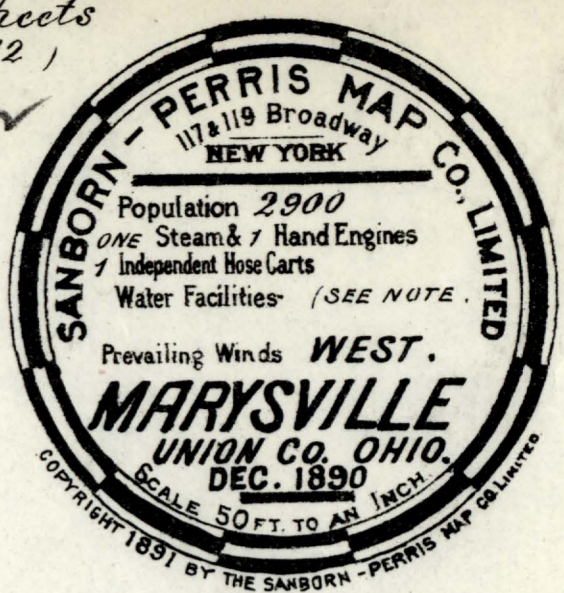


# INDEX.

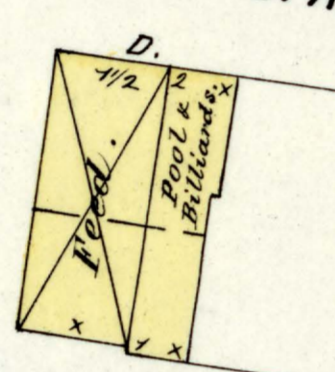
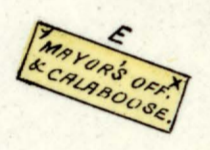
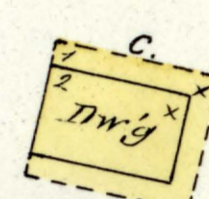
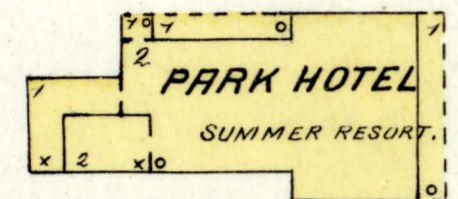
SPECIALS.	NO.	NAME	NO.	NAME
B	3	Marysville Bank Brewery (formerly)	3	Perfect, C. D., & Sons, Flour Mills
B	2	Bell, L. E., Carriage Shop	1	Presbyterian Church
C	3	Cherry, S. A., Saw Mill	2	Public Schools
C	2	City Carriage Works	3	Robinson, Curry & Co., Lumber Yard
C	2	" Hall	3	Rogers, J. Z., Machine Shop
C	3	Congregational Church	1	Thomas & Co., Poultry & Eggs
C	3	Conrad & Lentz, Tub Factory	3	Turner, A. S., Carriage Works
C	3	Continental Hotel	2	Union Block
C	2	County Court House	2	County Court House
C	1	" Infirmary	1	" Infirmary
E	3	Edwards, D., & Co., Broom Fact.	3	Vonderau & Woodruff, Elevator
F	3	Fleck & Chapman, Planing Mill	2	Wood, H., & Co., Cabinet Shop
H	2	Hotel Arlington	3	" W., Judge Estate
I	3	Isaac Half Lounge Co.	3	
M	1	Magnetic Springs	3	



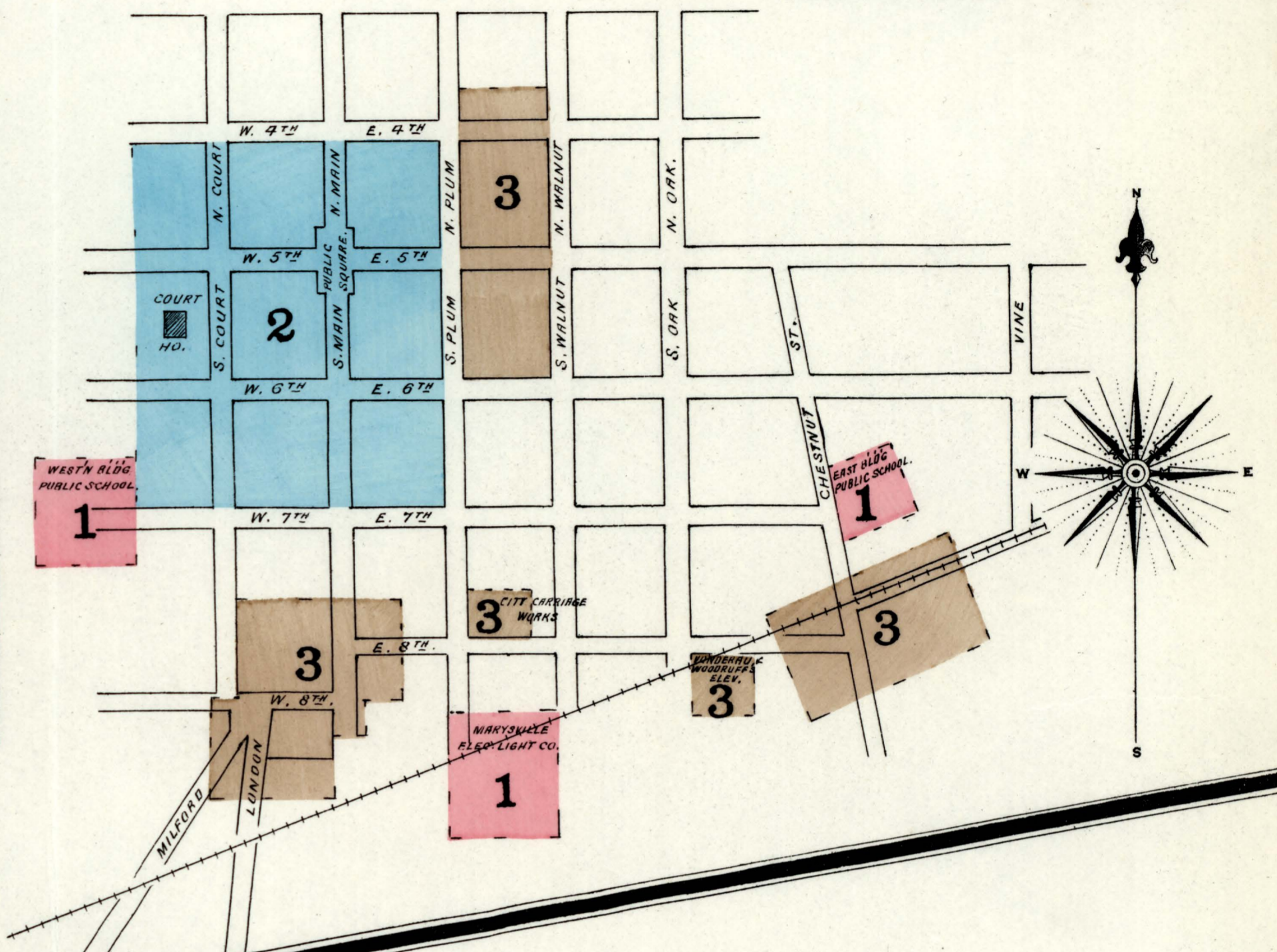
## NOTE.

**WATER FACILITIES.** 30 PUBLIC CISTERNS AT PRESENT. WATER WORKS TO BE IN OPERATION DEC. 15<sup>th</sup> 1890. HULLY SYSTEM 2 PUMPS COMBINED CAP. 250,000 GALS. 6 3/4 MILES OF MAINS 4" TO 12". 70 DOUBLE VALVES. WATER PUMPED FROM 5 WELLS. DOMESTIC PRESSURE 40 LBS. FIRE DEPARTMENT. 1 3/2 CLASS FIREMEN AND 1 HAND ENG. 1 HOSE WAGON. 12 WHEEL REEL. 1000' GOUD COTTON HOSE. 1 HAND HOOK & LADDER TRUCK. 2 HAND BARBOCK EXTINGUISHERS. 1 SIAMISE COUPLER. 2 HORSES. SWINGING HARNESS. 2 PAID MEN. 3 SEMI MEN.

LIGHTS: OIL & ELECTRIC.

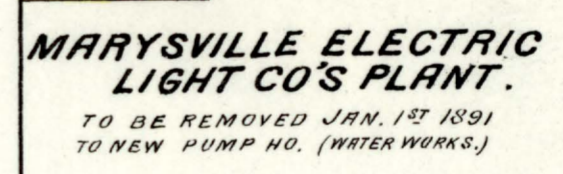
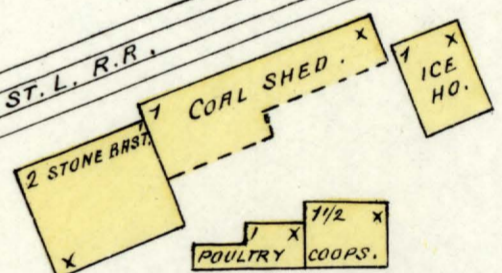
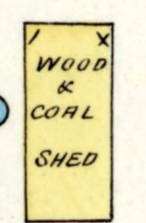
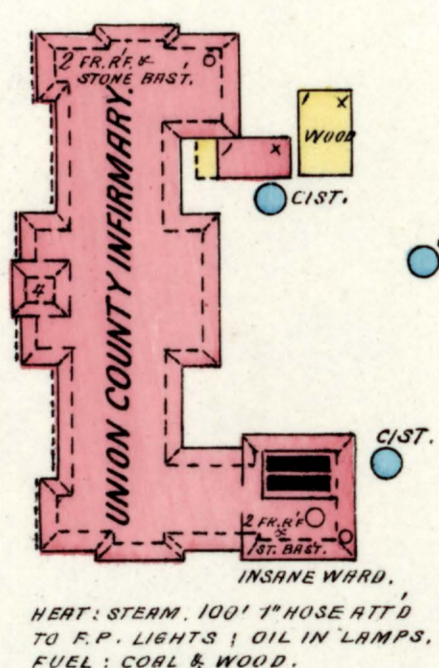


KEY	DESCRIPTION
5/16" WIDE LINE	FINE WALL 6 IN. AB. ROOF
3/16" WIDE LINE	COMMON WALL
1/16" WIDE LINE	CONCRETE WALL
1/8" WIDE LINE	FRAME PARTITION
DASHED LINE	OPENING & IRON DOOR
WAVE LINE	WINDOWS & SHUTTERS
DOTTED LINE	STABLE
SOLID LINE	WINDOW IN 1 <sup>ST</sup> STORY
1" & 3/4" WIDE LINE	" " " " " " " "
2" & 4" WIDE LINE	" " " " " " " "
RED	BUILDINGS COLORED YELLOW ARE FRAME
BLUE	" " " " " " " "
GREEN	" " " " " " " "
BROWN	" " " " " " " "
ORANGE	" " " " " " " "
PINK	" " " " " " " "
PURPLE	" " " " " " " "
BLACK	" " " " " " " "
GRAY	" " " " " " " "
WHITE	" " " " " " " "
CIRCLE	INDICATE RELATIVE HEIGHTS
SQUARE	MARKED @ ARE CLOTH LINED
DIAGONAL LINE	INDICATE RELATIVE HEIGHTS
DOTTED LINE	ALTERNATE STREET NOS ARE ACTUAL
SOLID LINE	CONSECUTIVE " " " "
BROKEN LINE NEAR BLDG	WOOD CORNICE
SOLID LINE	" " " METAL " "

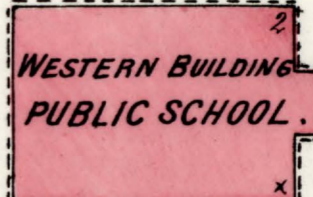
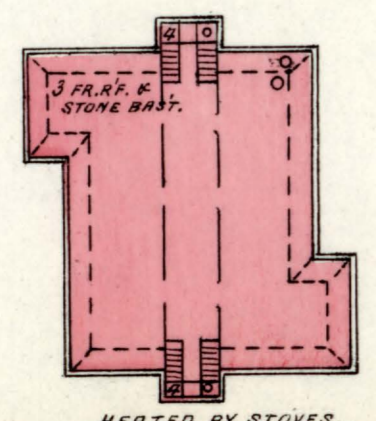


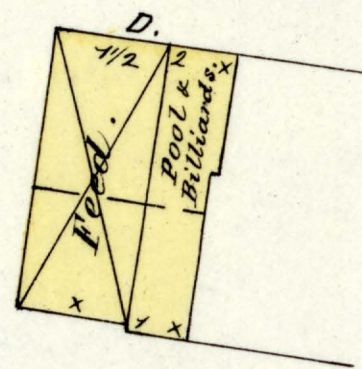
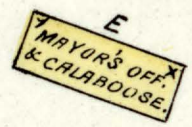
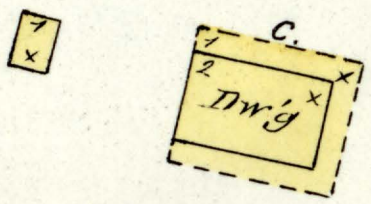
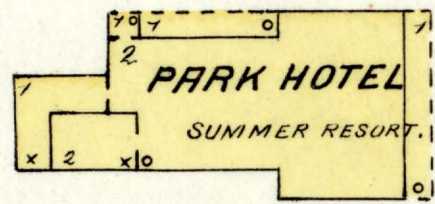
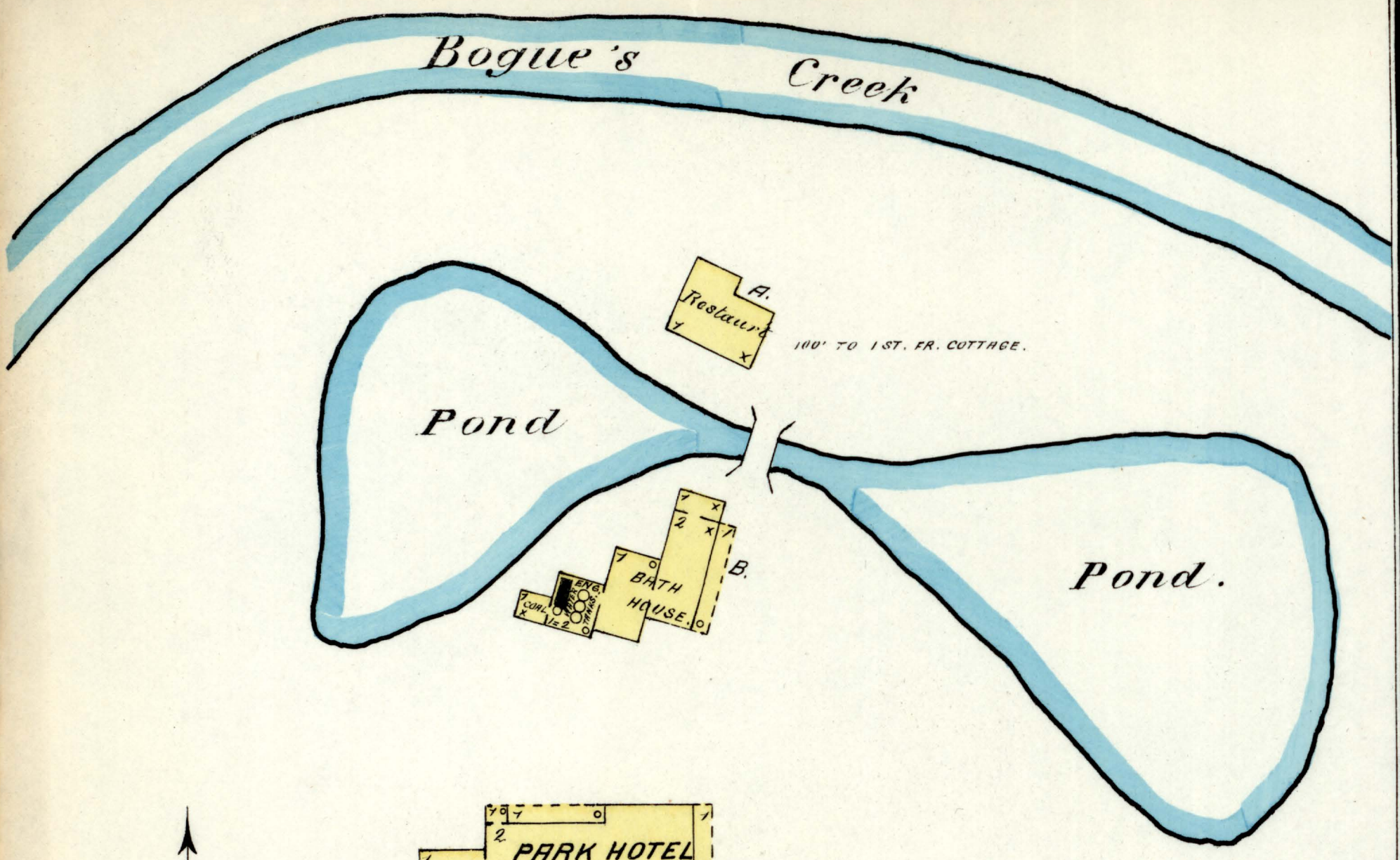
**MAGNETIC SPRINGS.**  
SUMMER RESORT.  
SITUATED 11 MILES N. OF MARYSVILLE OHIO.

SITUATED 2 MILES N. OF MARYSVILLE.



**EAST BUILDING PUBLIC SCHOOL.**





STREET

KEY	
3	FIRE WALL 6 IN. AB. ROOF
SHINGLE ROOF	" " 12" " "
COMPOSITE ROOF	" " 18" " "
SLATE OR TILE ROOF	FRAME PARTITION
STEAM BOILER	OPENING & IRON DOOR
	WINDOWS " SHUTTERS
	STABLE
	WINDOW IN 1 <sup>ST</sup> STORY
	" 1 <sup>ST</sup> & 2 <sup>ND</sup> "
	" 2 <sup>ND</sup> & 4 <sup>TH</sup> "
B'LD'GS COLORED YELLOW ARE FRAME	
"	RED " BRICK
"	BLUE " STONE
"	GREY " IRON
"	BROWN " ADOBE
"	GREEN " SPECIALS
MARKED (2) ARE CLOTH LINED	
(5) (19) INDICATE RELATIVE HEIGHTS	
ALTERNATE STREET NO'S ARE ACTUAL	
CONSECUTIVE " " ARBITRARY	
BROKEN LINE NEAR B'LD'G - WOOD CORNICE	
SOLID " " METAL "	

**MAGNETIC SPRINGS .**  
**SUMMER RESORT .**  
 SITUATED 11 MILES N. OF MARYSVILLE OHIO .