

**YORK TP.
UNION COUNTY
1910**

YORK

1910

**YORK TP.
UNION COUNTY
1910**

UNION

To

ITEMIZED S
I

- 10 day of
- 17 day of
- 18 day of
- 20 day of
- 24 day of
- 28 day of
- 29 day of
- 31 day of
- 1 day of
- 7 day of
- 8 day of
- 10 day of
- 11 day of
- 12 day of
- 21 day of
- 22 day of
- 23 day of
- 27 day of
- 29 day of
- 28 day of
- 7 day of
- 8 day of
- 9 day of
- 10 day of
- 11 day of
- 15 day of
- 16 day of
- 18 day of
- 24 day of
- 25 day of
- 29 day of
- 30 day of
- 31 day of
- 11 day of
- 5 day of
- 6 day of
- 7 day of
- 11 day of
- 14 day of
- 19 day of
- 22 day of
- 25 day of
- 28 day of
- 27 day of
- 19 day of
- 26 day of
- 27 day of
- 23 day of
- 28 day of
- 31 day of

APPRAISER'S ACCOUNT.

UNION COUNTY

To *O L Murphy* Land Appraiser of *York Township* Dr.

ITEMIZED STATEMENT OF DAYS ACTUALLY EMPLOYED IN MAKING SAID APPRAISEMENT.	
10 day of <i>Jan</i>	4 day of <i>June</i>
17 day of "	4 day of "
19 day of "	4 day of "
20 day of "	6 day of "
24 day of "	9 day of "
28 day of "	10 day of "
29 day of "	13 day of "
31 day of "	14 day of "
1 day of <i>Feb</i>	15 day of "
7 day of "	16 day of "
8 day of "	18 day of "
10 day of "	20 day of "
11 day of "	21 day of "
12 day of "	22 day of "
22 day of "	23 day of "
22 day of "	24 day of "
23 day of "	27 day of "
27 day of "	28 day of "
28 day of "	29 day of "
28 day of "	2 nd day of <i>July</i>
7 day of <i>March</i>	day of "
8 day of "	day of "
9 day of "	day of "
10 day of "	day of "
11 day of "	day of "
15 day of "	day of "
16 day of "	day of "
18 day of "	day of "
24 day of "	day of "
25 day of "	day of "
29 day of "	day of "
30 day of "	day of "
31 day of "	day of "
1 day of <i>April</i>	day of "
5 day of "	day of "
6 day of "	day of "
7 day of "	day of "
11 day of "	day of "
14 day of "	day of "
19 day of "	day of "
22 day of "	day of "
25 day of "	day of "
28 day of "	day of "
29 day of "	day of "
19 day of <i>May</i>	day of "
20 day of "	day of "
21 day of "	day of "
23 day of "	day of "
28 day of "	day of "
31 day of "	day of "

For services rendered in appraising the Real Estate of said *Township*, for the year 1910, occupying *70* days, between the *10* day of *January*, and the *10th* day of *July*, at \$*3.50* per day, \$*245⁰⁰*.

And the said *O L Murphy* being duly sworn, solemnly declares that the number of days herein stated, were necessarily occupied in the appraisement of said *Township*, and that this account is in all respects just and true.

(Signed) *O L Murphy* Appraiser.

Sworn to and subscribed before me, this *7th* day of *July*, 1910.

(Signed) *Henry Deary* Deputy Auditor of said County.

The above account is hereby approved this *5th* day of *July*, 1910.

L. W. Cline
E. J. Jones
A. L. Walth } Commissioners,
Union County,
Ohio.

Received *July 9th*, 1910, of the Auditor of Union County, an order on the Treasurer of said County, for *Two Hundred Forty Five* Dollars and _____ Cents, in full of the above account.

(Signed) *O L Murphy* Appraiser.

\$ *245⁰⁰*

STATEMENT OF SURVEYS.

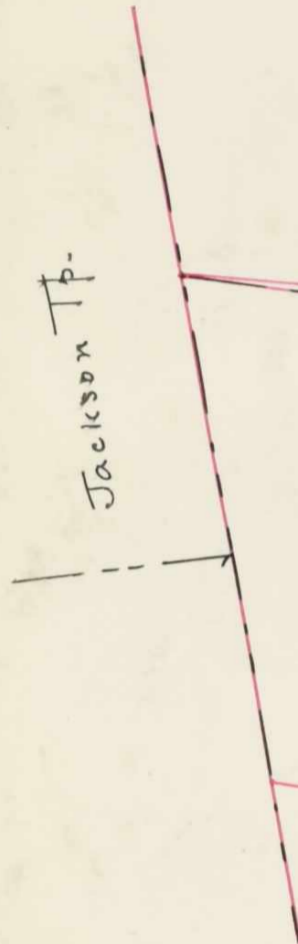
No. OF ORIGINAL SURVEY	Original Quantity	ORIGINAL PROPRIETORS	WATER COURSE	PAGE
2832	1000	Peter Manifold	Bokes Creek	2
2982	1000	Andrew Tarborn.	Bokes Creek	2
2984	1000	John M. Gregory.	Bokes Creek	4
3234	1000	George Barley ^{and} Joseph Meryman	Bokes Creek	6
3235	1000	Barley ^{and} Meryman	Bokes Creek	4
3236	1000	Barley ^{and} Meryman	Bokes Creek	3
3237	1000	Barley ^{and} Meryman	Bokes Creek	9
3238	1000	Barley ^{and} Meryman	Bokes Creek	8
3239	1000	Barley ^{and} Meryman	Bokes Creek	5
3468	889	John Bown	Bokes Creek	10
3469	889	John Bown	Bokes Creek	10
3470	888 ² / ₃	John Bown	Bokes Creek	10
5092	1333 ¹ / ₃	Robert Means	Mill Creek	2
5289	1000	Thomas Bowyer	Bokes Creek	6
5290	1000	Thomas Bowyer.	Bokes Creek	3 & 7
5387	1000	Robert Means.	Mill ^{and} Bokes Creeks.	8
6154	1700	Robert Means.	Mill ^{and} Bokes Creeks	2 & 3
6155 ^{and} 775	1059	Thomas Chilton (Heirs)	Mill Creek.	2
6492	70	Robert Means.	Fulton Creek	6
6680	648	Burgess Ball (Reps)	Mill ^{and} Bokes Creeks.	5
11346	1200	Allen Latham	Fulton ^{and} Bokes Creeks	11 & 12
12124	904 ² / ₃	Stephenson ^{and} Holt.	Mill Creek.	9
12542	789	Joseph Miller	Fulton Creek.	11
13506	500	David Williams	Bokes Creek	9
15707	38.	Allen Latham	Fulton Creek.	9

No. OF ORIGINAL SURVEY

STATEMENT OF SURVEYS.

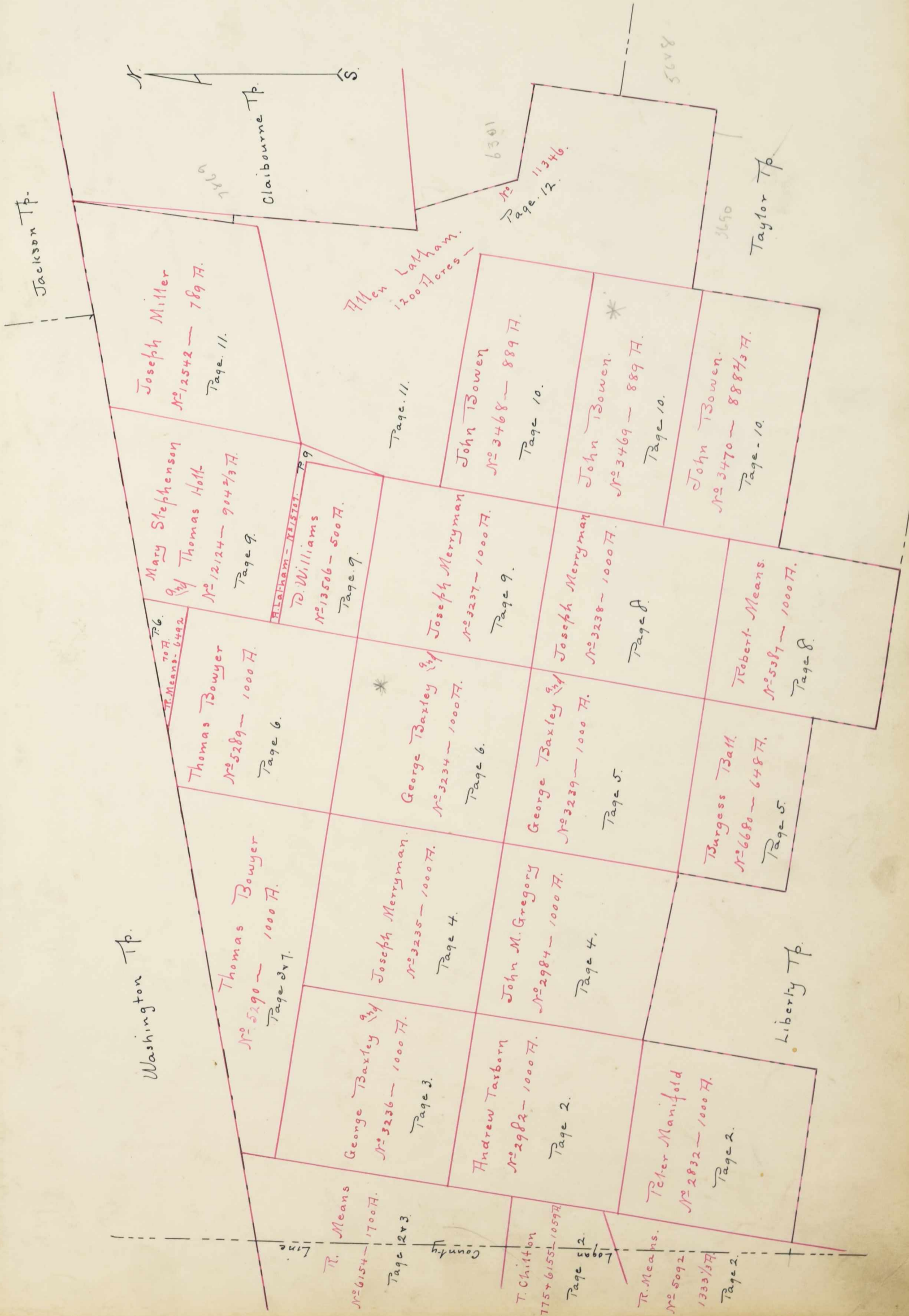
PAGE	No. OF ORIGINAL SURVEY	Original Quantity	ORIGINAL PROPRIETORS	WATER COURSE	PAGE
2					
2					
4					
6					
4					
3					
9					
8					
5					
10					
10					
10					
2					
6					
347					
8					
203					
2					
6					
5					
114 12					
9					
11					
9					
9					

Jackson Tp.



SURVEY No.

SCALE, 80 POLES TO AN INCH.



99-204

Elmer G. ...
(H.P. 92)
R.M.

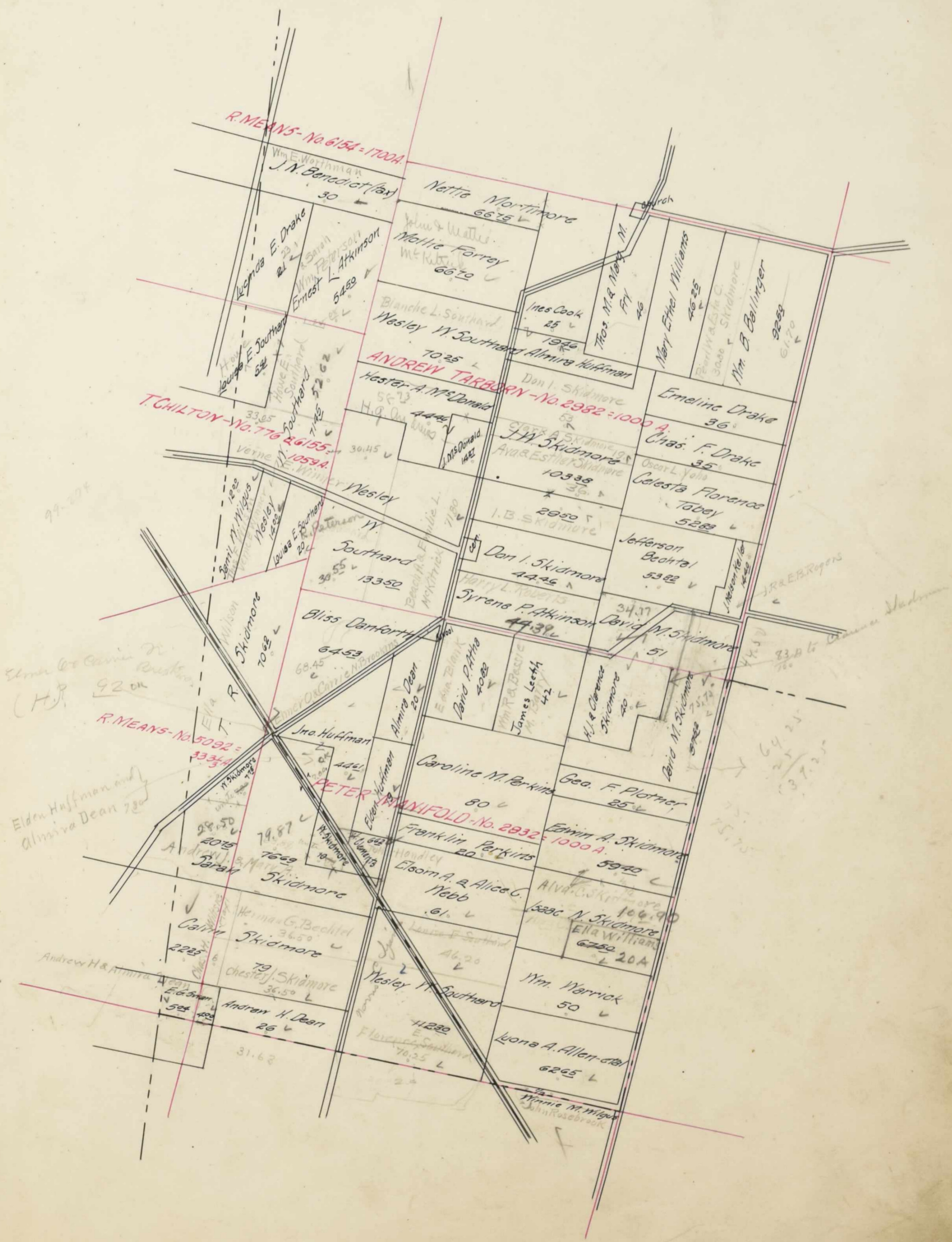
Elden Huffman
Almira Dean

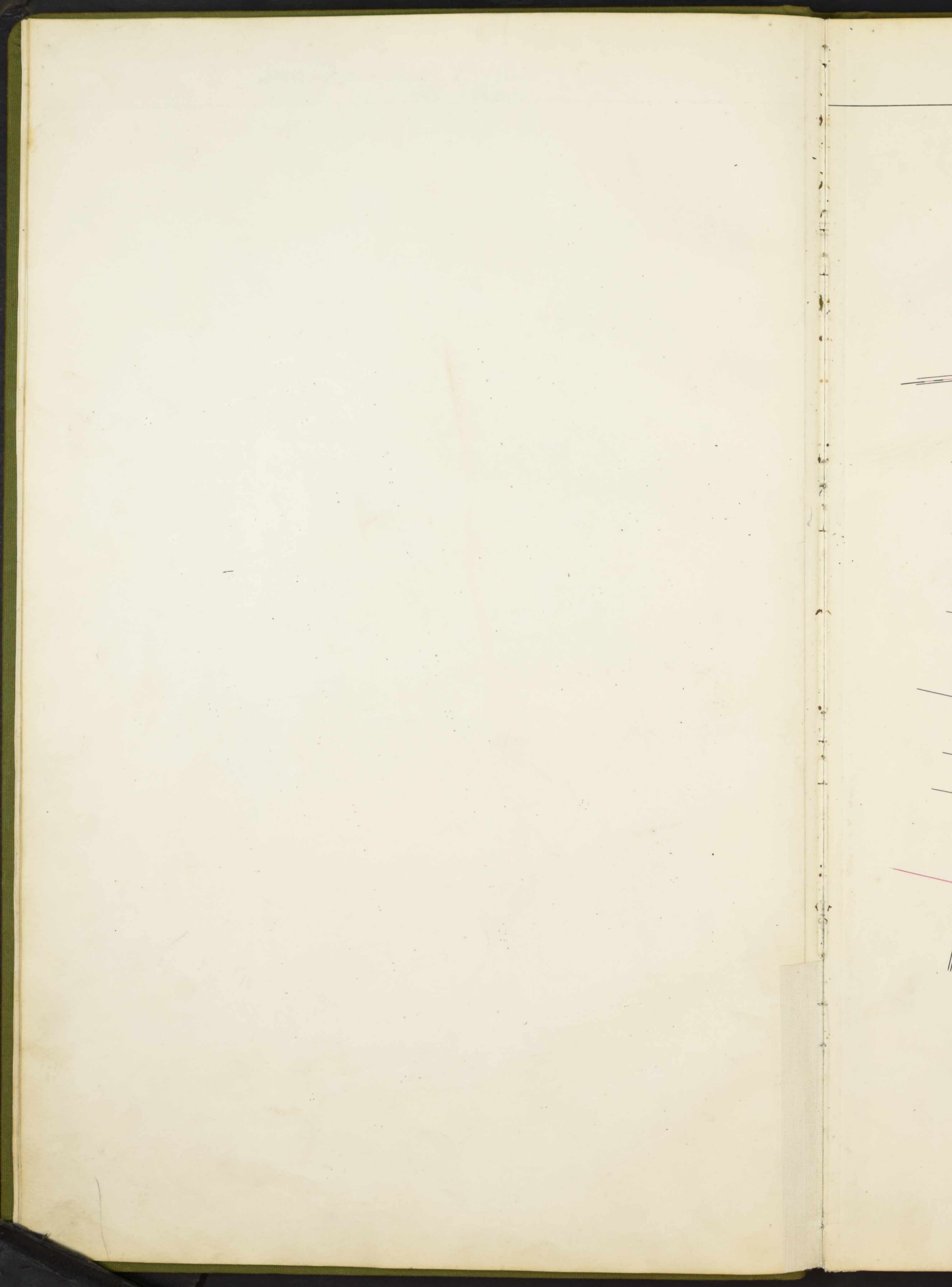
Andrew H. ...

SURVEY No. 6154-2982-7764c.

5092-2932

SCALE, 80 POLES TO AN INCH.





SURVEY No. 5290-3236-6154.

SCALE, 80 POLES TO AN INCH.



3772
1225
5000



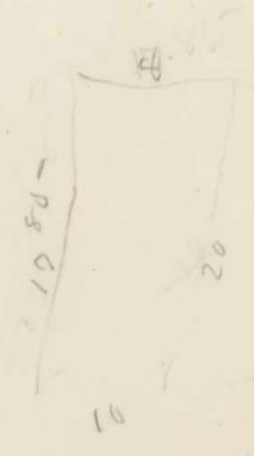
2853
 23
 2857

SCALE, 80 POLES TO AN INCH.

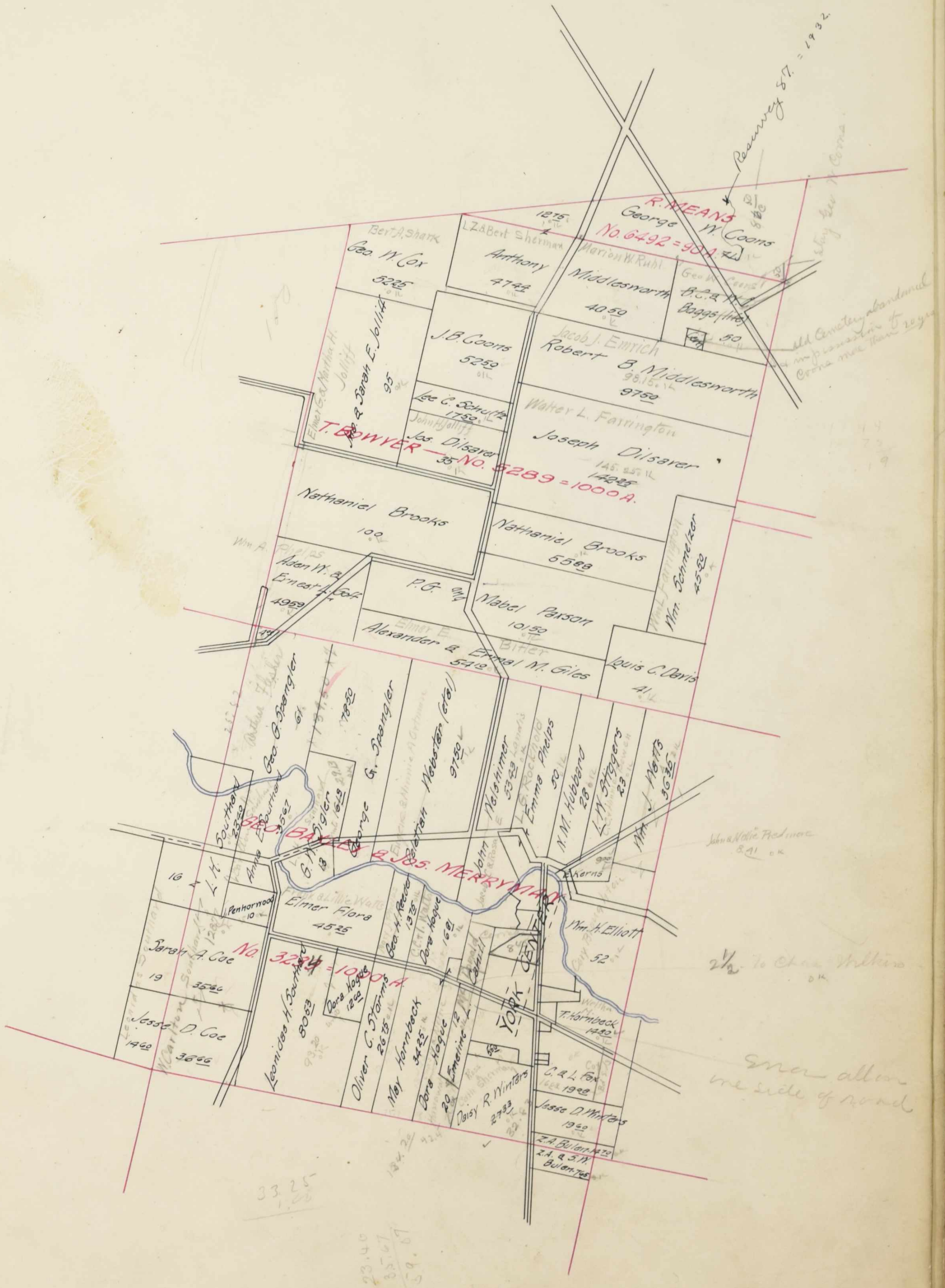


67.32
12.
55.32
20
35.32
34.25
1.07

50.52
54.25
4.73



SCALE, 80 POLES TO AN INCH.



Lawrence G.
Jas. Elliott
L-1 10732
60 1/2



SURVEY No. 3238-5387.

SCALE, 80 POLES TO AN INCH.



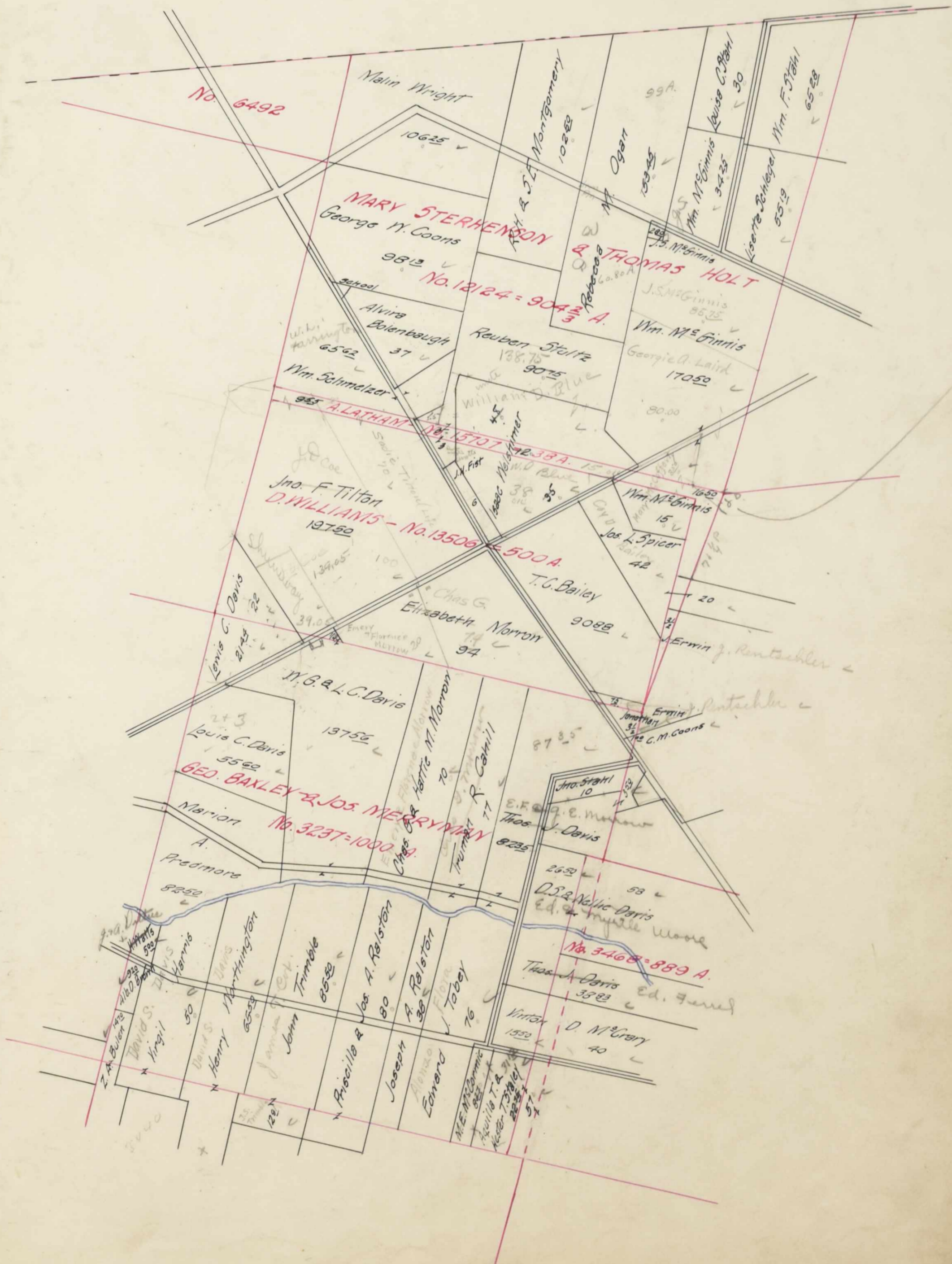
Taylor Sch. Dist.



SURVEY No.

12124-15707-13506-3237.

SCALE, 80 POLES TO AN INCH.



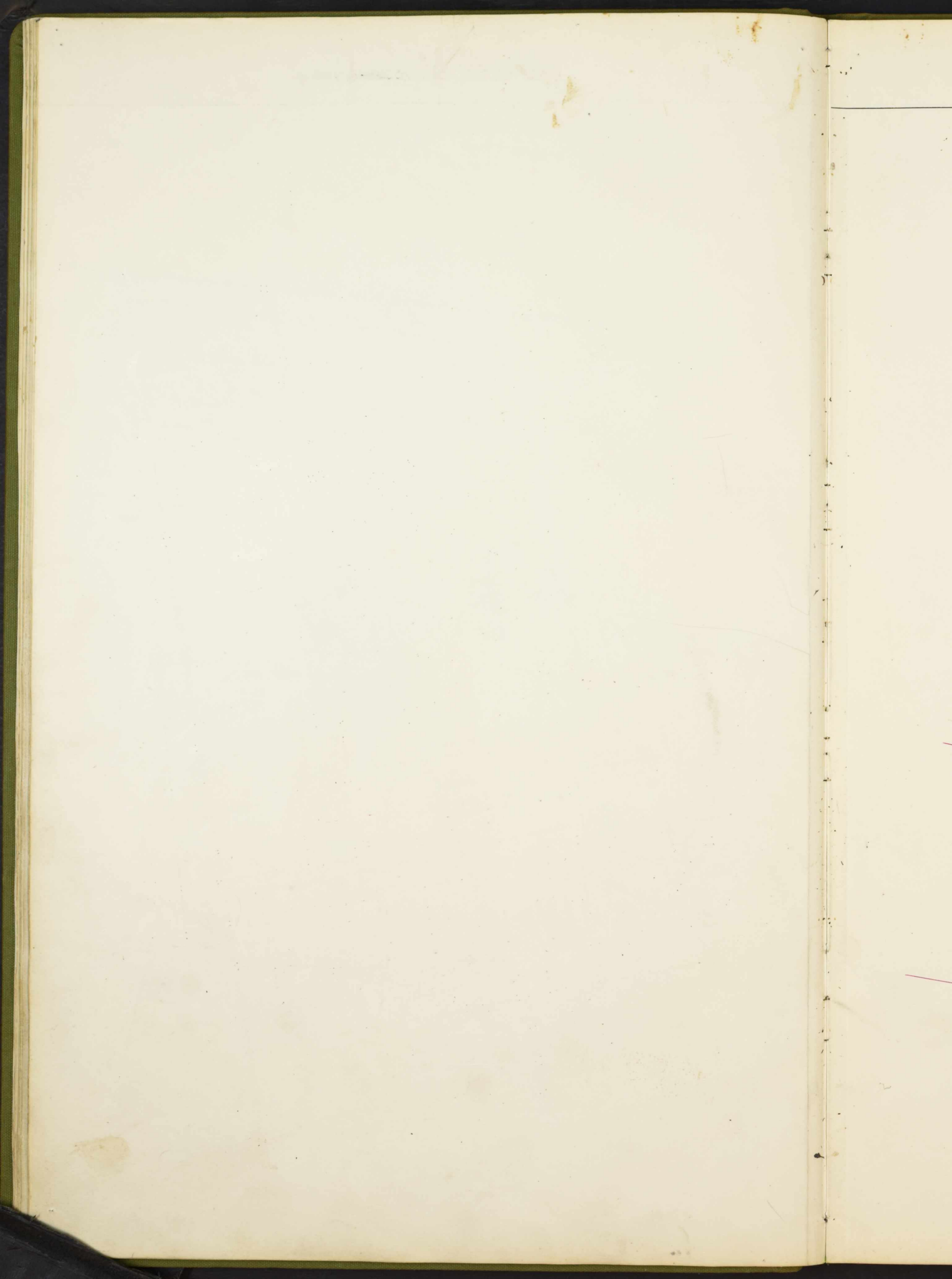
24 10
275 1
101

22 10

244
99.2
144

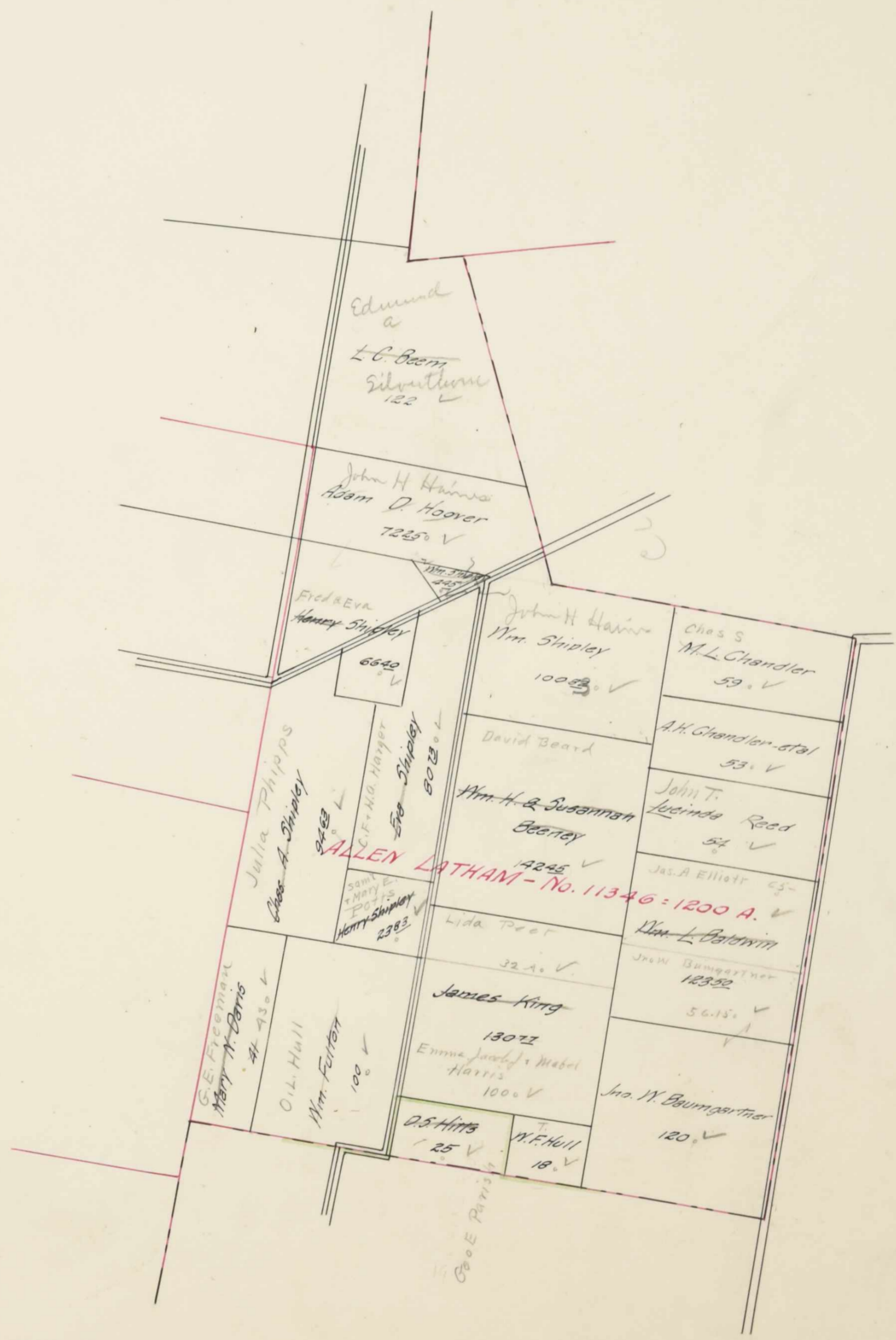
Rents

Money



SURVEY No. 11346

SCALE, 80 POLES TO AN INCH.

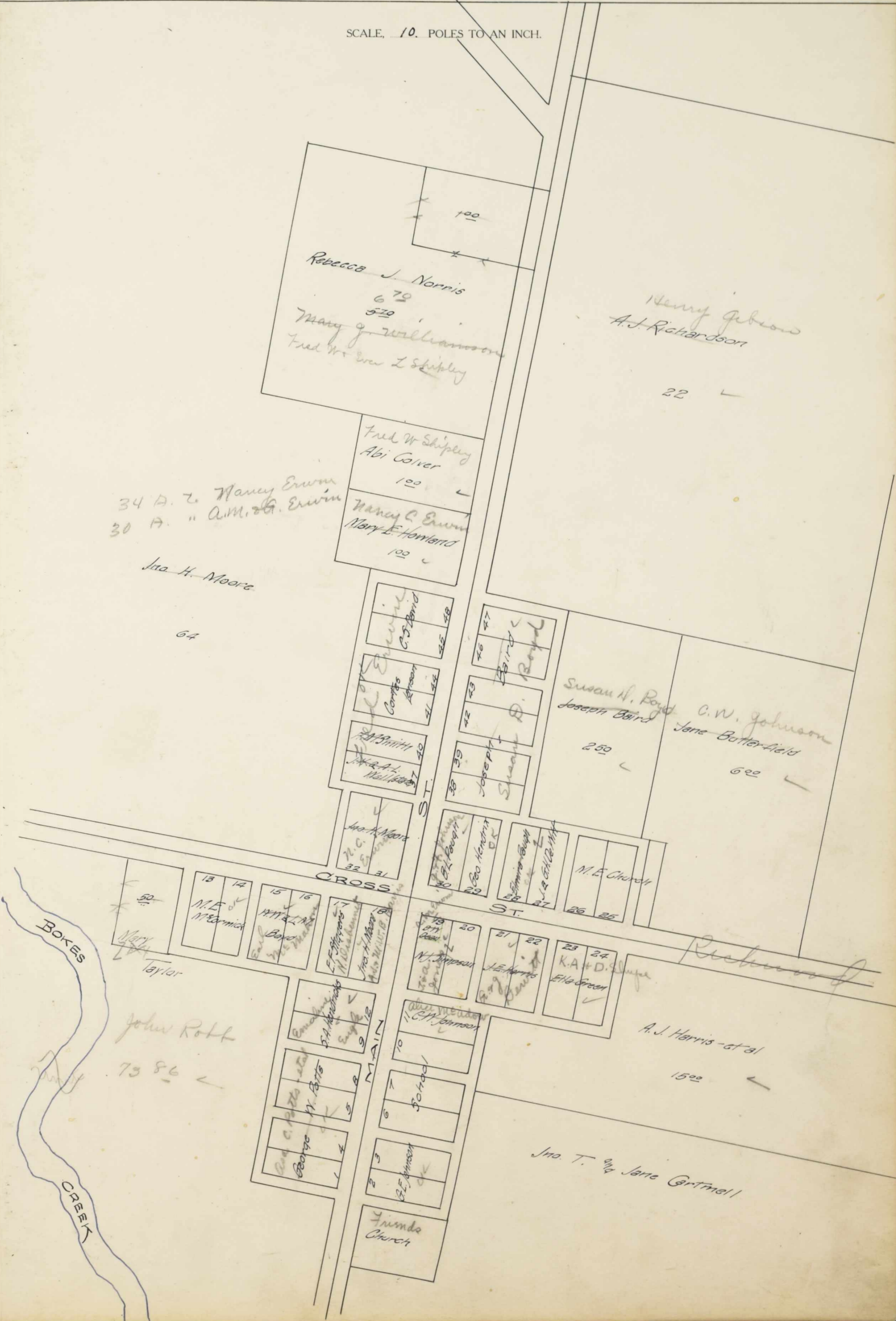


Taylor Sch. Dist.



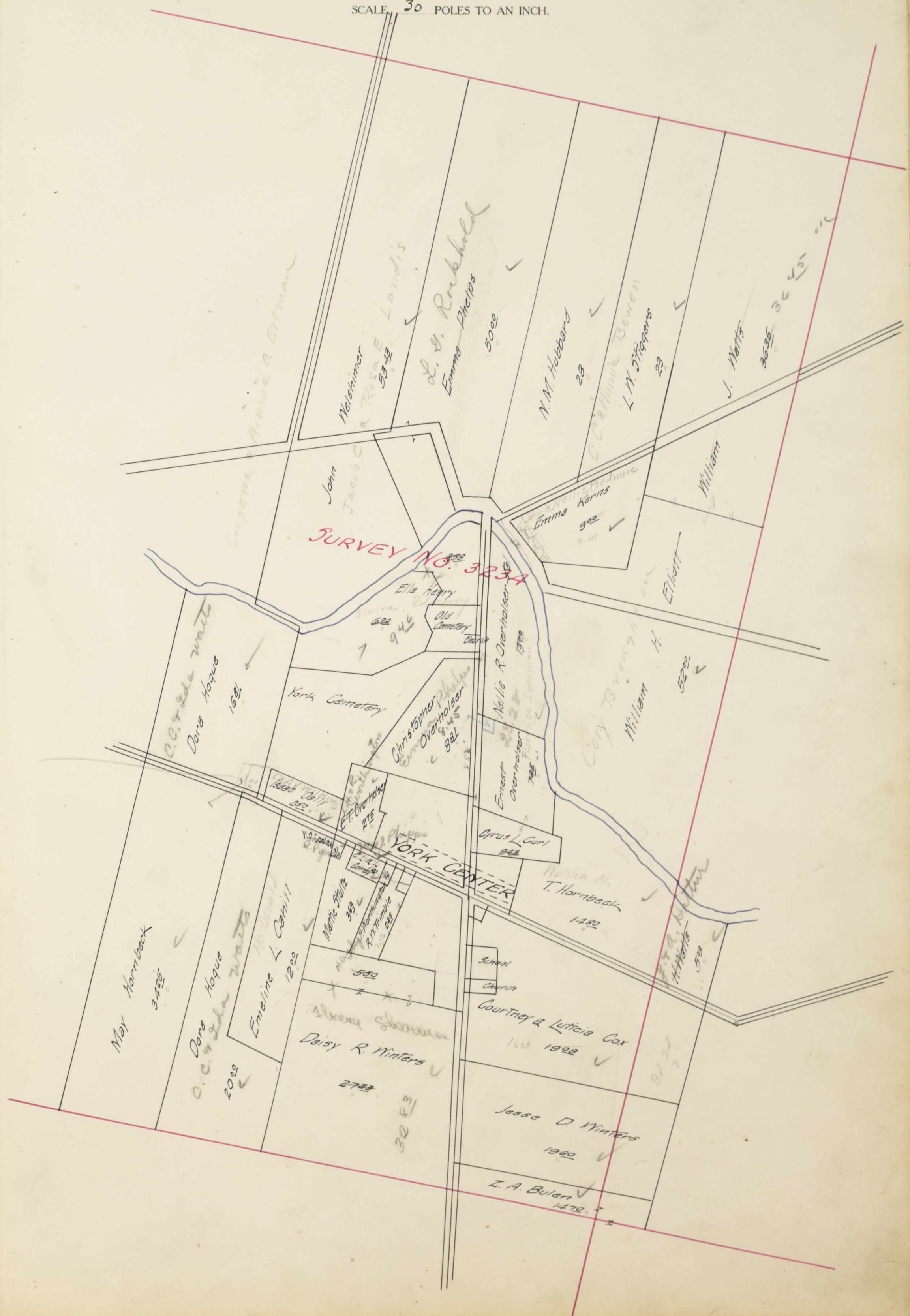
TOWN OF Somerville

SCALE, 10. POLES TO AN INCH.



TOWN OF York Center

SCALE 30 POLES TO AN INCH.



Assessment of Real Property in *York* Township,

IN WHOSE NAME ASSESSED	No. of Entry	No. ACRES LAND CLASSIFIED						TOTAL ACRES		Value per Acre Excluding Buildings		VALUE OF ALL BUILDINGS					Total Value Lands and Buildings	Changed by County Board of Equalization	
		Arable and Plow Land		Meadow and Pasture Land		Uncultivated and Wood Land		Acres	H.	Dollars	Cts.	Dollars	Dollars	Dollars	Dollars	Dollars		Add	Deduct
		Acres	H.	Acres	H.	Acres	H.										Dollars		
Allen Luma A et al.	2832	10		39		13	65	62	65	40		2500		2500	250				
Andrew Oscar Mc Orm M.	3224					38				38	50	30	400	100	330				
Same				13						12	50	10	100		110				
Fitch David P.	2832	20		8		12	80	40	80	42		1710	350		2060				
Fitch Frank M.	5290	28		20		3		51		40		2040		200	2240	150			
Fleming Earnest L.	6154	39				13	30	54	50	37		2000	230		2230	120			
Fleming Sydney P.	2982	30				14		44		40		1760	100		1860				
Boyd Joseph (Dup. Paid)	2468	250						250		42		110			110	10			
Bailey L. C.	13506	55				36	88	90	88	42		3810	350	150	4410	420			
Baker Laura Belle.	11346	21				4	13	25	13	36		900			900	100			
Baker Leticia M. (Same)		15		5		5	12	25	12	36		900			900	100			
Baker Wm.		15		16				31	50	35		1100	150		1250				
Baldwin Wm L.		105		15		3	30	123	50	40		4940		300	5240	580			
Ballingier Andrew S.	3236	38		10		15		63		37		2330	400	150	2880	260			
Ballingier Callet E.		27				21	60	48	60	44		2140	380	200	2690	140			
Ballingier Sarah E.	6154	26		2		24	30	50	50	42		2120	600	100	2820	130			
Ballingier Wm B.	2982	59		15		18	50	92	50	41		3790	300	100	4190	410			
Bargdull W. C.	5290	40		10		75		50	75	45		2280	350	150	2780	250			
Barnett Rye S.	11346	55				15		70		38		2660	150	150	2960	240			
Baumgardner John M.		85		15		20		120		45		5400	300	250	5950	540			
Baumgartner Isaac	12542	40		14		50		54	50	42		2290	100	150	2540	150			
Same	11346					20	30	20	50	30		610			610	70			
Bechtel Jefferson.	2982	33	82	10		10		53	82	42		2260	300	150	2710	250			
Bechtel John W.	3236	30				33		62	00	36		2270	500		2770	250			
Beun L. C.	11346	77		20		25		122		42		3720		450	6370	560			
Beun Wm H. & Susannah.		85		15		42	45	142	45	38		6410	400	200	7010	700			
Benedict Henry C.	5154	35				15		50		44		2200	350	200	2750	240			
Benedict Jeremiah W. (Tax)		10				20		30		44		1320		100	1420	150			
Bowler O. F. & Ella.	3238	70		4		16		90		38		3420	150	250	3820	380			
Blaine Chas. E.	12542	22		13		14		49		42		2050	350	150	2550	220			
Same		34				6		40		42		1680			1680	180			
Boggs Birdella J. & Walter C. (H. P.)	5289	35		10		5		50		40		2000	150		2150	120			
Boltonbaugh Alvin	12124	27		10				37		42		1350	350		1900	170			
Borzart L. W.	3239	23	67	10				33	67	40		1340	250	200	1790	150			
Same	6680	18	60					18	60	40		740			740	80			
Bright Milton E. & Carrie	3235	80		10		20	68	110	68	38		4200	150		4350	460			

1291 59 271 25 449 91 2012 65 820 10 7200 150 3650 93010 9080 4980

Union County, Ohio, for the Year 1910.

Total Value as Equalized by County Board	Deduct Value Roads	Balance	Changed by State Board	Total Dup. Value as Equalized	Plat Page	TRANSFERRED TO	DATE TRANSFERRED	DUP. OF WHAT YEAR					REMARKS	
								'09	'10	'11	'12	'13		
Dollars	Acres	Dollars	Dollars	Dollars				Page	Page	Page	Page	Page		
2780	3/4	30	2750	1100	5850	2								
530			530	210	240	20	Jared & Army Moffett.	7/10			205			11/10 by County Board
110			110	40	150	20	Jared & Army Moffett.	7/10			205			40% State
2230	1 1/2	60	2180	850	3070	2								
2440	1/2	20	2470	990	3460	3-7								
2480			2480	990	3470	3								
2050	1 1/2	70	1980	500	2780	2								
120			120	50	170	17								
4832	1 1/4	50	4780	970	6690	9								
1000	1/4	10	990	400	1390	11-12	J. H. Millson	4/10			205			
1000	1/4	10	990	400	1390	11-12	J. H. Millson	4/10			193			
1370	1/2	20	1350	540	1890	11-12								
5820	1	40	5780	2810	8090	11-12	J. M. Baumgartner (50 1/2 A)	4/10			193			
3140	1 1/4	50	3090	1240	4330	3	J. A. Ellrod 65 1/2	4/10			198			
2930	2/3	30	2900	1160	4060	3								
3050	1/2	20	3030	1210	4240	3								
4600	1 1/4	50	4550	1820	6370	2	30 1/2 J. Thos. W. Ballinger	7/10			193			
3030	1 1/2	60	2970	1190	4160	3								
3250	1/2	20	3230	1290	4520	3-7								
6540			6490	2600	9090	11-12								
2790	1/4	50	2780	1110	3890	11-12								
700			700	280	980	11								
2960	1/4	10	2950	1180	4130	2								
3020	3/8	30	2990	1200	4190	3								
6430	1 1/4	50	6400	1430	8510	11-12								
7710			7710	3050	10790	11-12	Louis L. Beun.	7/10			193			
2940	3/4	30	2960	1180	4140	3	Dand Beard.	4/10			205			
1570	3/8	20	1550	620	2170	3	Wm E. Prachtman	2/10			205			
4200	3/4	30	4170	1670	5840	8								
2760	1/3	50	2730	1090	3820	11								
1860	1 1/4	50	1810	720	2530	11								
2370	2 1/2	100	2270	910	3180	6								
2070	3/4	30	2040	820	2860	9								
1940	1/4	10	1930	770	2700	5								
820	1	40	780	310	1090	5								
4810	3/4	30	4780	1910	6690	4								

102290 10,020 4040 141,420 25%

Corrected to Sep 20, 1911.
11/10 by County Board
40% State

IN WHOSE NAME ASSESSED	No. of Entry	No. ACRES LAND CLASSIFIED						VALUE OF ALL BUILDINGS					Total Value Land and Buildings	Changed by County Board of Equalization	Total Value as Equalized by County Board	Deduct Value Roads	Balance	Changed by State Board	Total Dup. Value as Equalized	Plat Page	TRANSFERRED TO	DATE TRANSFERRED	DUP. OF WHAT YEAR					REMARKS									
		Arable and Plow Land		Meadow and Pasture Land		Uncultivated and Wood Land		TOTAL ACRES	Value per Acre Excluding Buildings		House	House											Mills	Barns and other Build'gs	'09	'10	'11		'12	'13							
		Acres	H.	Acres	H.	Acres	H.		Acres	H.																					Dolls.	Cts.	Dollars	Dollars	Dollars	Dollars	Dollars
Davis Minnie & Elbert C.	3238	44		6	75			50	75	37			1870	150			100	2120	210	2330	3/4	30	2300	920	3220	8	✓										
Same	"			2	80			2	80	37			90					90	10	110			110	40	150	3	✓										
Davis Narcisca	3234					20		20	50				10	100				110	10	110			110	40	150	3	✓	Ellen Moore et al.	1/11		217						
Davis Lora J.	3237	44		32	6	35		82	35	38			3130	350			200	3630	350	4020	2 1/2	90	3930	1570	5500	9	✓										
Same	11246			3	50			3	50	38			130					130	10	140			140	60	200	11-12	✓										
Same	2237	20		18	83			38	83	38			1470				200	1670	150	1850	1/4	10	1840	740	2580	9	✓										
Davis Mrs. Dora B.	6680	40		18	14	65		72	65	42			3170	250			150	3370	340	3740	1 1/2	60	3730	1440	5220	5	✓										
Davis W. G. & L. C.	3237	8		89	40	36		137	56	42			5780	350	350		300	6780	640	7420	1 3/4	70	7350	2940	10290	9	✓										
Same	13506			25				25	40				10					10	00	10			10	00	10	9	✓										
Dean Abner A.	2832	20					20	40					800					800	90	890	1	40	850	340	1190	2	✓										
Dean Andrew H.	"	10			16		26	42					1090					1090	120	1210	1 1/4	50	1160	460	1620	2	✓										
Dunn Joseph.	3235	76		30	65		106	65	40				1260	250	200		150	1460	470	5330	1 3/4	70	5260	2100	7360	4	✓										
Duncan Joseph.	5289	122		5	15	25		142	25	43			6110	300			200	6610	670	7280	1	40	7240	2900	10140	6	✓										
Same	"	31		4		35		43					1510	150				1660	170	1830	1/2	20	1810	720	2530	6	✓										
Dunnett Geo W.	3470	12		5	90		17	90	36				640	150				790	70	860	1 1/2	40	830	330	1150	10	✓										
Dunnett Mary C.	5387	4		15			19	32					610	150				760	70	830	1/4	10	820	300	1150	8	✓										
Dittus Jeremiah & Angus D.	3238	39	40	8			47	40	34				1610	150			100	1960	180	2040	3/4	30	2010	860	2810	8	✓										
Dobbs Hyman D.	11246	39		10	95		49	95	42				2090	200			100	2390	230	2630	1 1/4	50	2580	1030	3610	11-12	✓										
Drake Abner F.	2987	5		3	10		8	10	40				320					320	40	360			360	170	500	4	✓										
Drake Charles F.	2982	20		15		35	40						1400	200			100	1700	150	1850	1/4	10	1840	740	2580	2	✓										
Drake Emeline.	2982	16		20		36	38						1370					1370	50	1520	1/4	10	1570	600	2110	2	✓										
Drake John T.	6154	41		41		20	50	42					4300	150	400		150	5400	470	5470	1	40	5430	2170	7600	3	✓										
Drake Lucinda E.	"	12		9		21	42						880					880	100	980			980	340	1370	3	✓										
Drake Rebecca.	2984	33		7	10		50	40					2000	450				2800	220	3020	1/2	20	3000	1200	4200	4	✓										
Elliott John.	6154	40		25	31		96	44					4220					4220	460	4680	3/4	30	4650	1860	6510	3	✓										
Elliott Joseph.	5290	40		8	12		60	42					2520	250			350	3120	340	3400	3/4	30	3370	1350	4720	3	✓										
Elliott J. B.	6154	9		10	25		19	25	42				800					800	90	890	1/2	20	870	350	1220	3	✓										
Elliott Joseph B.	"	25		25		50	42						2100					2100	230	2330	1/2	20	2310	920	3230	3	✓										
Elliott Mrs. H.	3234	22		20	10		52	36					1870	200				2070	210	2280			2240	900	3140	18	✓										
Evans Jonathan	13506			75			75	112					30					30	10	30			30	10	40	9	✓	E. E. Bollen	1/4/10		190						
Same	15707			3	50		3	50	42				150	250			200	600	70	620	1/2	20	600	240	840	9	✓	E. E. Bollen	1/4/10		190						
Same	3237			3	00		3	50	42				150					150	20	170			170	70	240	9	✓	E. E. Bollen	1/4/10		190						
Same	11246	28		37		4	75	69	75	42			2930					2930	20	3250			3250	1300	4550	11-12	✓	E. E. Bollen	1/4/10		190						
Evans Pierre O.	3234			11		11	50						10				350	360	70	360			360	140	500	6	✓			20							

800 40 396 98 26318 1460 50 59336 4050 950 350 2650 67330 6560 73870 73040 29140 102230

Assessment of Real Property in *York* Township,

IN WHOSE NAME ASSESSED	No. of Entry	No. ACRES LAND CLASSIFIED						VALUE OF ALL BUILDINGS					Total Value Land and Buildings	Changed by County Board of Equalization	
		Arable and Plow Land		Meadow and Pasture Land		Uncultivated and Wood Land		House	House	Mills	Barns and other Build'gs	Add		Deduct	
		Acres	H.	Acres	H.	Acres	H.	Dollars	Dollars	Dollars	Dollars				
Hubbard W. M.	3234	6		22		28	40	1120	350		150	1620	120		
Huffman Alvina	2982	7		12	46	19	46	740				740	80		
Huffman Elden	2832	10			9	19	40	760				760	80		
Huffman John		38		6	61	44	61	1780	350			2130	190		
Hull W. F.	11346	13		5		18	35	630				630	70		
Imkeup David H.	3238			4		4	40	160			200	360	40		
Same	3239	42		13	24	57	24	40	2290	200		2490	250		
Imkeup Della	3238			14	12	14	12	36	500			500	60		
Jackson Butler F.	3238	30		10		40	32	1280	150			1430	140		
January Nestit	5290	36		30	20	101	20	38	3840	200	300	4340	420		
January Nickliff & Rubin	"	44		50		98	38	3720	100			3820	410		
Johnson Elias Jr.	3469	25		20	30	45	50	38	1730			1730			
Same	"	12		3	72	17	72	33	620	150		770	70		
Jolliff Isabella	3239	40		16	73	56	75	38	2160	300	100	2460	240		
Jolliff John & Sarah E.	5289	85		10		95	40	3800	450		200	4450	420		
Jolliff John D.	5290	62		20	18	100	44	4000		300		4700	520		
Jolliff Martha (wife) et al.	3239	20		10		30	36	1080	150			1230	120		
Jones W. Key (Tax)	3234						107								
Keller J. Nelson	2984	30		13	33	43	33	43	1870			1870	210		
Same	2982			5	9	14	40	43	620	350		970	70		
Kenn Emma	3234	4		.5		9	40		360	100		460	40		
King James	11346	82		10	38	77	36	4710	300		100	5110	520		
Kinnear Geo. F.	3469	100		20	50	18	38	6460	150	150		6760	710		
Same et al.	"			80		80	38	20				20	00		
Kirkpatrick M. J.	3235	42		10	25	52	25	40	2080	150		2240	230		
Kopf P. Lodge	3234					.02	304		10			10	00		

732 185 37 293 05 1210 48 46750 3450 1500 51700 3200

Union County, Ohio, for the Year 1910.

Total Value as Equalized by County Board	Deduct Value Roads	Balance	Changed by State Board		Total Dup. Value as Equalized	Plat Page	TRANSFERRED TO	DATE TRANSFERRED	DUP. OF WHAT YEAR					REMARKS
			Added	Deduct					'09	'10	'11	'12	'13	
			Dollars	Dollars					Page	Page	Page	Page	Page	
1740	1800	1720	690		2410	18								
820		820	330		1150	2								
840	2320	810	320		1130	2								
700		700	250		950	1112								
400	2740	390	160		550	8								
560	1760	2680	1070		3750	9								
560		540	220		760	8								
1570		1540	620		2060	8								
4760		4690	1880		6570	3								
4230		4160	1660		5820	3								
1920	840	1910	760		2670	10	J. Johnson	12/16/09			199			
2800	840	830	340		1170	10	J. Johnson	12/16/09			199			
4870	2800	2770	1110		3880	5								
4870		4840	1440		6780	6								
5220	1350	5770	2070		7240	37								
1350		1340	540		1880	5								
2080	1040	2030	810		2840	4								
500		990	400		1390	2								
5630	500	480	190		670	18								
7470		5630	2250		7880	10	Frank Faridon	4/5/11			211			
		7470	2990		10460	10	J. L. Horn	4/16/10			211			
20		20	10		30	10	J. L. Horn	4/16/10			211			
2470		2470	990		3460	4	W. L. Stadden	4/16/10			211			
10		10	10		20	20								

56700 56290 22570 78840 610 153 610

York

IN WHOSE NAME ASSESSED	No. of Entry	No. ACRES LAND CLASSIFIED						TOTAL ACRES		Value per Acre Excluding Buildings		VALUE OF ALL BUILDINGS				Total Value Land and Buildings		Changed by County Board of Equalization		Total Value as Equalized by County Board	Deduct Value Roads	Balance	Changed by State Board		Total Dup. Value as Equalized	Plat Page	TRANSFERRED TO	DATE TRANSFERRED	DUP. OF WHAT YEAR					REMARKS					
		Arable and Plow Land		Meadow and Pasture Land		Uncultivated and Wood Land		Acres	H.	Dolls.	Cts.	Dollars	Dollars	Dollars	Dollars	Dollars	Add	Deduct	Dollars				Acres	Dolls.					Dollars	Added	Deduct	Dollars	'09		'10	'11	'12	'13	
		Acres	H.	Acres	H.	Acres	H.																																Dollars
<i>Albroad G. W. + Alice</i>	<i>3239</i>	<i>16</i>		<i>35</i>				<i>51</i>	<i>40</i>	<i>2040</i>		<i>330</i>		<i>2390</i>	<i>220</i>			<i>2610</i>	<i>3/4</i>	<i>30</i>	<i>2580</i>	<i>1030</i>	<i>3610</i>	<i>5</i>															
<i>Richardson A. J.</i>	<i>3468</i>	<i>18</i>		<i>11</i>				<i>22</i>	<i>42</i>	<i>920</i>		<i>300</i>		<i>1220</i>	<i>100</i>			<i>1320</i>	<i>1/2</i>	<i>20</i>	<i>1300</i>	<i>520</i>	<i>1820</i>	<i>17</i>															
<i>Roberts Alice S. R.</i>	<i>6680</i>	<i>18</i>	<i>73</i>					<i>18</i>	<i>75</i>	<i>780</i>		<i>100</i>		<i>880</i>	<i>90</i>			<i>970</i>	<i>1</i>	<i>40</i>	<i>950</i>	<i>370</i>	<i>1300</i>	<i>5</i>															
<i>Rogers Norton B.</i>	<i>2984</i>	<i>27</i>	<i>50</i>	<i>2</i>		<i>8</i>		<i>37</i>	<i>50</i>	<i>38</i>		<i>200</i>		<i>1430</i>	<i>200</i>			<i>1790</i>			<i>1790</i>	<i>720</i>	<i>2510</i>	<i>4</i>		<i>Daisy E. Sayre</i>	<i>12/14</i>				<i>203</i>								
<i>Rosebrook Mary F.</i>	<i>3238</i>	<i>3</i>		<i>2</i>				<i>5</i>	<i>36</i>	<i>180</i>		<i>150</i>		<i>330</i>	<i>20</i>			<i>350</i>	<i>1/4</i>	<i>10</i>	<i>340</i>	<i>140</i>	<i>480</i>	<i>8</i>															
<i>Sanderson James S.</i>	<i>3470</i>	<i>2</i>				<i>70</i>		<i>2</i>	<i>70</i>	<i>35</i>		<i>90</i>		<i>90</i>	<i>10</i>			<i>100</i>			<i>100</i>	<i>40</i>	<i>140</i>	<i>10</i>															
<i>Schlegel Rosette</i>	<i>12542</i>	<i>63</i>		<i>20</i>		<i>12</i>	<i>25</i>	<i>95</i>	<i>25</i>	<i>114</i>		<i>4190</i>	<i>1200</i>	<i>400</i>	<i>5790</i>	<i>460</i>		<i>6250</i>	<i>3</i>	<i>130</i>	<i>6120</i>	<i>2450</i>	<i>8570</i>	<i>11</i>															
<i>Same</i>	<i>"</i>			<i>18</i>				<i>18</i>	<i>42</i>	<i>760</i>		<i>760</i>		<i>760</i>	<i>80</i>			<i>840</i>	<i>1/4</i>	<i>10</i>	<i>830</i>	<i>330</i>	<i>1160</i>	<i>11</i>															
<i>Same</i>	<i>12124</i>			<i>41</i>		<i>14</i>	<i>19</i>	<i>55</i>	<i>19</i>	<i>42</i>		<i>2320</i>		<i>2320</i>	<i>260</i>			<i>2580</i>	<i>1/2</i>	<i>60</i>	<i>2520</i>	<i>1010</i>	<i>3530</i>	<i>9</i>															
<i>Schmelzer C. M.</i>	<i>"</i>	<i>22</i>		<i>43</i>	<i>62</i>			<i>65</i>	<i>62</i>	<i>42</i>		<i>2750</i>		<i>200</i>	<i>2950</i>	<i>300</i>		<i>3250</i>	<i>2</i>	<i>80</i>	<i>3170</i>	<i>1270</i>	<i>4440</i>	<i>9</i>															
<i>Same</i>	<i>5289</i>	<i>28</i>		<i>17</i>	<i>50</i>			<i>45</i>	<i>50</i>	<i>42</i>		<i>1910</i>			<i>1910</i>	<i>210</i>		<i>2120</i>			<i>2120</i>	<i>850</i>	<i>2970</i>	<i>6</i>															
<i>Schultz Lu C.</i>	<i>"</i>	<i>10</i>		<i>7</i>	<i>30</i>			<i>17</i>	<i>50</i>	<i>42</i>		<i>730</i>			<i>730</i>	<i>80</i>		<i>810</i>	<i>1/4</i>	<i>10</i>	<i>800</i>	<i>320</i>	<i>1120</i>	<i>6</i>															
<i>Signer Elias Mrs. Almira E.</i>	<i>3225</i>	<i>10</i>		<i>20</i>				<i>30</i>	<i>40</i>	<i>1200</i>		<i>150</i>		<i>100</i>	<i>1450</i>	<i>130</i>		<i>1580</i>	<i>1/4</i>	<i>10</i>	<i>1570</i>	<i>630</i>	<i>2200</i>	<i>4</i>															
<i>Seran Chas. F.</i>	<i>3469</i>	<i>5</i>						<i>5</i>	<i>36</i>	<i>180</i>		<i>180</i>			<i>180</i>	<i>20</i>		<i>200</i>			<i>200</i>	<i>80</i>	<i>280</i>	<i>10</i>															
<i>Same</i>	<i>3468</i>	<i>80</i>		<i>15</i>		<i>5</i>		<i>100</i>	<i>40</i>	<i>4000</i>	<i>100</i>	<i>4000</i>	<i>100</i>	<i>130</i>	<i>4250</i>	<i>440</i>		<i>4690</i>	<i>1/2</i>	<i>60</i>	<i>4630</i>	<i>1850</i>	<i>6480</i>	<i>10</i>															
<i>Shipley Chas. F.</i>	<i>11346</i>	<i>50</i>		<i>10</i>		<i>34</i>	<i>63</i>	<i>94</i>	<i>63</i>	<i>42</i>		<i>3920</i>	<i>400</i>	<i>250</i>	<i>4620</i>	<i>430</i>		<i>5050</i>	<i>1/2</i>	<i>20</i>	<i>5030</i>	<i>2110</i>	<i>7040</i>	<i>11</i>															
<i>Shipley Eva</i>	<i>"</i>	<i>60</i>		<i>12</i>		<i>8</i>	<i>73</i>	<i>80</i>	<i>73</i>	<i>42</i>		<i>3390</i>	<i>230</i>	<i>300</i>	<i>3940</i>	<i>370</i>		<i>4310</i>	<i>1/2</i>	<i>20</i>	<i>4290</i>	<i>1720</i>	<i>6010</i>	<i>11</i>															
<i>Shipley Henry</i>	<i>"</i>	<i>46</i>		<i>20</i>	<i>40</i>			<i>66</i>	<i>40</i>	<i>45</i>		<i>2990</i>	<i>500</i>	<i>400</i>	<i>3940</i>	<i>320</i>		<i>4210</i>	<i>1/4</i>	<i>80</i>	<i>4130</i>	<i>1450</i>	<i>5780</i>	<i>11</i>															
<i>Same</i>	<i>"</i>					<i>23</i>	<i>83</i>	<i>23</i>	<i>83</i>	<i>36</i>		<i>860</i>			<i>860</i>	<i>40</i>		<i>950</i>			<i>950</i>	<i>380</i>	<i>1330</i>	<i>11</i>															
<i>Shipley C. M.</i>	<i>"</i>			<i>4</i>	<i>45</i>			<i>4</i>	<i>45</i>	<i>44</i>		<i>190</i>	<i>400</i>	<i>300</i>	<i>490</i>	<i>20</i>		<i>910</i>	<i>1/2</i>	<i>20</i>	<i>890</i>	<i>368</i>	<i>1250</i>	<i>11</i>															
<i>Same</i>	<i>"</i>	<i>80</i>		<i>20</i>	<i>82</i>			<i>100</i>	<i>82</i>	<i>44</i>	<i>00</i>	<i>4430</i>			<i>4430</i>	<i>490</i>		<i>4920</i>	<i>1/2</i>	<i>20</i>	<i>4900</i>	<i>1960</i>	<i>6860</i>	<i>11</i>															
<i>Signer S. W.</i>	<i>3224</i>	<i>5</i>		<i>11</i>	<i>13</i>			<i>16</i>	<i>13</i>	<i>36</i>		<i>580</i>	<i>250</i>	<i>100</i>	<i>930</i>	<i>60</i>		<i>940</i>	<i>1/2</i>	<i>20</i>	<i>970</i>	<i>390</i>	<i>1360</i>	<i>6</i>															
<i>Same</i>	<i>"</i>	<i>4</i>	<i>50</i>	<i>8</i>	<i>50</i>			<i>13</i>	<i>10</i>	<i>520</i>		<i>520</i>			<i>520</i>	<i>60</i>		<i>580</i>	<i>1/2</i>	<i>20</i>	<i>560</i>	<i>220</i>	<i>780</i>	<i>6</i>															
<i>Skidmore Calvin</i>	<i>2832</i>	<i>19</i>				<i>60</i>		<i>79</i>	<i>38</i>	<i>380</i>	<i>300</i>	<i>3300</i>	<i>330</i>		<i>3300</i>	<i>330</i>		<i>3630</i>	<i>3/4</i>	<i>30</i>	<i>3600</i>	<i>1440</i>	<i>5040</i>	<i>2</i>															
<i>Same</i>	<i>5092</i>	<i>22</i>	<i>25</i>					<i>22</i>	<i>25</i>	<i>40</i>		<i>890</i>			<i>890</i>	<i>100</i>		<i>990</i>			<i>990</i>	<i>400</i>	<i>1390</i>	<i>2</i>															
<i>Skidmore David M.</i>	<i>2984</i>	<i>28</i>	<i>50</i>	<i>4</i>		<i>12</i>		<i>44</i>	<i>50</i>	<i>44</i>		<i>1580</i>	<i>450</i>	<i>250</i>	<i>2580</i>	<i>210</i>		<i>2870</i>	<i>1/4</i>	<i>50</i>	<i>2820</i>	<i>1130</i>	<i>3950</i>	<i>4</i>															
<i>Same</i>	<i>2832</i>	<i>34</i>		<i>23</i>	<i>52</i>			<i>57</i>	<i>52</i>	<i>44</i>		<i>2540</i>		<i>150</i>	<i>2690</i>	<i>280</i>		<i>2970</i>	<i>1</i>	<i>40</i>	<i>2930</i>	<i>1170</i>	<i>4100</i>	<i>2</i>															
<i>Same</i>	<i>2982</i>	<i>36</i>		<i>15</i>				<i>51</i>	<i>44</i>	<i>2240</i>		<i>2240</i>	<i>250</i>		<i>2240</i>	<i>250</i>		<i>2490</i>	<i>2 1/2</i>	<i>100</i>	<i>2390</i>	<i>960</i>	<i>3350</i>	<i>2</i>															
<i>Skidmore Don J.</i>	<i>"</i>	<i>18</i>		<i>16</i>		<i>10</i>	<i>46</i>	<i>44</i>	<i>46</i>	<i>40</i>		<i>1780</i>			<i>1780</i>	<i>200</i>		<i>1980</i>	<i>1/2</i>	<i>20</i>	<i>1960</i>	<i>780</i>	<i>2740</i>	<i>2</i>															
<i>Skidmore Edward S.</i>	<i>3235</i>	<i>14</i>	<i>10</i>					<i>14</i>	<i>10</i>	<i>41</i>		<i>580</i>			<i>580</i>	<i>60</i>		<i>640</i>	<i>1/2</i>	<i>20</i>	<i>620</i>	<i>250</i>	<i>870</i>	<i>4</i>															
<i>Same</i>	<i>2984</i>	<i>25</i>				<i>13</i>	<i>70</i>	<i>38</i>	<i>70</i>	<i>42</i>		<i>1630</i>			<i>1630</i>	<i>180</i>		<i>1810</i>			<i>1810</i>	<i>720</i>	<i>2530</i>	<i>4</i>															
<i>Skidmore Edwin F.</i>	<i>2832</i>	<i>32</i>				<i>27</i>	<i>40</i>	<i>59</i>	<i>40</i>	<i>42</i>		<i>2490</i>	<i>100</i>		<i>2590</i>	<i>270</i>		<i>2860</i>	<i>3/4</i>	<i>30</i>	<i>2830</i>	<i>1130</i>	<i>3960</i>	<i>2</i>															
<i>Skidmore Harry Jr. Clarence</i>	<i>"</i>	<i>33</i>				<i>7</i>		<i>40</i>		<i>44</i>		<i>1760</i>			<i>1760</i>	<i>190</i>		<i>1950</i>	<i>1/4</i>	<i>10</i>	<i>1940</i>	<i>780</i>	<i>2720</i>	<i>2</i>															

York

IN WHOSE NAME ASSESSED	No. of Entry	No. ACRES LAND CLASSIFIED						TOTAL ACRES		Value per Acre Excluding Buildings		VALUE OF ALL BUILDINGS					Total Value as Equalized by County Board	Deduct Value Roads	Balance	Changed by State Board	Total Dup. Value as Equalized	Plat Page	TRANSFERRED TO	DATE TRANSFERRED	DUP. OF WHAT YEAR					REMARKS					
		Arable and Plow Land		Meadow and Pasture Land		Uncultivated and Wood Land		Dollars	Cts.	House	House	Mills	Barns and other Buildings	Total Value and Buildings	House	'09									'10	'11	'12	'13							
		Acres	H.	Acres	H.	Acres	H.	Acres	H.	Dollars	Cts.	Dollars	Dollars	Dollars	Dollars	Dollars	Acres	Dollars	Dollars	Added	Deduct	Dollars	Page	Page	Page	Page	Page								
Stalder Louisa.	3238	35		24	40			59	40	35				2080						2310	3/4	30	2250	910	3190	8									
Stalder Seneca.	5387	55		30		10	50	115	50	37			100	4270	1100					4770	3/4	30	5220	2090	7310	8									
Stalder Mrs.	3225	22				8		30		36				1080						1080			1200	480	1680	4									
Stalder Mrs. b.	"	20						20		36				720						720			800	320	1120	4									
Staley Aquilla T.	3238	28		10		12		50		36				1800						1800	3/4	30	1970	790	2760	8									
Staley Aquilla Tr. H. J.	3469	16		46		8	16	66	16	38				2510						2510	1/2	20	2770	1110	3880	10									
Staley Aquilla Tr. Hester J.	3468	57						57		48				2730						2730	2	90	2940	1180	4120	10									
Same.	3227	11				11	75	22	75	44				1080						1080	1/4	10	1100	440	1540	9									
Staley Lettie	3238	20		20				40		38			350	1520						1520	1	40	2750	1100	3850	8									
Staley Peter.	3469	9	75					9	75	38				440						440	1/2	20	390	160	550	10									
Staley Peter + Martha.	"	75		20		15	75	110	75	38				4200						4300	1	40	4720	1890	6610	10									
Stall Oscar H. + Ellen M.	3238	34		10		8	40	52	40	28			150	1460						1710	1/2	20	1850	740	2590	8									
Stamatz Cymus.	11346	128		30		10	56	268	56	38				10200						11200	2	70	12230	4890	17120	11									
Stamatz John.	12542	70		20		10		100		42			300	4200						4700	1 1/2	50	5110	2040	7150	11									
Stamatz M. F.	11246	58		18		12		88		38			300	3340						3840	1 1/2	50	4160	1630	5790	11									
Stemmer Paul + Jry L.	5290	79		25		25		104		42			450	4370						4820	3/4	30	5250	2110	7390	3-7									
Same.	"			4				4		38				150						150			170	70	240	3-7									
Stickel C. D.	12542	10				4	20	14	20	38				440						440			490	200	690	11									
Stickel Margaret	"	39		10	25			49	25	38			500	1870						2470	1	40	2640	660	3700	11									
Stiggers Lewis W.	3234	11		12				23		40			330	920						1270	1/4	10	1360	540	1900	18									
Stomus Oliver C.	3239	22				11	67	33	67	38				1280						1380	1/2	20	1400	560	1960	5									
Same	"	64		20		10	17	94	17	40			150	3760						3910	1 1/2	50	4270	1720	5990	5									
Same	"	20		40	07			60	07	40			400	2400	400					2900	1	40	3120	1250	4870	5									
Same	"	3	90					2	90	40				150						150			170	70	240	5									
Same	3234			26	75			26	75	36				960						960	1/4	10	1060	420	1480	6									
Stomus Oliver C. + Ruth	3239	55		20	90			75	90	38				2880						2880	1/2	20	3150	1270	4450	5									
Stomus Ruth.	"	12	70					12	70	40				510						510	1/4	10	560	220	780	5									
Stultz Mattai.	3234			3	69			3	69	50			100	180	350					630			650	260	910	20									
Stultz Alva.	12468	23		12	75			35	75	42			400	1500						1900	1/2	20	2040	820	2860	10									
Stultz Rubin.	12124	60		30	75			90	75	42				3810						3810			4230	1680	5920	9									
Same	15707			3				3		42			500	130						1230	1/4	10	1230	490	1720	9									
Same	12506			3				3		42				130						130	1/4	10	130	50	180	9									
Swan C. H.	2832	4						4		45				180						180			200	80	280	2									
Same.	5092	5	04					5	04	45				210						210			230	90	320	2									
State of Ohio.																																			
Shas Biggs	3234					23		25	50					10						10			10	10	20	20									

Assessment of Real Property in *York* Township,

Taylor Sch. Dist. Union County, Ohio, for the Year 1910.

IN WHOSE NAME ASSESSED	No. of Entry	No. ACRES LAND CLASSIFIED						TOTAL ACRES				Value per Acre Excluding Buildings				Total Value Land Excluding Buildings				VALUE OF ALL BUILDINGS				Total Value Lands and Buildings	Changed by County Board of Equalization	
		Arable and Plow Land		Meadow and Pasture Land		Uncultivated and Wood Land		Acres		Dolls.		Dollars		House		Mills		Barns and other Build'gs		Add	Deduct					
		Acres	H.	Acres	H.	Acres	H.	Acres	H.	Dolls.	Cts.	Dollars	Dollars	Dollars	Dollars	Dollars	Dollars	Dollars								
<i>Trans Regiah H.</i>	3470	15		13	25			28	25	26			780	100					830	80						
<i>For Charles G.</i>	5387	28		15	80			43	80	30			1300						1800	140						
<i>For Elizabeth</i>	"	78		50		40		168		25			4200	150					4350	460						
<i>Kress L. W.</i>	3470	15		5	30			20	50	28			570	100					670	60						
<i>Same.</i>	"			11				11		28			320						320	30						
<i>Platts D. L.</i>	11346	21		4				25		35			870	100					970	100						
<i>Leard Eva B.</i>	5387			2				2		30			60						60	10						
<i>Smith Chlander H.</i>	5387	25		97	30			122	30	30			3660						3660	410						
<i>Taylor Hannah M.</i>	3470	2		1		3		3		28			80						80	10						

Total Value as Equalized by County Board	Deduct Value Roads	Balance	Changed by State Board		Total Dup. Value as Equalized	Plat Page	TRANSFERRED TO	DATE TRANSFERRED	DUP. OF WHAT YEAR					REMARKS
			Added	Deduct					'09	'10	'11	'12	'13	
Dollars	Acres	Doll.	Dollars	Dollars	Dollars				Page	Page	Page	Page	Page	
910	3/4	20	890	360	1250	10								
1440	1 1/2	40	1400	560	1960	8								
4810			4810	1920	6730	8								
730	1/4	10	720	190	1010	10								
350	3/4	20	330	130	460	10								
1070			1070	430	1500									
70			70	30	100	8								
4070	1 1/2	50	4020	1610	5630	8								
90			90	40	130	10								

184 182 35 57 30 423 85 11790 950 13240 1300

13570 140 13400 5370 18770

IN WHOSE NAME ASSESSED	No. of Entry	No. ACRES LAND CLASSIFIED						TOTAL ACRES		Value per Acre Excluding Buildings		VALUE OF ALL BUILDINGS					Total Value Lands and Buildings	Changed by County Board of Equalization		Total Value as Equalized by County Board	Deduct Value Roads	Balance	Changed by State Board		Total Dup. Value as Equalized	Plat Page	TRANSFERRED TO	DATE TRANSFERRED	DUP. OF WHAT YEAR					REMARKS				
		Arable and Plow Land		Meadow and Pasture Land		Uncultivated and Wood Land		Dollars	Cts.	Dollars	House	House	Mills	Barns and other Build'gs	Add	Deduct		'09	'10				'11	'12					'13									
		Acres	H.	Acres	H.	Acres	H.																							Acres	H.	Dollars	Acres		Dollars	Dollars	Dollars	Dollars
Page 1		1291	59	271	25	449	81	2012	65		82010	7300	150	3650	93010	9080			102090	1070	101020	40410	141530															
" 2		540	50	333	23	187	33	1061	55		41350	5000		1700	48050	4540			52590	650	51940	20810	72750															
" 3		813		348	41	430	80	1592	21		62630	5250		2400	70280	6870			77150	760	76390	20540	106930															
" 4		800	40	396	98	263	12	1460	50		59330	4050	950	350	2650	67330	6560			73890	850	73040	29190	102230														
" 5		687	50	685	55	218	64	1591	69		57730	3750		1600	63080	6400			69480	780	68700	27430	96130															
" 6		1110	66	310	29	231	58	1652	53		64120	5800		3500	73420	7060			80500	980	72520	31820	111340															
" 7		732		185	37	293	05	1210	42		46750	3450		1500	51700	5200			56900	610	56290	22550	78840															
" 8		840	43	347	92	299	95	1488	30		60000	5600	300	1950	67850	6600			74450	940	73510	29450	102940															
" 9		964	20	389	87	198	66	1552	73		62670	6010		3000	71680	6900			78580	820	77760	31040	108850															
" 10		711	30	370	15	194	82	1276	27		57260	5250		2550	58060	5640			64200	670	63330	25740	88940															
" 11		926	10	417	82	347	01	1690	93		70380	6350		2850	79580	7710			87290	1090	86200	34490	120690															
" 12		1380	35	472	21	502	35	2354	91		92910	5650		2800	101410	10200			111610	1350	110260	44050	154310															
" 13		947	39	435	56	254	41	1637	36		67320	4950		3000	75270	7400			82680	770	81910	32750	114660															
" 14		703	18	502	33	237	04	1442	53		57910	7400	750	2700	68760	6360			75120	640	74460	29820	104300															
" 15		590		338	61	159	55	1088	16		43910	3950		1350	49210	4830			54040	850	53190	21230	74420															
Taylor School District		184		182	35	57	50	423	85		11790	450			12240	1300			13540	140	13400	5370	18770															
Total		13222	60	5988	39	4325	62	2353	61		932070	80110	2150	350	36750	1057440	102670			1154110	12970	1141140	456350	1597530														
Somersville (1)											470	2000			2476	00			2470		2470	990	3460															
2											350	1700			100	2150	00		2150		2150	880	3030															
Grand Total		13222	60	5988	39	4325	62	2353	61		932890	83810	2150	350	36850	1058060	102670			1158730	12970	1145760	456200	1604020														

As per a without Reg 13960
 4500

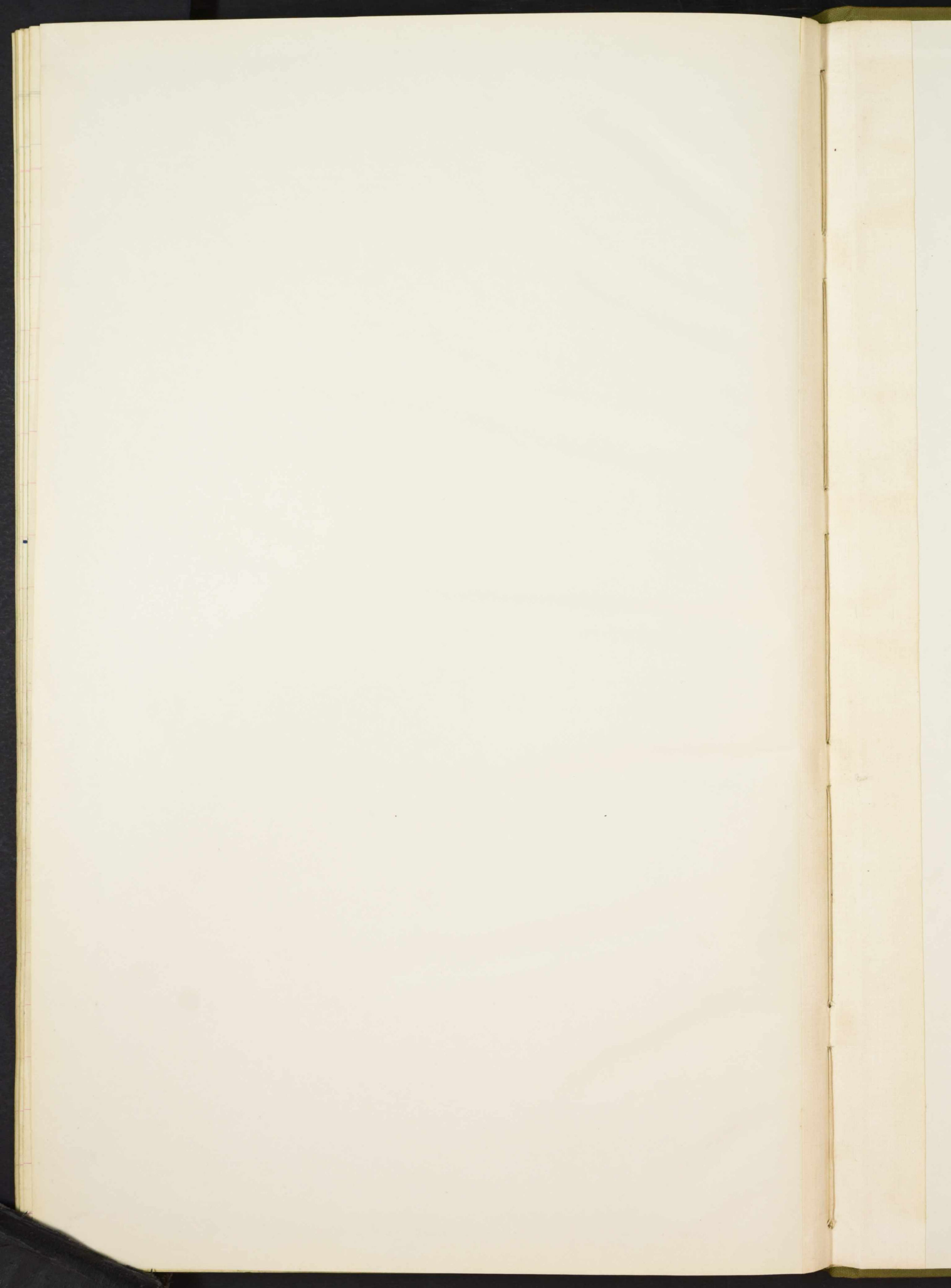
IN WHOSE NAME ASSESSED	DESCRIPTION											Total Value Lot Excluding Buildings	VALUE OF ALL BUILDINGS					Total Value Lot and Buildings	Plat Page	TRANSFERRED TO	DATE TRANSFERRED	DUP. OF WHAT YEAR					REMARKS						
	In Lot	Out Lot	What Part	Addition	Street	Fl.	Hds.	Street	Fl.	Hds.	Dollars		House	House	Mills	Barns and other Build'gs	Dollars					Equalized by County Board	Total as Equalized by County Board	Equalized by State Board	Total Dup. Value as Equalized	'09		'10	'11	'12	'13		
													Dollars	Dollars	Dollars	Dollars						Added	Deduct	Dollars	Added	Deduct		Dollars	Page	Page	Page	Page	Page
Church, M.E. Summerville		50d									30	600				630																	
Church, Friends		50a									30	400				430																	
Church, Presbyterian		50									30	500				530																	
Church, M.E. York		50									30	1200				1230																	
Church, U.B. York		50									30	600				630																	
Church, M.E. Bethel		25									20	1500				1500																	
	3236																																
Cemetery, York	15										600	200		100	900																		
Cemetery, Summerville	50										30				30																		
Cemetery, York Presby'n	2										100				100																		
Cemetery, Southard Town	1										50				50																		
York	52234										12 1/2																						
School Dist #1	1										50	350			400																		
School #2	1										50	800			850																		
School #3	1										50	500			500																		
School #4	1										50	400			450																		
School #5	1										50	400			450																		
School #6	50										30	300			330																		
School #7	50										30	400			430																		
School #8	1										50	300			350																		
School #9	1										50	300			300																		
School #10	50										30	450			480																		
School #11	1										50	350			400																		
School #12	1										50	300			350																		

Restored to Dwp 1/24-17

Restored to Dwp 5/24-19

Restored to Dwp 4/8-22 -

11720



**YORK TP.
UNION COUNTY
1910**