

**UNION TP.
UNION COUNTY
1910**

UNION

1910

**UNION TP.
UNION COUNTY
1910**

UNIO

To /

ITEMIZED

- 17th day
- 18 day
- 19 day
- 20 day
- 21 day
- 22 day
- 24 day
- 25 day
- 26 day
- 27 day
- 28 day
- 29 day
- 31 day
- 1 day
- 2 day
- 4 day
- 5 day
- 6 day
- 7 day
- 8 day
- 9 day
- 11 day
- 12 day
- 13 day
- 14 day
- 15 day
- 16 day
- 18 day
- 19 day
- 20 day
- 21 day
- 22 day
- 23 day
- 25 day
- 26 day
- 27 day
- 28 day
- 29 day
- 30 day
- 2 day
- 3 day
- 4 day
- 5 day
- 6 day
- 7 day
- 9 day
- 10 day
- 11 day
- 12 day
- 13 day

Robinson

139.00
39.50

159.50

APPRAISER'S ACCOUNT.

UNION COUNTY

To *Walter Howard* Land Appraiser of *Union Township* Dr.

ITEMIZED STATEMENT OF DAYS ACTUALLY EMPLOYED IN MAKING SAID APPRAISEMENT.	
17 th day of <i>Jan'y</i>	14 th day of <i>May</i>
18 th day of "	16 th day of "
19 th day of "	17 th day of "
20 th day of "	18 th day of "
21 st day of "	19 th day of "
22 nd day of "	20 th day of "
24 th day of "	21 st day of "
25 th day of "	23 rd day of "
26 th day of "	24 th day of "
27 th day of "	25 th day of "
28 th day of "	26 th day of "
29 th day of "	27 th day of "
31 st day of "	28 th day of "
1 st day of <i>April</i>	31 st day of "
2 nd day of "	1 st day of <i>June</i>
4 th day of "	10 th day of "
5 th day of "	22 nd day of "
6 th day of "	23 rd day of "
7 th day of "	24 th day of "
8 th day of "	25 th day of "
9 th day of "	day of "
11 th day of "	day of "
12 th day of "	day of "
13 th day of "	day of "
14 th day of "	day of "
15 th day of "	day of "
16 th day of "	day of "
18 th day of "	day of "
19 th day of "	day of "
20 th day of "	day of "
21 st day of "	day of "
22 nd day of "	day of "
23 rd day of "	day of "
25 th day of "	day of "
26 th day of "	day of "
27 th day of "	day of "
28 th day of "	day of "
29 th day of "	day of "
30 th day of "	day of "
2 nd day of <i>May</i>	day of "
3 rd day of "	day of "
4 th day of "	day of "
5 th day of "	day of "
6 th day of "	day of "
7 th day of "	day of "
9 th day of "	day of "
10 th day of "	day of "
11 th day of "	day of "
12 th day of "	day of "
13 th day of "	day of "

For services rendered in appraising the Real Estate of said Township, for the year 1910, occupying 70 days, between the 17th day of *January*, and the 25th day of *June*, at \$ 3 50 per day, \$ 245 00.

And the said *Walter Howard* being duly sworn, solemnly declares that the number of days herein stated were necessarily occupied in the appraisement of said Township, and that this account is in all respects just and true.

(Signed) *Walter Howard* Appraiser.

Sworn to and subscribed before me, this 2nd day of *July*, 1910.

(Signed) *Amos D. Gray* Deputy Auditor of said County.

The above account is hereby approved this 6th day of *July*, 1910.

L. W. Cline
E. J. Jones
A. R. Witt } Commissioners, Union County, Ohio.

Received *Aug 6*, 1910, of the Auditor of Union County, an order on the Treasurer of said County, for *Two Hundred Forty Five* Dollars and Cents, in full of the above account.

(Signed) *Walter Howard* Appraiser.

STATEMENT OF SURVEYS.

W. H. STANAGE & CO., DIST. O.

No. OF ORIGINAL SURVEY	Original Quantity	ORIGINAL PROPRIETORS	WATER COURSE	PAGE	No. OF
2675	1000	Lucas Sullivant	Darby Creek.	8	77
3196	100	Warren Cash	Hay Run	7	77
3311	200	Lucas Sullivant	Darby Creek	7 & 8'	77
3459	400	James Waters	Darby Creek	10	77
3483	450	P. Stephenson & L. Sullivant	Darby Creek.	8	78
4071	1080	Elizabeth Rickman	Darby Creek	10	79
4277	366 ² / ₃	Robert Kays & Lucas Sullivant	Darby Creek	4	79
4278	2000	Robert Kays.	Darby Creek	11	80
4735	283	Frederick Stanton & Daniel Bailey	N. Br. Little Darby Ck	2	80
4769	200	Duncan M ^{rs} . Arthur	S. F. K. Darby Creek.	2	80
4804	324	J. Fowler.	Treacles Creek.	7	81
4805	400	Abolom Bainbridge	Little Darby Creek	7	81
4807	466 ² / ₃	Obadiah Smith	Little Darby Creek.	5	81
4818	100	John Cole.	Darby Creek.	7b	81
4820-4945 & 5207		J. Swaringer	Little Darby Creek	7	
4946.	200	William Heth	Little Darby Creek.	5	90
5038	80	James Galloway Jr.	Darby Creek.	9	94
5127	150	Alexander Kerr	Darby Creek.	6 & 11	95
5265	700	Robert Means.	Treacles Creek	5	97
5291	200	Thomas Holt.	Darby Creek (S. F. K.)	2 & 5	97
5301	200	Robert Means.	Treacles Creek	2	
5475	100	Hugh Montgomery	Treacles Creek.	2	10
5602	100	John Patterson	Darby Creek.	7	
5708	200	James Galloway Jr.	Treacles Creek.	3	12
5726	1000	Robert Young (Cops)	Treacles Creek.	3	12
5740	255	Samuel Finley	Treacles Creek.	7	12
5743	200	James Galloway Jr.	Little Darby Creek.	7	12
5746	360	James Galloway Jr.	Rodgers Run	10	12
5754	150	John Messenburgh	Treacles Creek.	3	12
5863.	550	Thomas M. Bayly.	Treacles Creek.	2	12
6233.	100	Guttle Hudson.	Treacles Creek.	7	14
6312	300	Richard Apperson.	Treacles Creek.	2	
6316	353 ² / ₃	R. Apperson & B. Stubblefield.	Treacles Creek.	7	15
6543	200	Andrew Alexander.	Darby Creek.	7	
6602.	683	James Galloway Jr.	Treacles Creek.	7	
7142.	100	James Galloway Jr.	Treacles Creek.	2	
7406.	200	David Comer.	Treacles Creek	4	
7407.	100	Alexander Reed.	Darby Creek.	4	
7472 & 7677.	172	Benjamin Hough.	Treacles Creek	7	
7474	640	J. Graham, J. Johnson & W. Dun.	Treacles Creek	5 & 7	
7491.	1500	Thomas Moore.	Treacles Creek	3	
7492 & 9461	500	Wm Robinson & John F. Fulton.	Treacles Creek	2 & 3	
7676.	100	John Erwin	Treacles Creek.	2.	

STATEMENT OF SURVEYS.

PAGE	No. OF ORIGINAL SURVEY	Original Quantity	ORIGINAL PROPRIETORS	WATER COURSE	PAGE
8	7734	100	James Galloway Jr.	Darby Creek.	9
	7770 and 7836.	284	Anthony Walke.	Darby Creek.	4
7	7771.	80	Walter Dun.	Darby Creek.	9
7 & 8	7789	800	Joseph Parrott.	Treadles Creek.	5
10	7790	95	Anthony Walke	Treadles Creek.	5
8	7822	3337	F. Walke & F. Jones.	Darby Creek.	4
	7926	260	John Graham & Gross Longgs	Treadles Creek.	5
10	7967	195	Robert Green.	Treadles Creek.	2 & 5
4					
11	8135	100	George Hoover.	Little Darby Creek.	2
Ck 2	8151	120	Nathan Haines & H. Whiting	Treadles Creek.	2 & 5
2	8152	220	Henry Whiting	Treadles Creek.	6
7	8153	94	John Graham.	Darby Creek.	9
7	8414	368	Walter Dun.	Treadles Creek.	2 & 5
5	8415	500	Anthony Walke & others.	Treadles Creek.	7
7 & 6	8523.	869 1/2	J. Johnson & others.	Darby & Treadles Creek.	9
7					
5	9020	120	J & B. W. Ladd & Thos. Howell.	Treadles Creek.	2
	9390	95	Walter Dun.	Darby Creek.	4
9	9494	400	Walter Dun	Darby Creek.	6
6 & 11	9591	100	Walter Dun	Darby Creek.	6
5	9755	60	Walter Dun.	Treadles Creek.	7
2 & 5	9798.	1024 1/3	Joshua Pythress.	Treadles & Darby Creek.	6
2					
2	10338.	200	A. Breckenridge & Wm Boyce.	Treadles Creek.	7
7					
3	12166	600	Samuel Smith	Darby Creek.	9
3	12238	185	Walter Dun.	Darby Creek.	9
7	12239	70	Walter Dun.	Darby Creek.	9
7	12349	38	James Galloway Jr.	Darby Creek.	10
10	12494	8	Joseph Spencer	Treadles Creek.	2
3	12674	120	Thomas Lucas.	Darby Creek.	7
2	12748.	14 2/3.	Walter Dun.	Darby Creek.	4
7					
2	14192	30	Nathaniel Massie	Darby Creek.	10
7					
7	15907	4	Anthony Walke.	Darby Creek.	6.
7					
7					
2					
4					
4					
7					
5 & 7					
3					
2 & 3					
2.					

SCALE, 80 POLES TO AN INCH.

Champaign Co.

A. Watke
No. 7822-
Page. 4.

Messenburg
No. 5754-150A
Page. 3.

Thos. Moore
No. 7491-1500 A.
Page. 3.

Robert
No. 5726-
Page. 3.

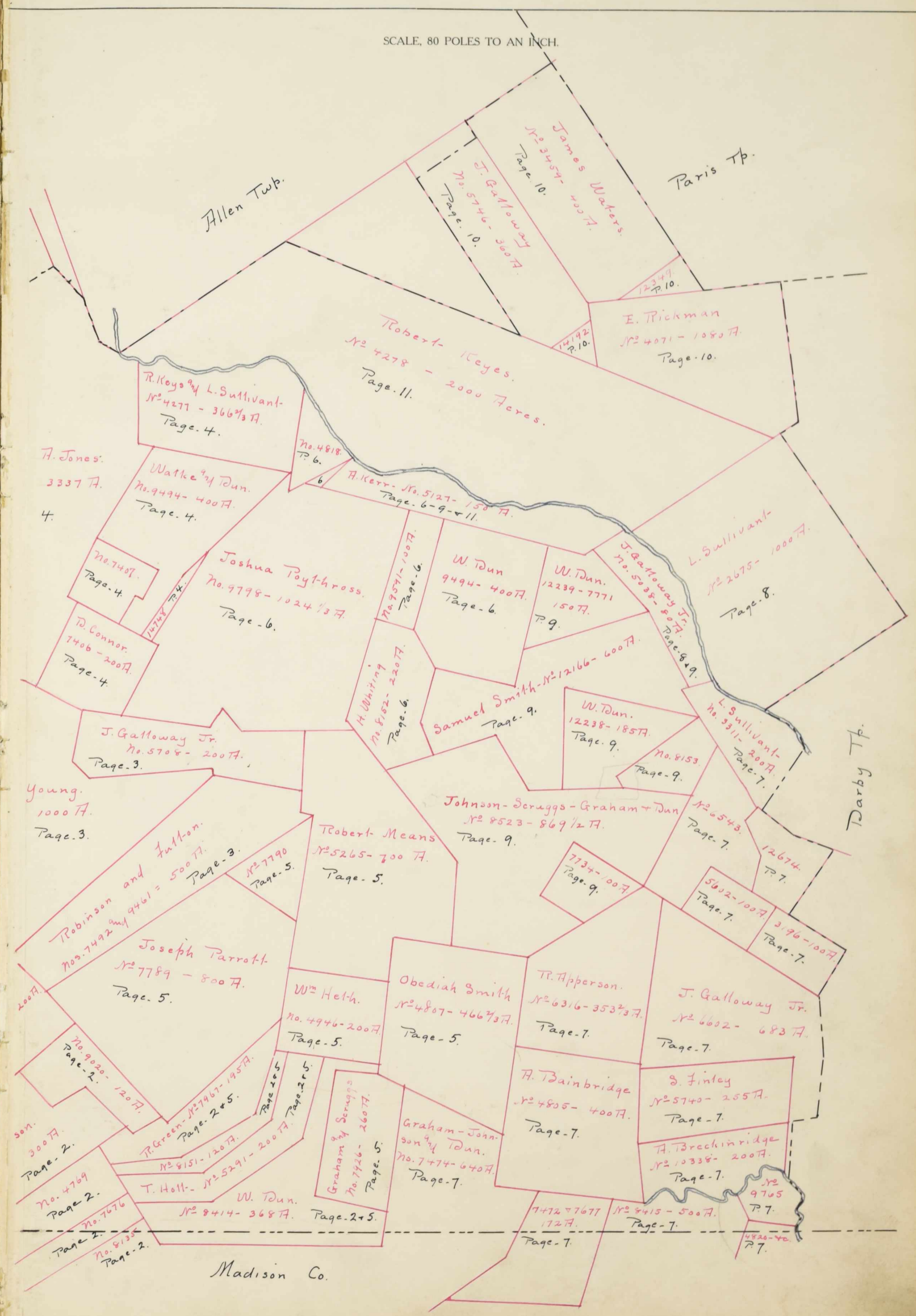
T.M. Bayley
No. 5763-550A
Page. 2.

Shambert Bayley
No. 4735-283A
Page. 2.

J. Fowler
No. 4804-200A
Page. 2.

J. Galloway
No. 7112-100A
Page. 2.

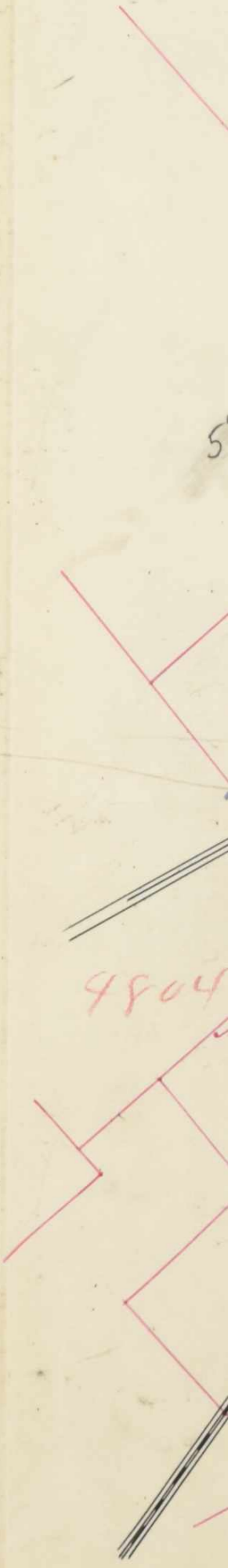
R. apber
No. 6312-
Page. 2.



OK 5.75
Recalculation "b/s by Alvin Graham
Frank C. Miller - 159.50 cents

15
11
26

9804

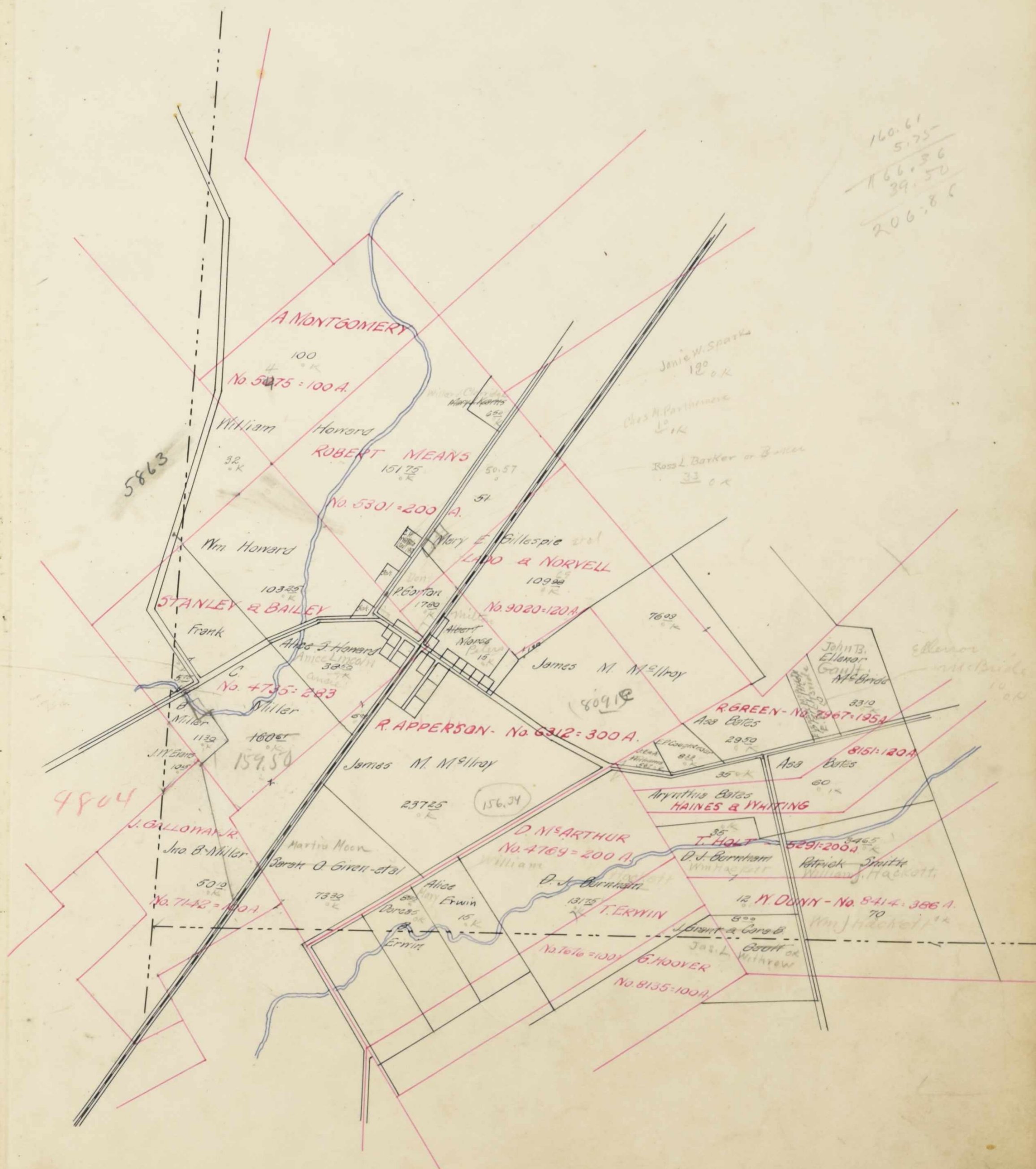


SURVEY No. 5415-5863-7789-

9020-5301-4735-63/2 etc.

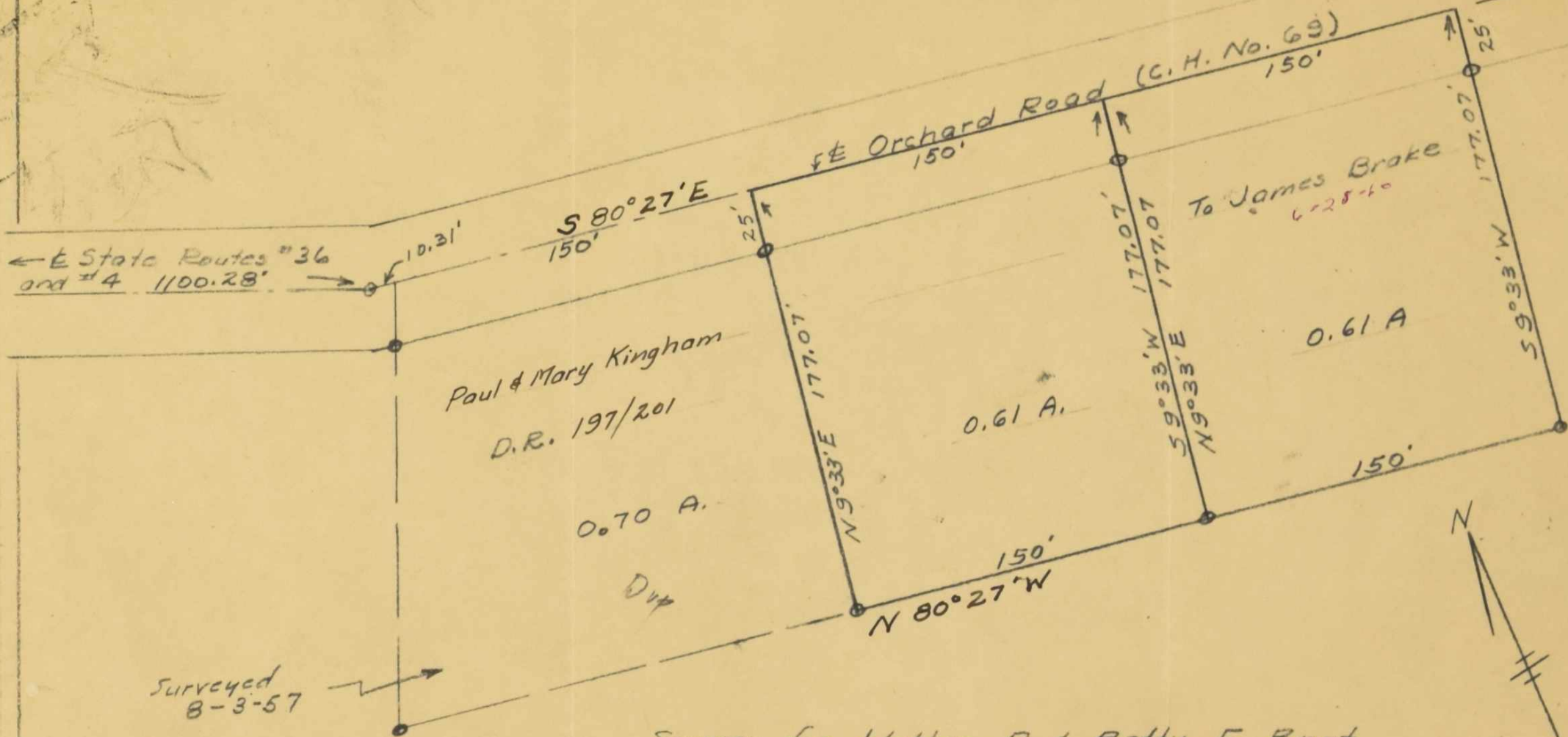
5.75
160.61
33.50
205.86

SCALE, 80 POLES TO AN INCH.



160.61
5.75
166.36
39.50
205.86

← E State Routes #36
and #4 1100.28' →



Surveyed
8-3-57

Survey for Walter R. & Betty F. Burt
Union County, Twp. of Union, V.M.S. # 4278
By J. Donald Hart, Reg. Surveyor
May 4, 1960 - Scale 1" = 60'
• - Iron pins

J. Donald Hart

Recorded Survey Record Vol. — , Page —

OFFICE OF
COUNTY ENGINEER
UNION COUNTY, OHIO
PHONE 4720

CLAUDE F. SKIDMORE, ENGINEER

MARYSVILLE, OHIO

January 29, 1942

Mr. Frank Smith,
Auditor, Union County,
Marysville, Ohio

Dear Sir:

On January 14th, I made a survey of lands in Union Township,
Union County and Rush Township, Champaign County, listed on the
tax duplicate in the name of Edna B. Pratt:

Champaign County, Rush Twp.	V.M.S. 7491	-	137.20 A.
Union County, Union Twp.	V.M.S. 7491	-	40.10 A.
	V.M.S. 5726	-	31.50 A.

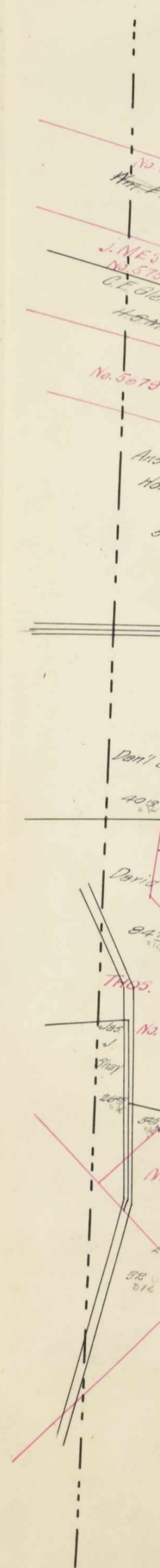
I hereby certify the correct acreage as measured to be

Champaign County, Rush Twp.	V.M.S. 7491	-	138.85 A.
Union County, Union Twp.	V.M.S. 7491	-	40.16 A. ✓
	V.M.S. 5726	-	31.62 A. ✓

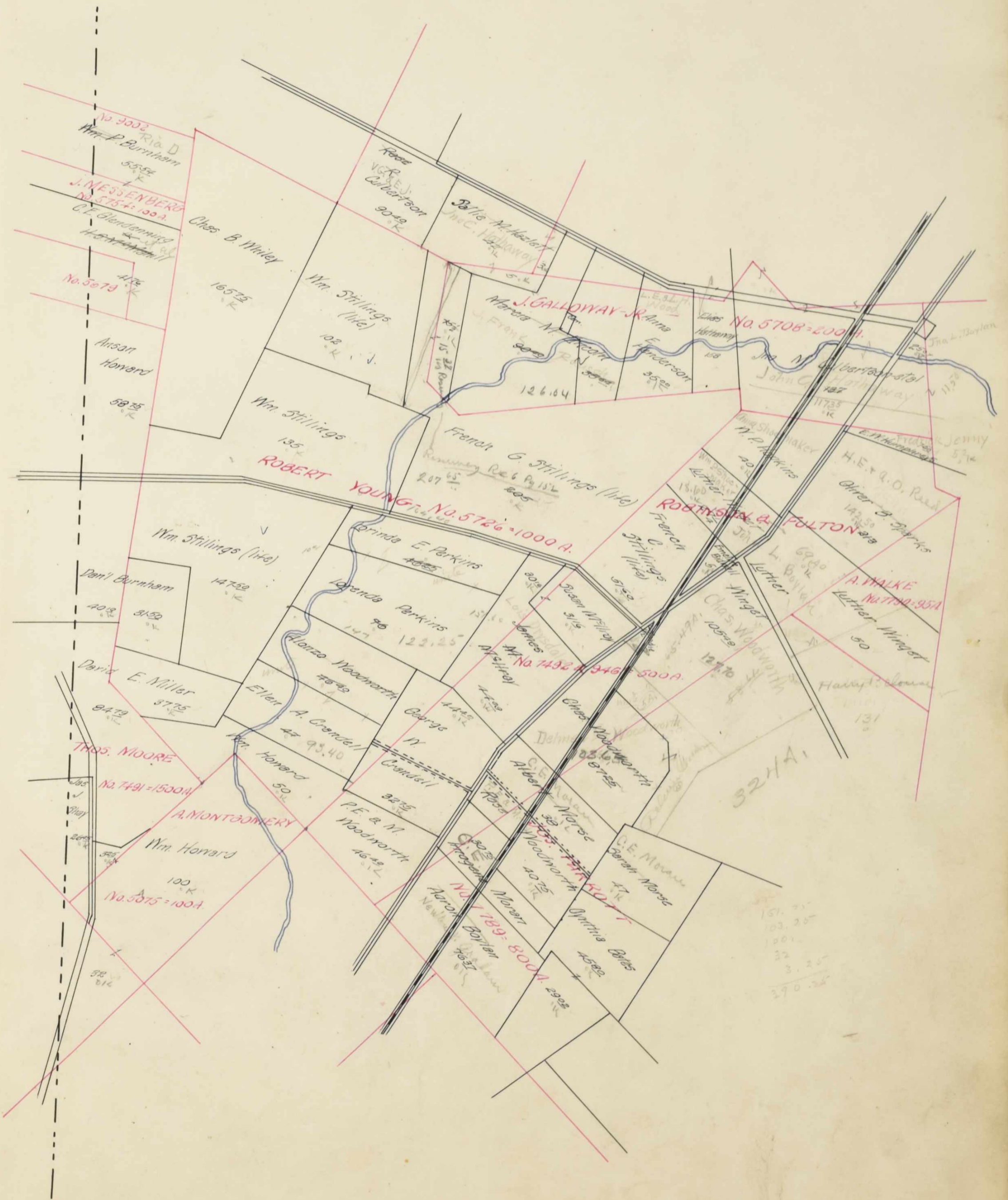
Total 210.63 A.

Signed *Claude F. Skidmore*
Registered Engineer

Plat Recorded in Union County Surveyor's Record Vol. 6,
Page 231.



SCALE, 80 FEET TO AN INCH.



230
152 3/4

582 3/4

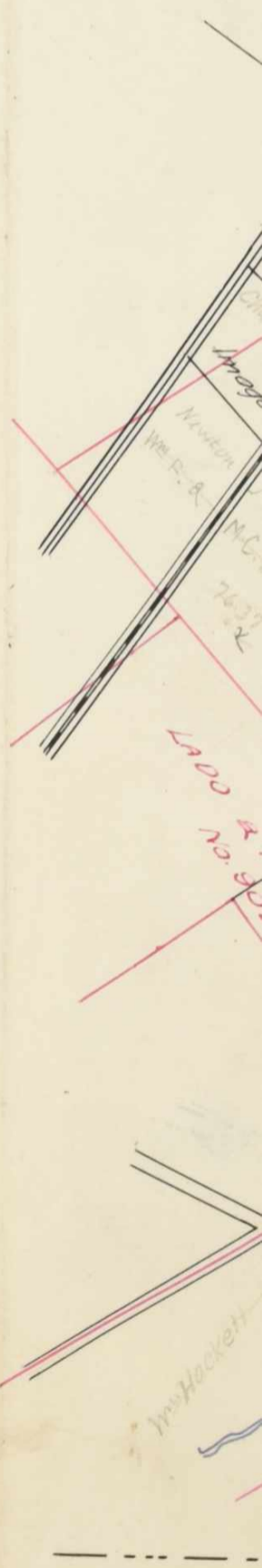
Erastus
John Bish



SURVEY No. 7822-4277-9390-7407-7406-12748.

SCALE, 80 POLES TO AN INCH.

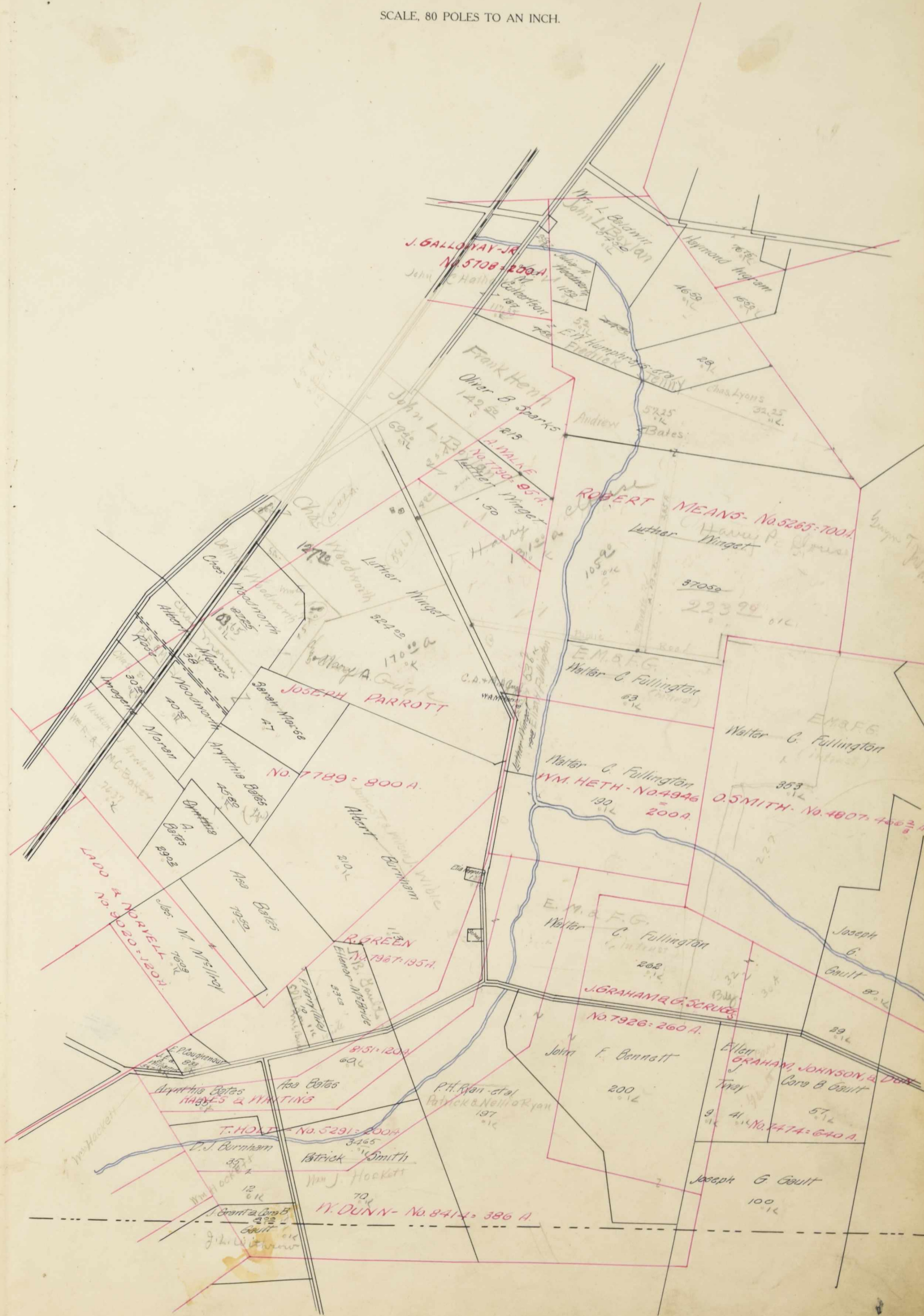




SURVEY No. 4807-7790-5265-

4946-7789-7967-8151₄₀

SCALE, 80 POLES TO AN INCH.



162.25-

59.45-

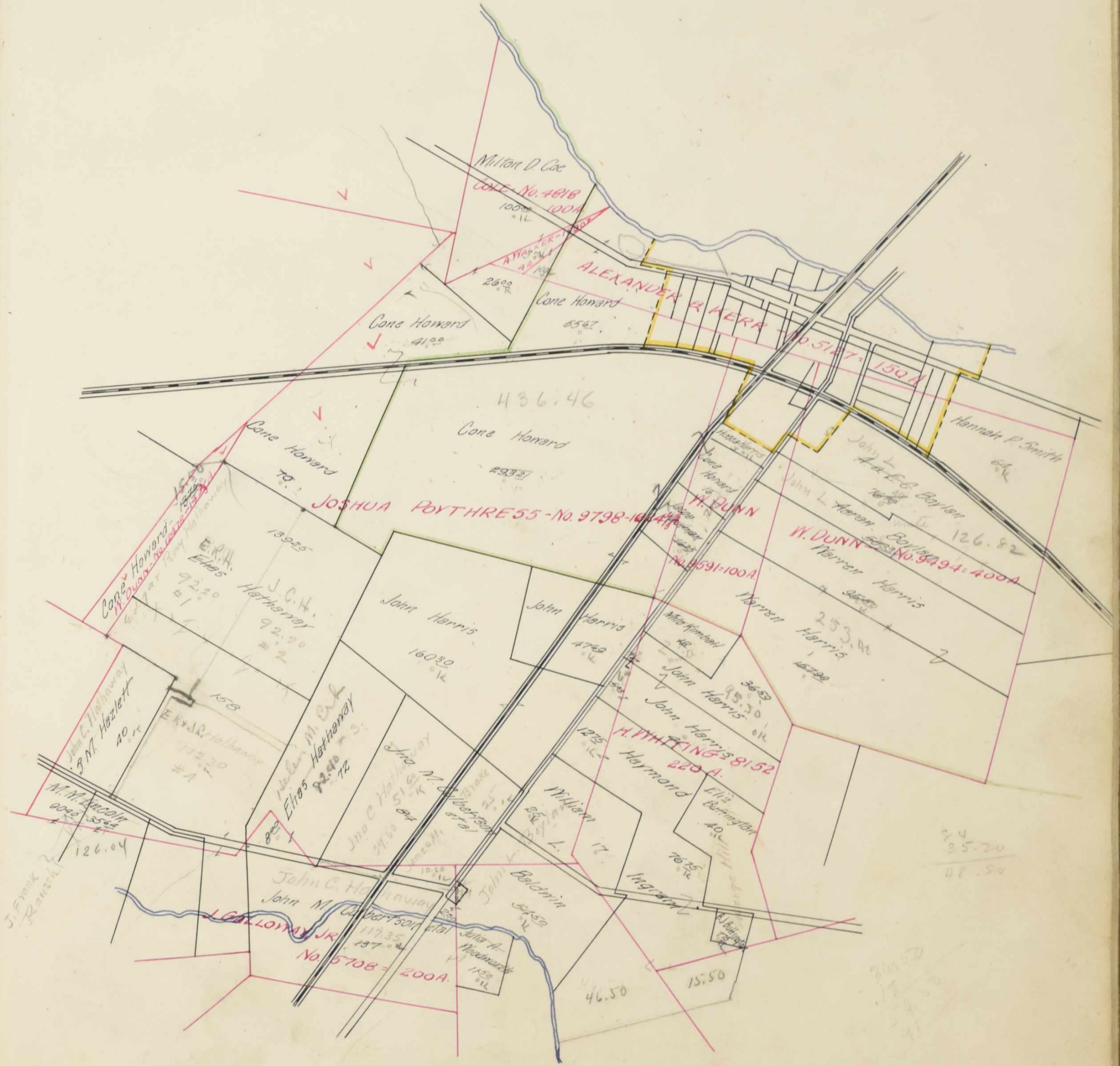
80.4

26.10

59.60

Cape H
 John C. Hollaway
 S.M. Hazlett
 40
 M.M. Biddell
 126.04
 J. Frank
 Ramsell

SCALE, 80 POLES TO AN INCH.



Milford Com. Sch. Dist.

293 21
70 21
41 21
404 21
16 21
16 21
40 21

OBEIDIAH

No. 4807

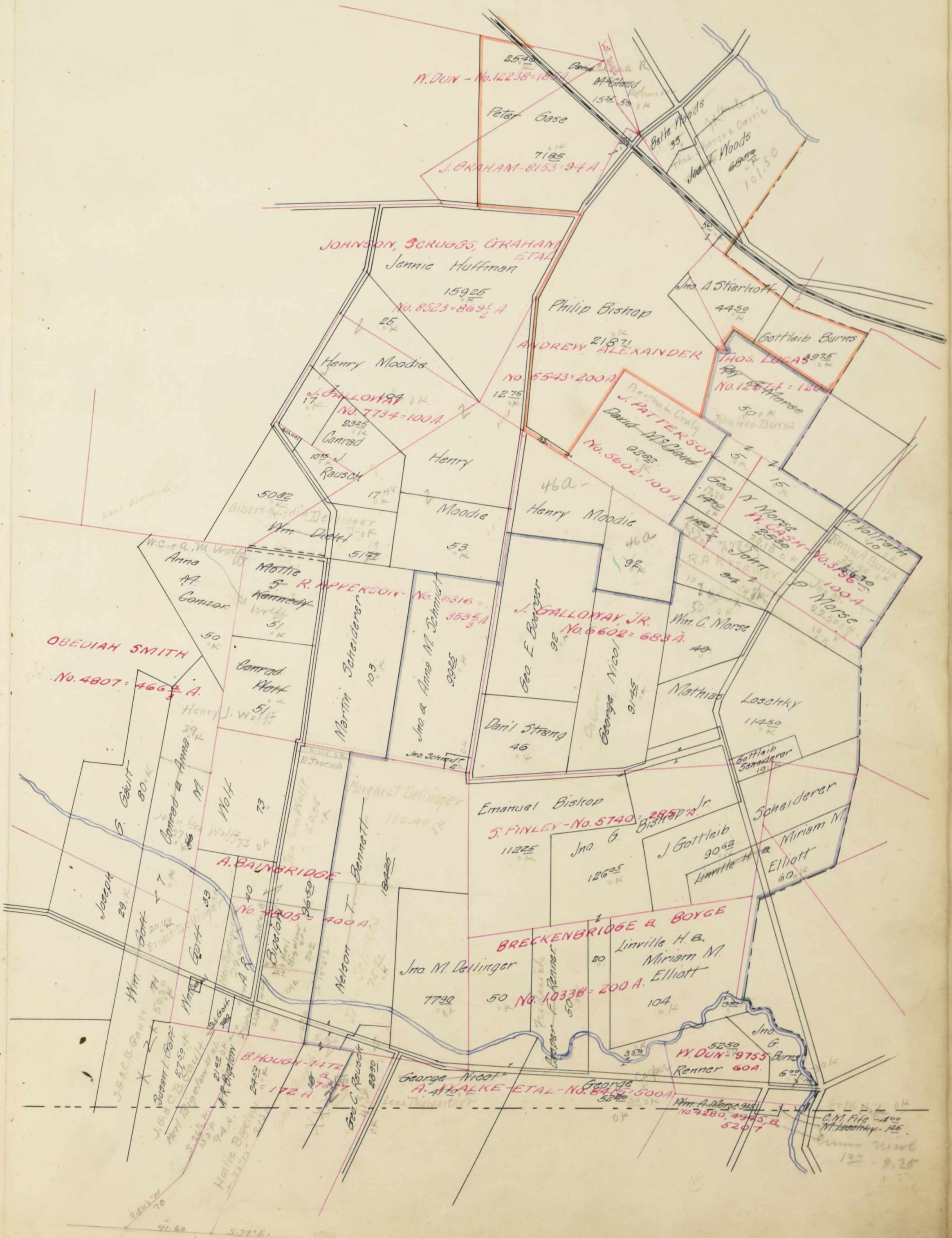


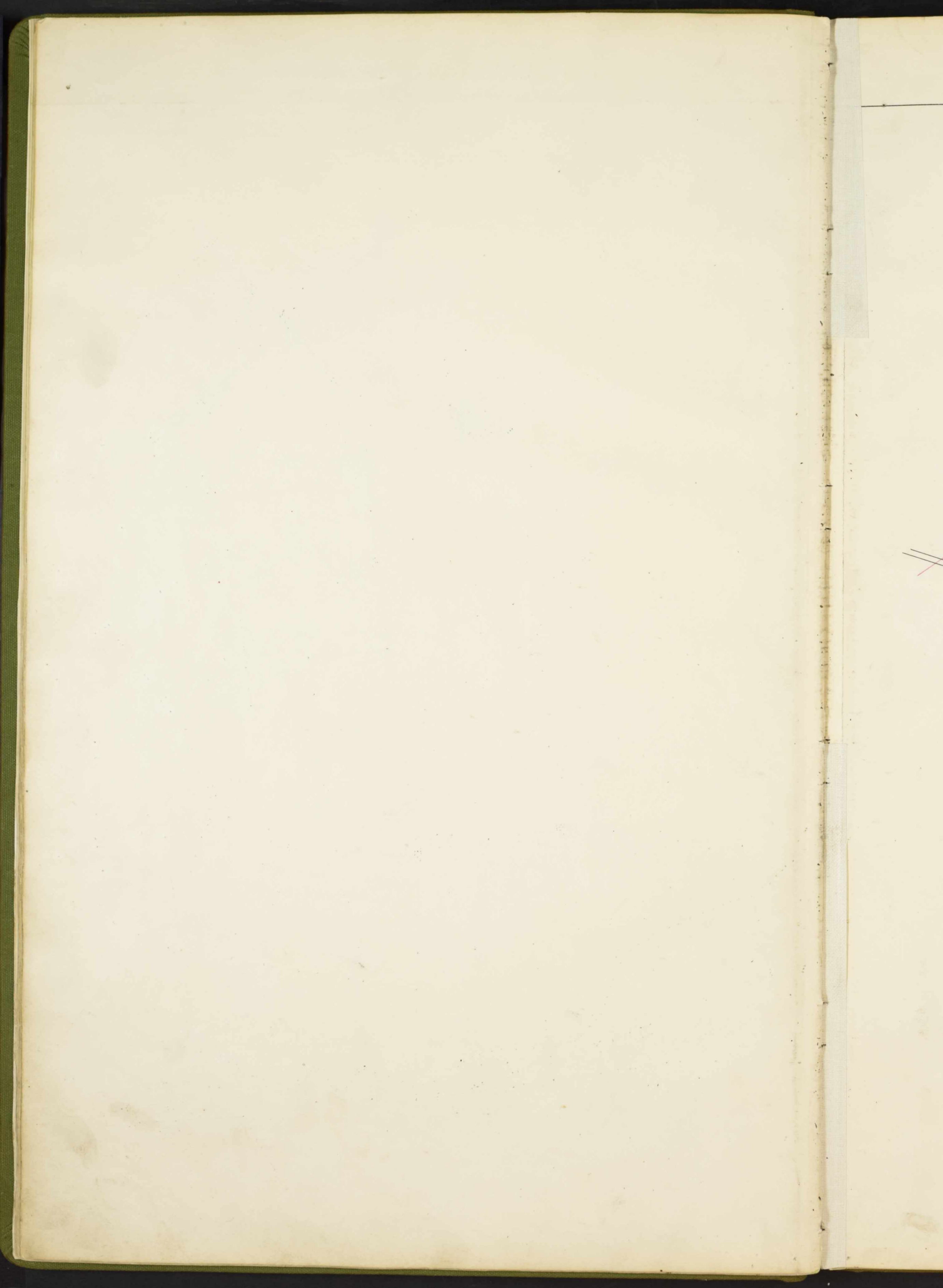
SURVEY No. 6543-12674-5602-3196-

6602-6316-4805-5740-10338.

SCALE, 80 POLES TO AN INCH.

Darby Sch. Dist.
Chickery Sch. Dist.





SCALE, 80 POLES TO AN INCH.



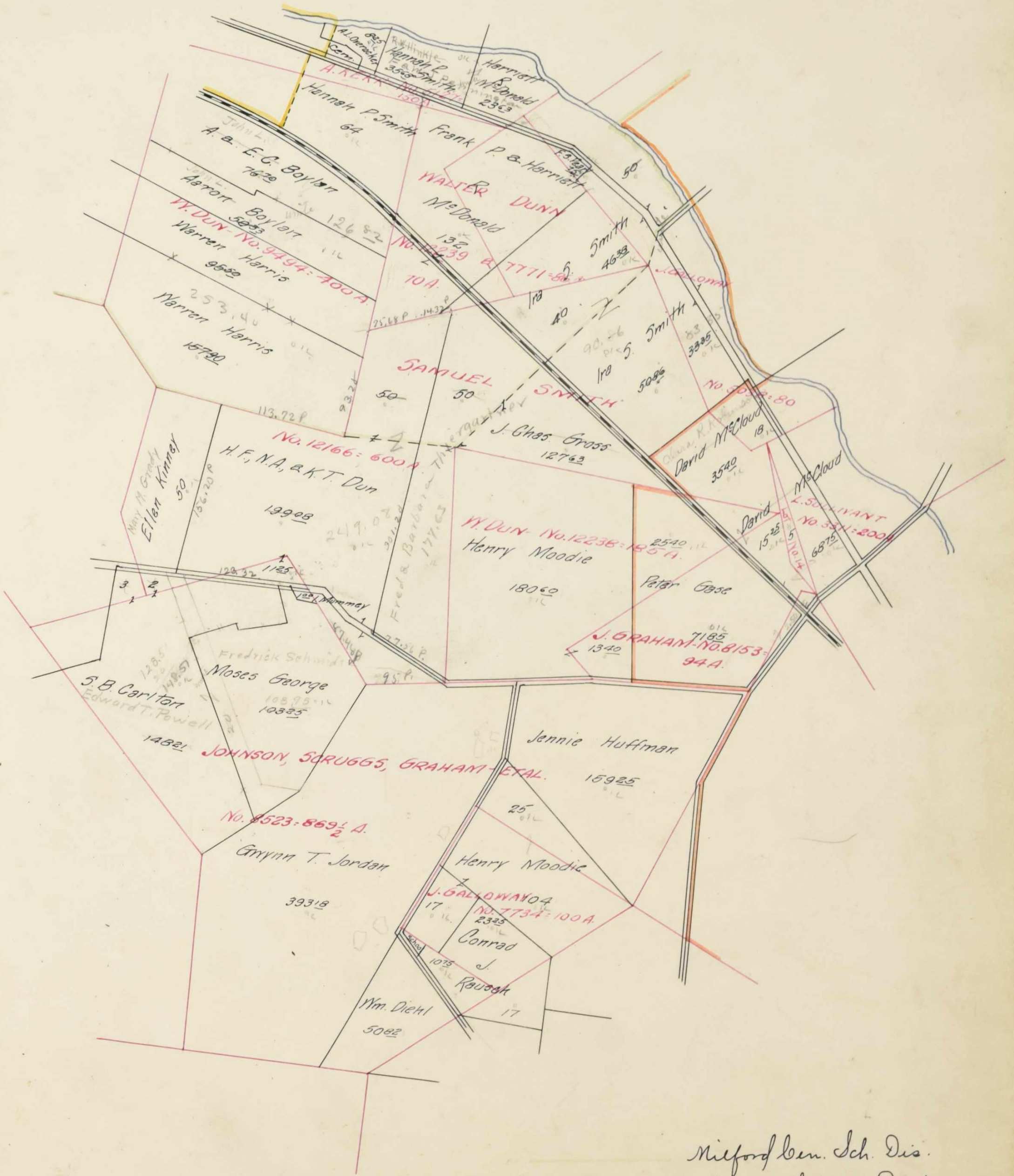
— Darby Sch. Dist.
 — Milford Cen. Sch. Dist.

1225
1225
650

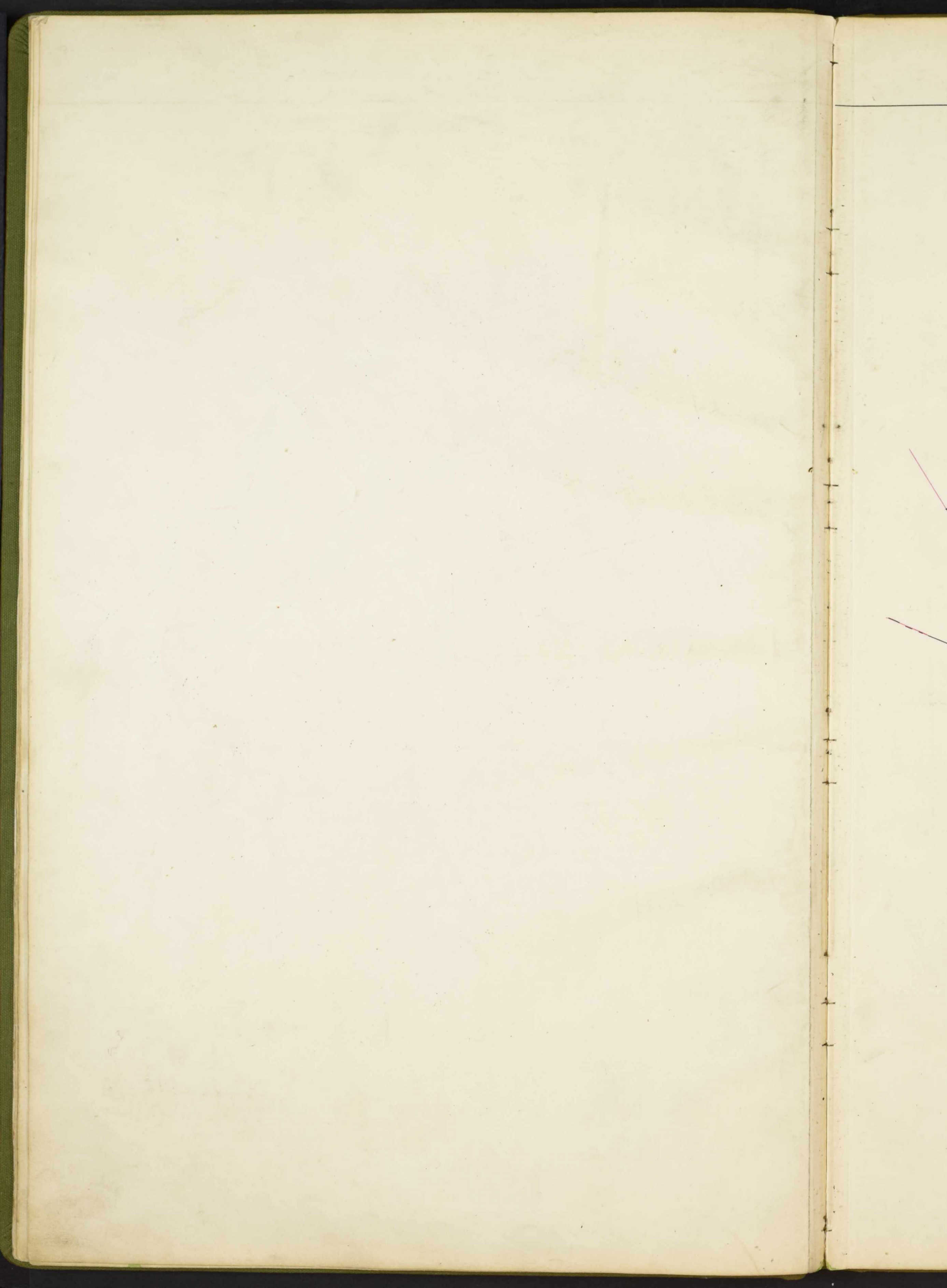
SURVEY No. 7771-12239-

12166-12238-8153-8523-7734.

SCALE, 80 POLES TO AN INCH.



Milford Cen. Sch. Dis.
 Darby School. Dist.

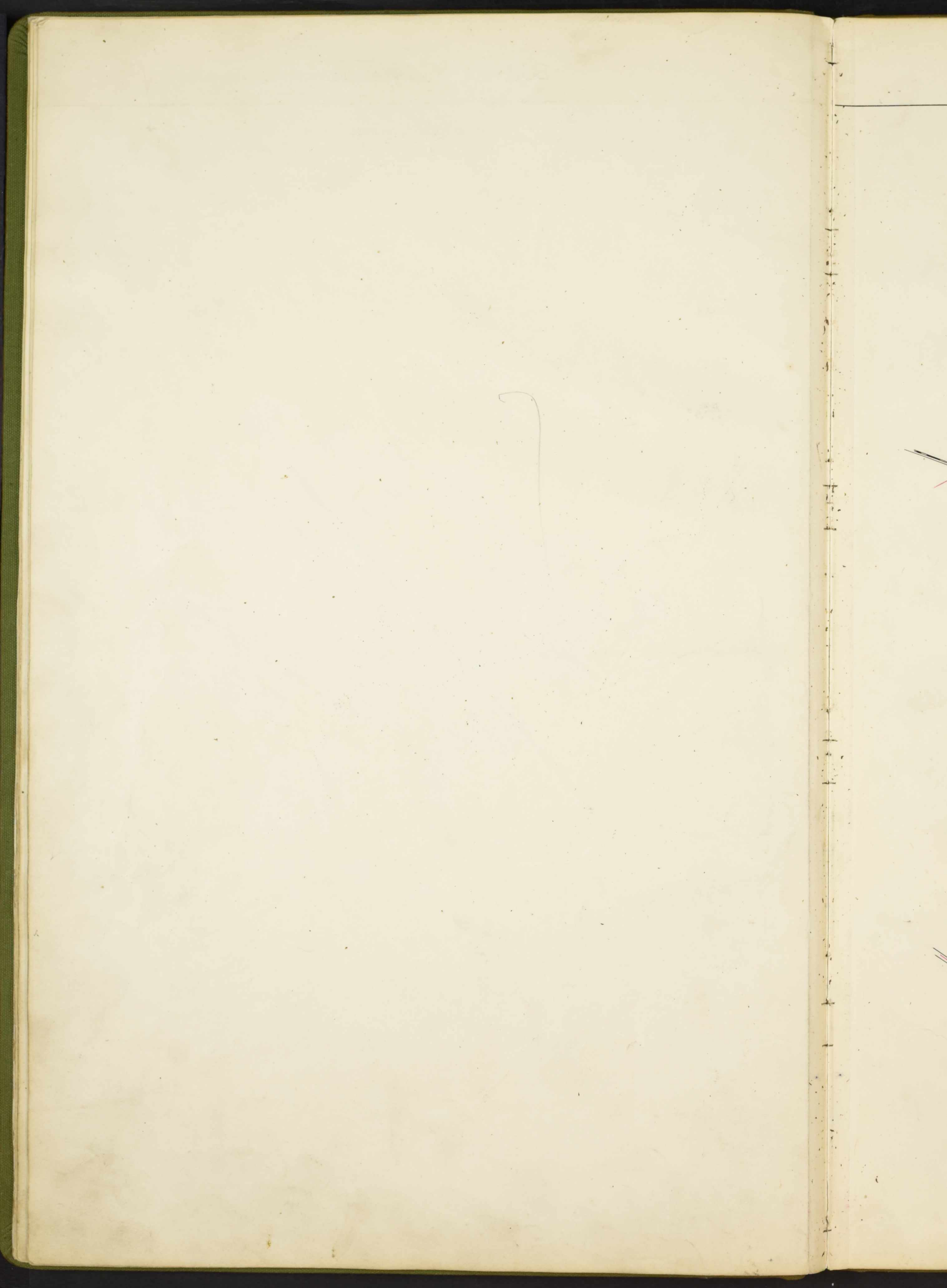


SURVEY No. 3459-5746-14192-12349-4071.

SCALE, 80 POLES TO AN INCH.



Milford Com. Sch. Dist.



SURVEY No. 4278

SCALE, 80 POLES TO AN INCH.



George Good 213

Amy C. Gabriel 150

James Gabriel

Elizabeth & Emma R. Good 125

Norman M. Mitchell 2325

Wilson S. Davis 133

Edward P. Smith

Joseph H. Davis 105

W.C. Fullington & Aaron Boylan

John Kreamer 218

Lettie M. Coe 56-50

Joe H. Davis 5225

John & John H.

Henry & Mayge K. Kaufman 93

Michael Sheehy

Frank C. Fullington

Michael M. Connor

John Connor

Arthur Child

John Kreamer

John Kreamer

John Kreamer

John Kreamer

John Kreamer

John Kreamer

John Kreamer

John Kreamer

John Kreamer

John Kreamer

John Kreamer

John Kreamer

John Kreamer

John Kreamer

John Kreamer

John Kreamer

John Kreamer

John Kreamer

John Kreamer

John Kreamer

John Kreamer

John Kreamer

John Kreamer

John Kreamer

John Kreamer

John Kreamer

John Kreamer

John Kreamer

John Kreamer

John Kreamer

John Kreamer

John Kreamer

John Kreamer

John Kreamer

John Kreamer

John Kreamer

John Kreamer

John Kreamer

John Kreamer

John Kreamer

John Kreamer

John Kreamer

John Kreamer

John Kreamer

John Kreamer

John Kreamer

John Kreamer

John Kreamer

John Kreamer

John Kreamer

John Kreamer

John Kreamer

John Kreamer

John Kreamer

John Kreamer

John Kreamer

John Kreamer

John Kreamer

John Kreamer

John Kreamer

John Kreamer

John Kreamer

John Kreamer

John Kreamer

John Kreamer

John Kreamer

John Kreamer

John Kreamer

John Kreamer

John Kreamer

John Kreamer

John Kreamer

John Kreamer

John Kreamer

John Kreamer

John Kreamer

John Kreamer

John Kreamer

John Kreamer

John Kreamer

John Kreamer

John Kreamer

John Kreamer

John Kreamer

John Kreamer

John Kreamer

John Kreamer

John Kreamer

John Kreamer

John Kreamer

John Kreamer

John Kreamer

John Kreamer

John Kreamer

John Kreamer

John Kreamer

John Kreamer

John Kreamer

John Kreamer

John Kreamer

John Kreamer

John Kreamer

John Kreamer

John Kreamer

John Kreamer

John Kreamer

John Kreamer

John Kreamer

John Kreamer

John Kreamer

John Kreamer

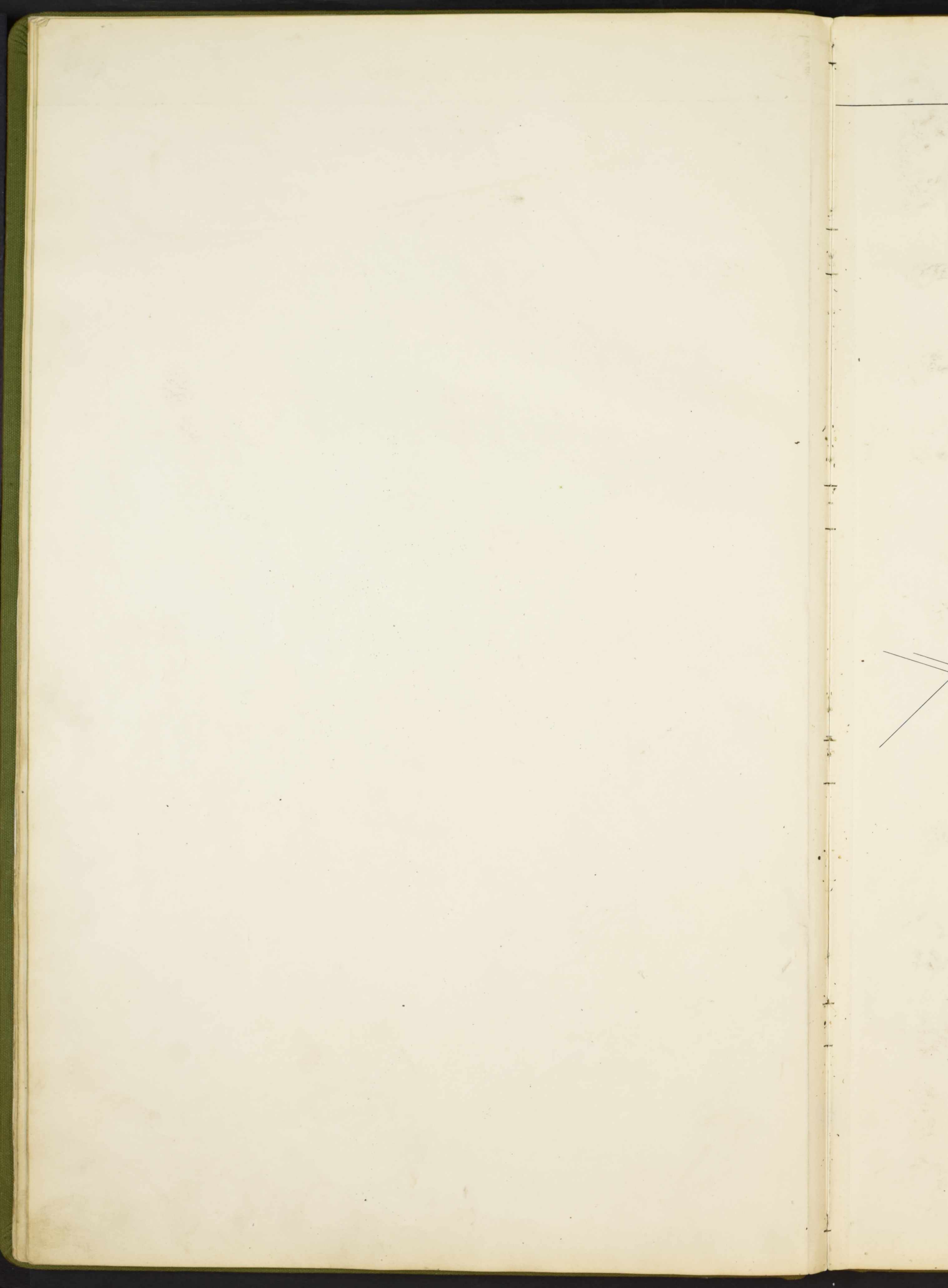
John Kreamer

John Kreamer

John Kreamer

John Kreamer

John Kreamer

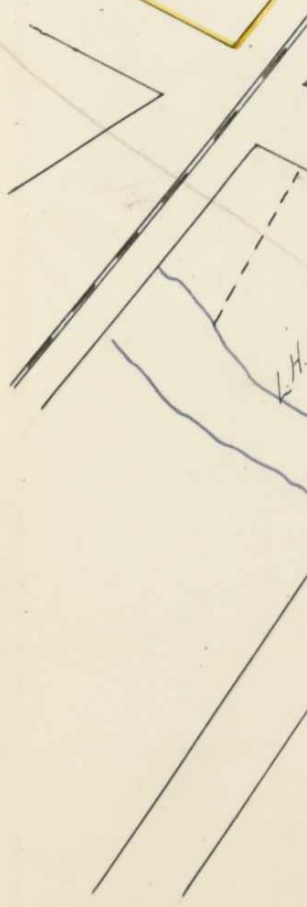


SCALE, 40 POLES TO AN INCH.



Alice J. Connor	2.31
" " "	4.65
" " "	8.70

M.J. Thompson
52
Thomas 5th



TREAGLES

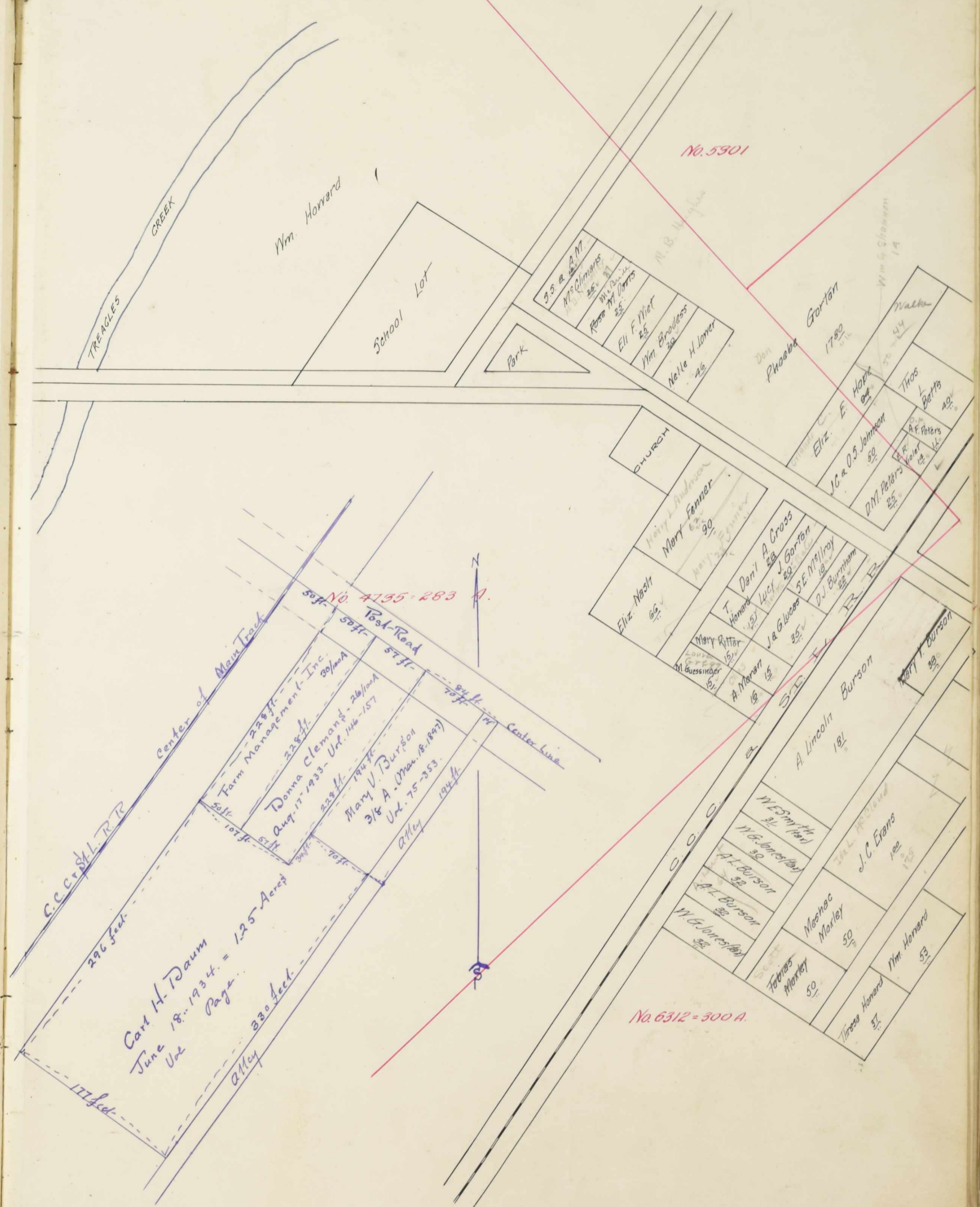
C.C.C. & S.L. R.R.

296 feet

Cart
Jun

177 feet

SCALE, 10 POLES TO AN INCH.

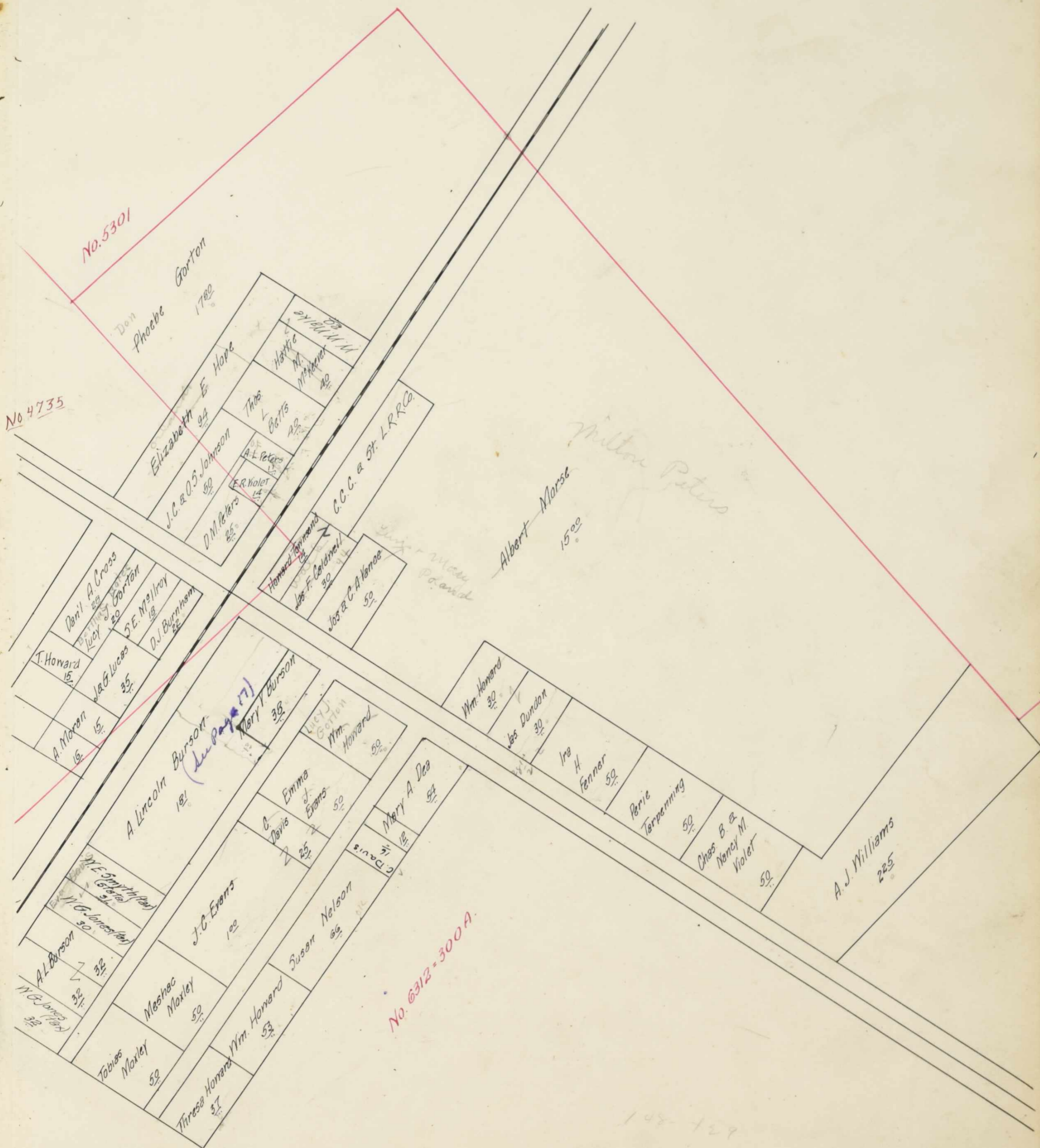


No. 5301

No 4735



SCALE, 10 POLES TO AN INCH.



No. 5301

No. 4735

No. 6312-300A

Albert Morse 15.00

Milton Peters

A.J. Williams 225

108-129

1500

IN WHOSE NAME ASSESSED	No. of Entry	No. ACRES LAND CLASSIFIED						TOTAL ACRES		Value per Acre Excluding Buildings		VALUE OF ALL BUILDINGS					Total Value Lands and Buildings		Changed by County Board of Equalization		Total Value as Equalized by County Board	Deduct Value Roads	Balance	Changed by State Board		Total Dup. Value as Equalized	Plat Page	TRANSFERRED TO	DATE TRANSFERRED	DUP. OF WHAT YEAR					REMARKS			
		Arable and Plow Land		Meadow and Pasture Land		Uncultivated and Wood Land		Acres	H.	Dolls.	Cts.	Dollars	Dollars	Dollars	Dollars	Dollars	Add	Deduct	Dollars	Acres				Dolls.	Dollars					Added	Deduct	Dollars	'09	'10		'11	'12	'13
		Acres	H.	Acres	H.	Acres	H.	Acres	H.	Dollars	Cts.	Dollars	Dollars	Dollars	Dollars	Dollars	Dollars	Dollars	Dollars	Dollars				Dollars	Dollars					Dollars	Dollars	Dollars	Page	Page		Page	Page	Page
<i>Dill Jm</i>	6316	28		23	67			51	67	75		3875	650		160	4685			1	80	4605	925		5530	7													
<i>Same</i>	8523	10		40	82			50	82	72		2659				2659			3/4	60	2599	521		3120	9													
<i>Dundon James</i>	6312			30				30	100			30	600		200	830					830	170		1000	18													
<i>Dun H. F., N. F. & R. F.</i>	8523			11	25			11	25	75		844				844					844	156		940	9													
<i>Same</i>	12163 12239	90		109	08			199	08	75		14931	500		200	15631			1 1/2	110	15321	3109		18630	9													
<i>Evins Phil</i>	4769			15				15	75			1125				1125					1/2	40	1085	215		1300	7											
<i>Evins Dorcas B.</i>	"			8	80			8	80	75		660	350			1010					1/2	40	970	190		1160	7											
<i>Evans Emma J.</i>	6312			50				50	80			40				40					40	10		50	18													
<i>Evans J. C.</i>	"			1				1	80			80		150	230						230	50		280	18													
<i>Evans J. W.</i>	4804			10	15			10	15	80		812				812					812	158		970	2													
<i>Evans Ira H.</i>	6312			50				50	100			50	350			400					400	80		480	18													
<i>Evans Mary</i>	4735			90				90	100			90	450		100	640					640	130		770	17													
<i>Ferry Patricia (Wife)</i>	7967	5		5				10	80			800				800					14	20	780	150		930	205											
<i>Fullington Walter C.</i>	4946	40		150				190	77			17630	800	250		600	19250				3/4	60	19220	3840		23060	5											
<i>Same</i>	7926	150		112				262	80			20960	350		750	22060					4 1/4	340	21720	7840		26060	5											
<i>Same</i>	4807	200		153				353	75			26475	400		150	27025							27025	5405		32450	7											
<i>Same</i>	5265	50		13				63	77			4851				4851							4851	969		5820	5											
<i>Halloway Emma J.</i>	4071 } 4278 }	35		76				111	42			4662	300		150	5112					5112	1018		6130	1011													
<i>Hare J. George</i>	26757 } 4278 }	35		178				213	44			9592	800		400	10792					10792	2158		12950	8111													
<i>Hault Cora B.</i>	7474	7		50				57	80			4560	200		100	4860					1	80	4780	960		5740	57											
<i>Hault J. Grant & Cora B.</i>	8414			8				8	80			640	500		400	1540					1/4	20	1520	300		1820	205											
<i>Hault Joseph C.</i>	"	30		70				100	80			8000				8000							8000	1600		9600	205											
<i>Same</i>	4807	10		70				80	75			6000				6000							6000	1200		7200	7											
<i>Same</i>	7474	10		19				29	80			2320	250			2570					3/4	60	2510	500		3010	507											
<i>George Mous.</i>	8523	40		63	25			103	25	75		7744	600		250	8594					1/4	10	8584	1716		10300	9											
<i>Hibson Lenora</i>	5746	50		174				224	38			8512	700	200		250	9662				3/4	150	9512	1898		11410	10											
<i>Hillispie Mary E. et al.</i>	7789 } 9020 }	40		66	99	3		109	98	73		7957				7957							7957	1573		9530	5											
<i>Same</i>	5381			45		6		51	69			3519	650	450		300	4919				1 1/2	100	4819	961		5780	2											
<i>Same</i>	6312			1	68			168	75			126				126							126	24		150	2											
<i>Hurin Sarah C. et al.</i>	"	30		43	30			73	30	75		5497	400		200	6097					1	70	6027	1213		7230	2											
<i>Blendenning Charlotte E.</i>	5754	20		21	76			41	76	76		3174				3174							3174	636		3810	3											
<i>Harry S. M. Mahill</i>		180		154	94	9		2430	94			168210	1150	900		4360	152325					1300	18125	36185		217210												

Transferred to Jno. Kreamer 3/10/11 143

Transferred to H. F. Johnson 9/13/11 153

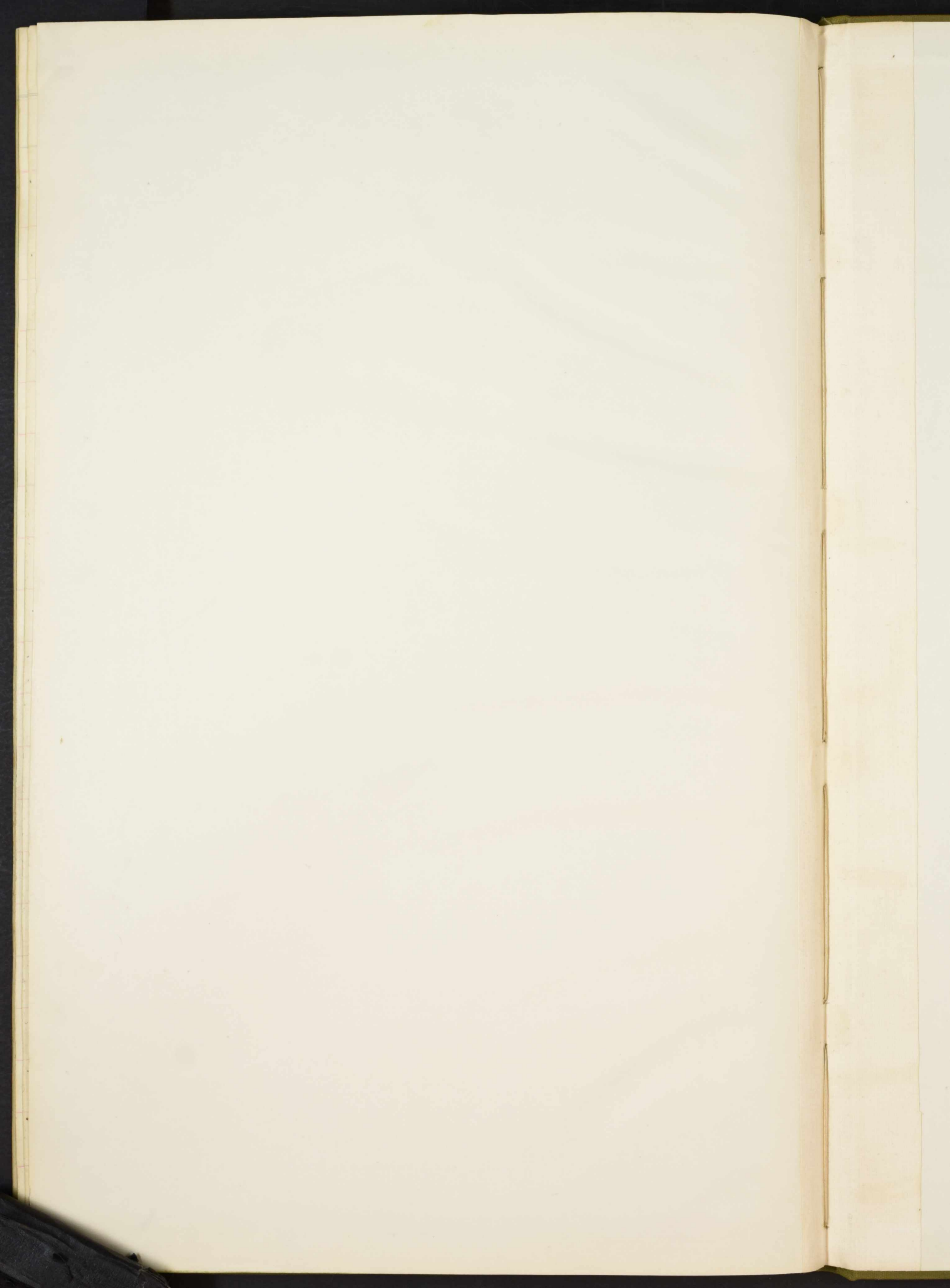
Transferred to H. B. & L. M. Baker 2/4/11 156

Union

IN WHOSE NAME ASSESSED	No. of Entry	No. ACRES LAND CLASSIFIED						TOTAL ACRES		Value per Acre Excluding Buildings		VALUE OF ALL BUILDINGS					Total Value Lands and Buildings	Changed by County Board of Equalization		Total Value as Equalized by County Board	Deduct Value Roads	Balance	Changed by State Board		Total Dup. Value as Equalized	Plat Page	TRANSFERRED TO	DATE TRANSFERRED	DUP. OF WHAT YEAR					REMARKS					
		Arable and Plow Land		Meadow and Pasture Land		Uncultivated and Wood Land		Acres	H.	Dolls.	Cts.	Dollars	Dollars	Dollars	Dollars	Dollars		Add	Deduct				Dollars	Acres					Dolls.	Dollars	Added	Deduct	Dollars		'09	'10	'11	'12	'13
		Acres	H.	Acres	H.	Acres	H.																																
Baldwin W. L.	2675	5		32				37	45	1665								1665			1/3	30	1635	325	1960	8	✓												
Bishop Philip	6543	50		168	71			218	71	77	16841	900		700	18441						3	220	18221	3639	21860	7	✓												
Same	3311			5	61			561	77	432					432								432	88	520	7	✓												
Bunsold Geo Peter	2675			23				23	48	1104	600			450	2154						1/3	30	2124	426	2550	8	✓												
Burns Gottlieb	12674	20		19	75			39	75	77	3061				3061								3061	609	3670	7	✓												
Case Peter	8153	11	85	60				71	85	77	5532	650		650	6832						1	80	6752	1348	8100	7	✓												
Same	12238	18		13	40			25	40	77	1802				1802						1/4	20	1782	358	2140	7	✓												
Same	6543			2	50			2	50	77	192				192						1/2	40	152	28	180	9	✓												
Chlor Edward	2675	43		17				60	42	2520	250			100	2870						1	40	2830	570	3400	8	✓												
Same	5038	4		6	15			10	15	45	457				457						1/2	20	437	83	520	8	✓												
McBlond David	3311	43	75	25				68	75	78	5362	900		250	6512						3 1/4	270	6242	1248	7490	7	✓												
Same	8152	11		4	25			15	25	78	1190				1190								1190	240	1430	7	✓												
Same	2408	5		5				5		78	390				390								390	80	470	7	✓												
Same	5038			18				18		75	1350				1350						1/2	40	1310	260	1570	7	✓												
Same	12166	8	40	27				35	40	75	2655				2655								2655	535	3190	7	✓												
Same	2675	30		14	50			44	50	50	2225	600		250	3075						2	100	2975	595	3570	8	✓												
Moxy Henry Pt.	2675	24		136	50			160	50	40	6420	200		150	6770						2	80	6690	1340	8030	8	✓												
Ohio Orchard Co. Inc.	2675	14		130				144		42	6048	300	180	300	6828						5	210	6618	1322	7940	8	✓												
Sturhoff John T.	12674	8		36	50			44	50	77	3426				3426								3426	684	4110	7	✓												
Strath John Henry	2675	24		88				112		42	4704	350		300	5354						1/2	20	5334	1066	6400	8	✓												
Woods Belle	3311 } 6543 }	15		18				33		78	2574				2574								2160	2414	486	2900	7	✓											
Woods Joseph T.	3311	22		46	50			68	50	78	5343	700		350	6393								2160	6233	1247	7480	7	✓											
Same	2675			6	50			6	50	44	286				286								50	20	266	54	320	8	✓										
Young Alphonzo	2675			118				118		42	5056				200	5256							24	90	5166	1134	6200	8	✓										
		351		1016	87			1367	87		80635	5450	180		3700	89965							1630	88,335	17665	106,000													

To be m. a. B. to meet 1/11

IN WHOSE NAME ASSESSED	No. of Entry	No. ACRES LAND CLASSIFIED						TOTAL ACRES		Value per Acre Excluding Buildings		VALUE OF ALL BUILDINGS					Total Value Lands and Buildings	Changed by County Board of Equalization		Total Value as Equalized by County Board	Deduct Value Roads	Balance	Changed by State Board		Total Dup. Value as Equalized	Plat Page	TRANSFERRED TO	DATE TRANSFERRED	DUP. OF WHAT YEAR					REMARKS	
		Arable and Plow Land		Meadow and Pasture Land		Uncultivated and Wood Land		Acres	H.	Dollars	Cts.	Dollars	Dollars	Dollars	Dollars	Dollars		Add	Deduct				Dollars	Added					Deduct	Dollars	'09	'10	'11		'12
		Acres	H.	Acres	H.	Acres	H.	Acres	H.	Dollars	Cts.	Dollars	Dollars	Dollars	Dollars	Dollars	Dollars	Dollars	Dollars	Dollars	Dollars	Dollars	Dollars	Page	Page	Page	Page	Page							
Blake Emma E.	14278	2		775		9	75	42		409	500			909					1	40	869	171			1040	13	✓								
Boylan Aaron	19494	25		25	33	50	33	82		4127				4127					3	30	4077	813			4910	6	✓								
Boylan A. & E. C.	19494 } 9591 }	40		36	70	76	70	85		6520				6520					3	30	6490	1300			7990	6	✓	Pat. E. K. Bunch.	7/21/11		153				
Butler Hugh	14278			2	60	2	60	60		136	200			356					1	8	346	64			410	12	✓								
Butler Mary	"			3	38	3	38	60		203				203					1	8	193	37			230	12	✓								
Boa Lottie M.	14278	40		16	50	56	50	75		4237	450		250	4937					1	2	4897	983			5880	11	✓								
Bonner Anna M.	"			2	31	2	31	65		150				150							100	30			180	12	✓	Gas. Bonner	4/1/10		154				
Same	"			4	65	4	65	65		302				302					1	8	292	58			350	12	✓	Gas. Bonner.	1/27/11		154				
Bonner Catharine	15127 } 4278 }	12		10	30	22	30	55		1226	700			1926					1	2	1896	874			2270	12	✓								
Bonner Michael M.	"	15		13	75	28	75	55		1581				1581					1	2	1551	309			1860	12	✓								
Davis J. F.	2675	10		30	25	40	25	42		1690	400		180	2270					3	4	2270	450			2690	8	✓	Alfred Huchenbahn.	1/3/10		154				
Davis Joseph H.	14278	15		37	25	52	25	75		3919				3919					3	4	3859	771			4630	11	✓								
Same	"	15		90		105		70		7350	900		300	8550					3	1	240	8310	1660			9970	11	✓							
Davis Mary E.	"	2		6	66	8	66	70		607	400			1007					1	4	20	987	193			1180	12	✓							
Davis Wilson S.	"	35		98		133		75		9975	500		250	10725					1	2	110	10615	2125			12740	11	✓	Bessie J. Buffington	1/2/10		153			
De Bolt Alva	"			4	30	4	30	70		301				301					1	2	40	261	49			310	12	✓							
De Bolt Alva S.	"			1	25	1	25	70		87				87							87	13			100	12	✓								
Danner Alvin	"	6		6		12		60		720			150	870					1	4	20	850	170			1020	12	✓							
Dunn N. A. & H. S. & H. T.	12106 } 12239 }	50				50		75		3750				3750							3750	750			4500	9	✓								
Finley James E.	14278	10		21	19	31	19	50		1560				1560					3	4	50	1510	500			1810	11	✓							
Fletcher Albert & Munnie	"			8	20	8	20	60		492			100	592					1	2	30	562	108			670	12	✓	W. B. Richards	7/3/10		155			
Fullington Frank B.	"	15		12	85	27	85	50		1392				1392					1	50	1342	268			1610	11	✓								
Fullington Walter C. & Aaron Boylan	"	70		148		218		73		15914	650		1200	17764					1	2	40	1724	3546			21270	11	✓	John Kreamer.	7/8/11		161			
Gabriel Amy E.	14278	25		125		150		42		6300	400	250	150	7100					1	2	60	7040	1410			8450	11	✓	Albert Burnham.	7/3/10		153			
Gabriel James	"	35		90		125		42		5250	350		250	5850					1	2	60	5790	1160			6950	11	✓							
Gabriel James S.	"	10		15		25		42		1050				1050					3	4	30	1020	200			1220	11	✓							
Geer Emma R.	"			55	25	55	25	45		2486				2486					1	2	30	2456	494			2950	11	✓	Frank Pennington	3/6/10		153			
Same	"			2		2		50		100	300			400					1	8	10	390	80			470	13	✓	Frank Pennington	3/6/10		143			
Green J. Chas.	12239 } 12166 }	20		30		50		76		3800				3800							3800	760			4560	✓									
		458		96		897		51		1356		47		85654		5750		250		2820		94484													
																				410		93374		18646		112820									



**UNION TP.
UNION COUNTY
1910**