

**DOVER TP.
UNION COUNTY
1910**

DOVER

1910

**DOVER TP.
UNION COUNTY
1910**

UNION

To

ITEMIZED

- 10 day c
- 15 day c
- 21 day c
- 25 day c
- 26 day c
- 27 day c
- 29 day c
- 31 day c
- 1 day c
- 16 day c
- 17 day c
- 18 day c
- 19 day c
- 20 day c
- 21 day c
- 24 day c
- 25 day c
- 26 day c
- 27 day c
- 28 day c
- 30 day c
- 31 day c
- 1 day c
- 2 day c
- 3 day c
- 4 day c
- 6 day c
- 7 day c
- 8 day c
- 9 day c
- 10 day c
- 11 day c
- 13 day c
- 14 day c
- 15 day c
- 16 day c
- 17 day c
- 18 day c
- 20 day c
- 21 day c
- 22 day c
- 23 day c
- 24 day c
- 25 day c
- 27 day c
- 28 day c
- 29 day c
- 30 day c
- day c
- day c

Dover

APPRAISER'S ACCOUNT.

UNION COUNTY

To *M. J. Cody*

Land Appraiser of *Dover Township* Dr.

ITEMIZED STATEMENT OF DAYS ACTUALLY EMPLOYED IN MAKING SAID APPRAISEMENT.	
10 day of <i>January</i>	day of
15 day of	day of
21 day of	day of
25 day of	day of
26 day of	day of
27 day of	day of
29 day of	day of
31 day of	day of
1 day of <i>Feb</i>	day of
16 day of <i>May</i>	day of
17 day of	day of
18 day of	day of
19 day of	day of
20 day of	day of
21 day of	day of
24 day of	day of
25 day of	day of
26 day of	day of
27 day of	day of
28 day of	day of
30 day of	day of
31 day of	day of
1 day of <i>June</i>	day of
2 day of	day of
3 day of	day of
4 day of	day of
6 day of	day of
7 day of	day of
8 day of	day of
9 day of	day of
10 day of	day of
11 day of	day of
13 day of	day of
14 day of	day of
15 day of	day of
16 day of	day of
17 day of	day of
18 day of	day of
20 day of	day of
21 day of	day of
22 day of	day of
23 day of	day of
24 day of	day of
25 day of	day of
27 day of	day of
28 day of	day of
29 day of	day of
30 day of	day of
31 day of	day of

For services rendered in appraising the Real Estate of said
Township, for the year 1910, occupying *48*
 days, between the *10* day of *January*, and the
30 day of *June*, at \$ *3.50* per day,
 \$ *168.00*.

And the said *M. J. Cody*
 being duly sworn, solemnly declares that the number of days herein
 stated were necessarily occupied in the appraisement of said
Township, and that this account is in all respects
 just and true.

(Signed) *M. J. Cody* Appraiser.

Sworn to and subscribed before me, this *8th* day of
June, 1910.

(Signed) *Arthur D. Long* Deputy Auditor of said County.

The above account is hereby approved this *11th* day of
July, 1910.

L. M. Cline
E. J. Jones
A. R. Keith } Commissioners,
 Union County,
 Ohio.

Received _____, 1910, of the Auditor of
 Union County, an order on the Treasurer of said County, for
 _____ Dollars
 and _____ Cents, in full of the above account.

(Signed) _____ Appraiser.

\$

STATEMENT OF SURVEYS.

No. OF ORIGINAL SURVEY	Original Quantity	ORIGINAL PROPRIETORS	WATER COURSE	PAGE	No. OF OR
1307	1000	Robert Dandridge	Mill Creek.	6	
3007	1087	John Graham	Mill Creek	6	
3355	372	Edward Dowse	Mill Creek	4	
3956	1000	John White	Mill Creek	3	
4065	1000	John Norton	Mill Creek	3	
5135	1000	John Pride	Mill Creek.	5	
5497	1358	Robert Means	Blues Creek	4	
5498	1358	Robert Means	Blues Creek	2	
5499	1358	Robert Means	Blues Creek	7	
5501	800	Robert Means	Mill Creek	6	
5502	800	Robert Means.	Mill Creek	2	
5504	428	Robert Means ^{and} John Stokely	Mill Creek.	4	
5505	255	Robert Means.	Blues Creek.	2	
5505	200	Selly Onions	Blues Creek.	2	
5869	1000	William B. Bunting (Reps)	Sciota	7	
9028.	1000	John Hunt.	Mill Creek.	5	

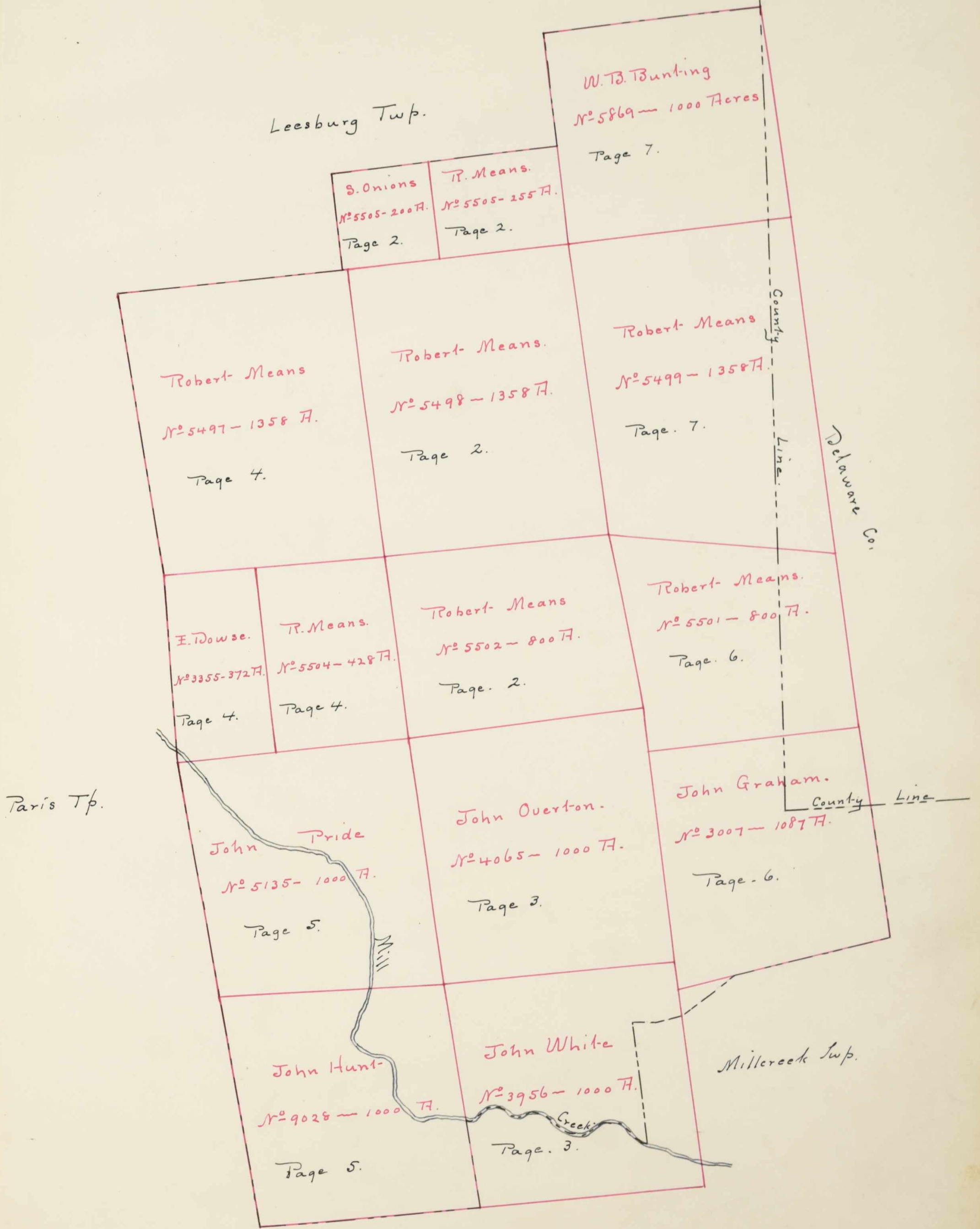
STATEMENT OF SURVEYS.

PAGE	No. OF ORIGINAL SURVEY	Original Quantity	ORIGINAL PROPRIETORS	WATER COURSE	PAGE
6					
6					
4					
3					
3					
5					
4					
2					
7					
6					
2					
4					
2					
2					
7					
5					

Paris T^p.

SURVEY No.

SCALE, 80 POLES TO AN INCH.

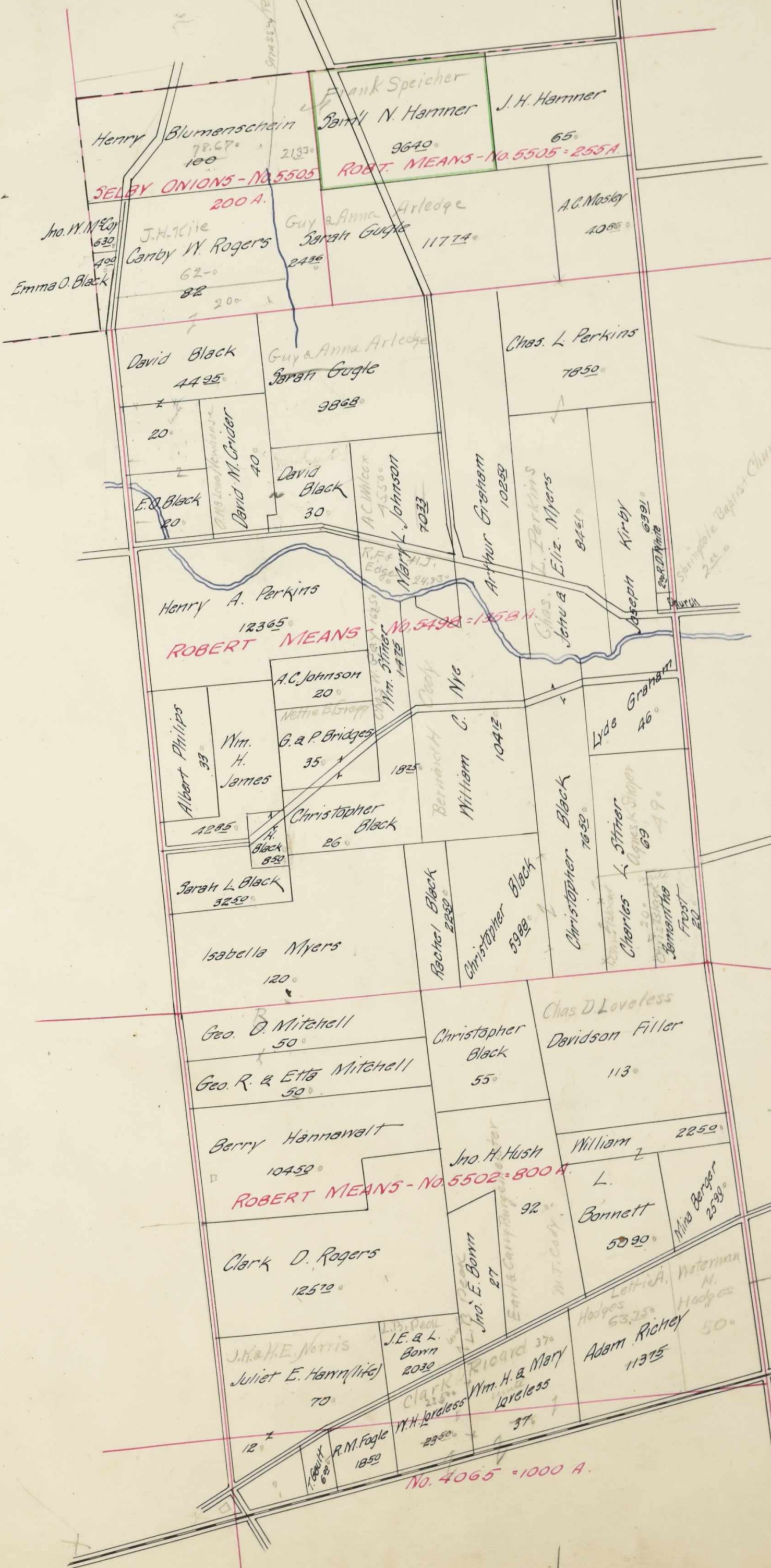


No. 11.

Emma O. B.

SURVEY No. 5505-5505-5498-5502.

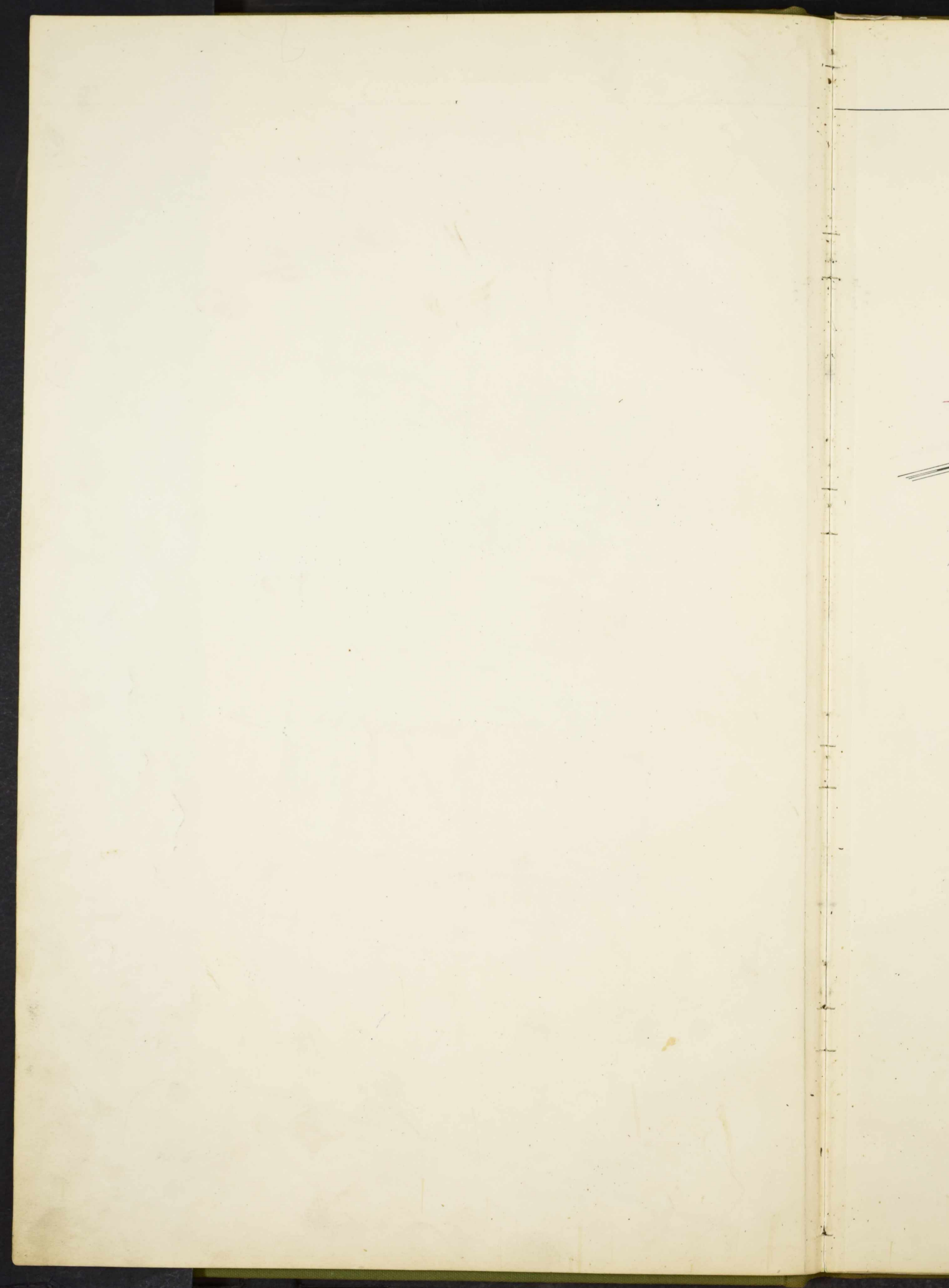
SCALE, 80 POLES TO AN INCH



76.50
46.00
122.50

Lees. Sch. Dist.

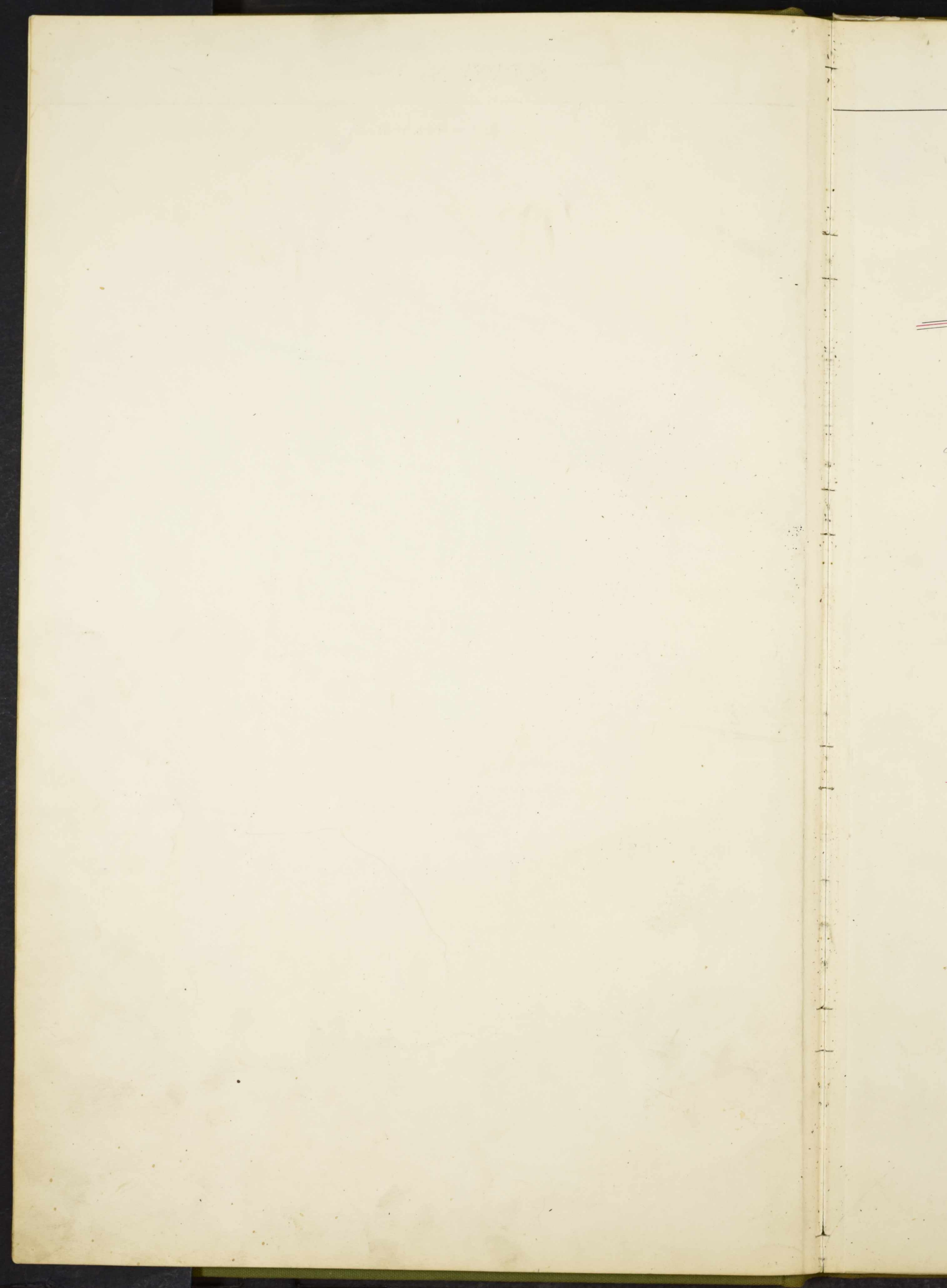
Should be Reversed
in



SURVEY No. 4065-3956.

SCALE, 80 POLES TO AN INCH.

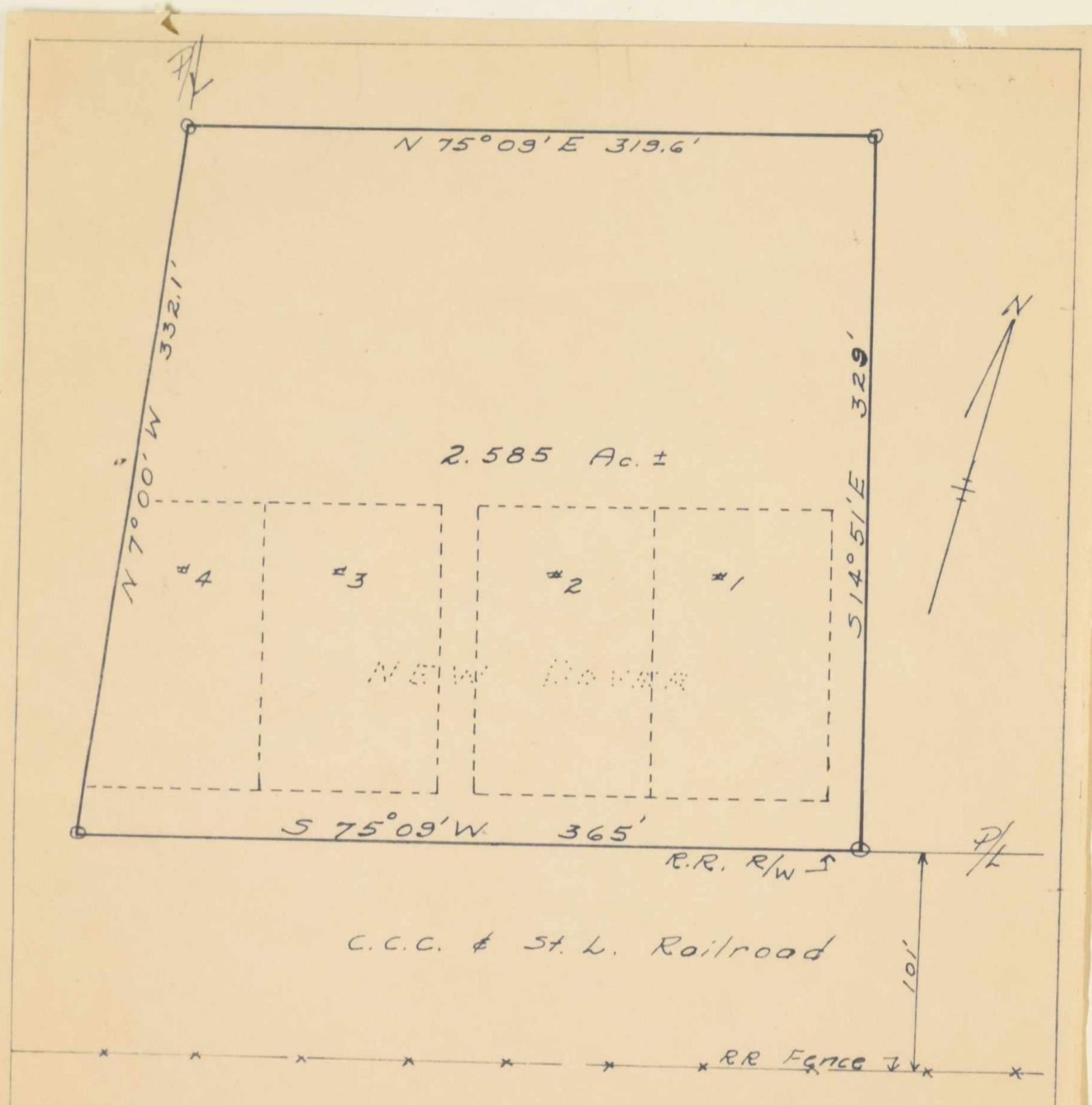




SURVEY No. 5497-3355-5504.

SCALE, 80 POLES TO AN INCH.

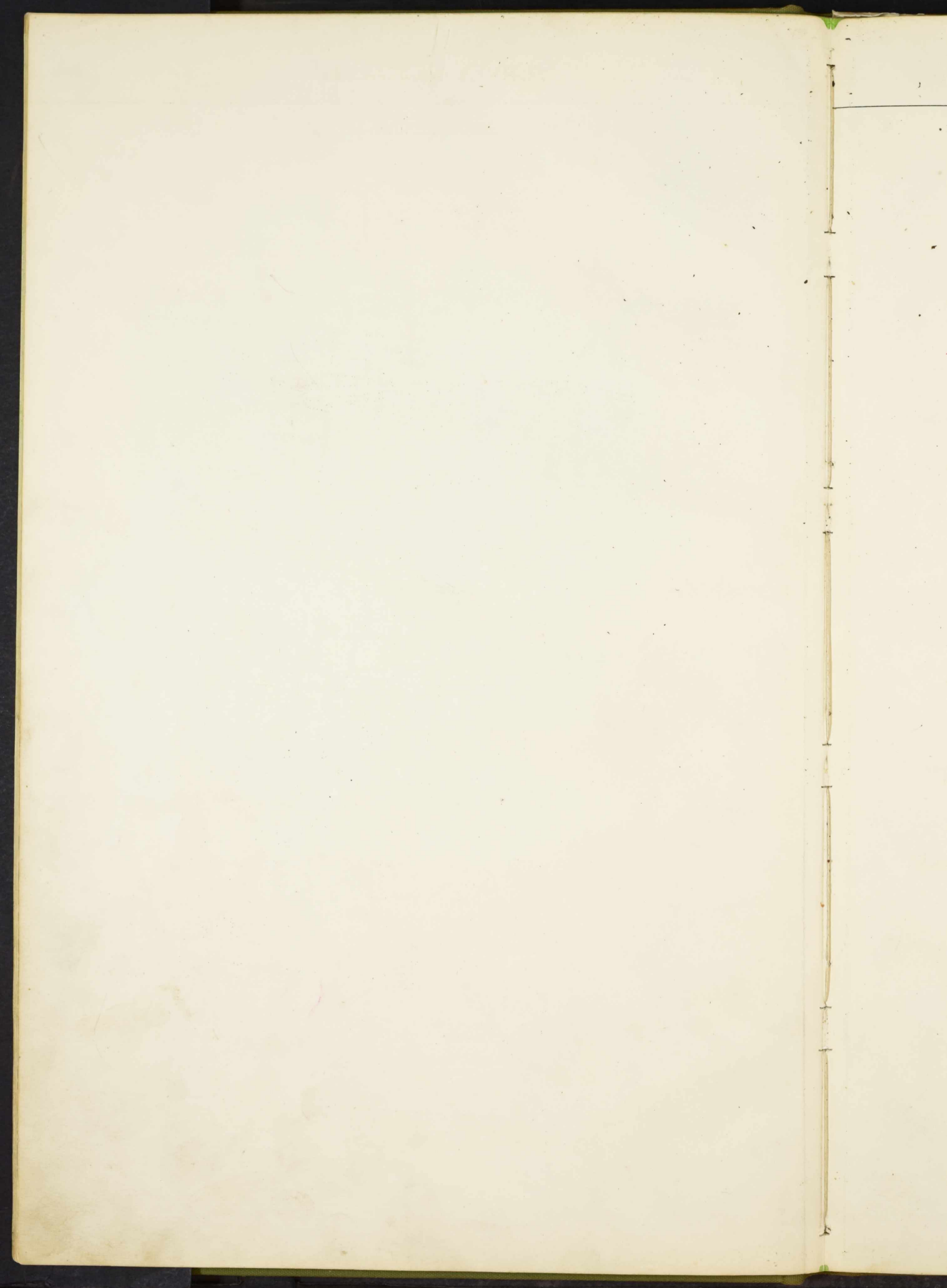




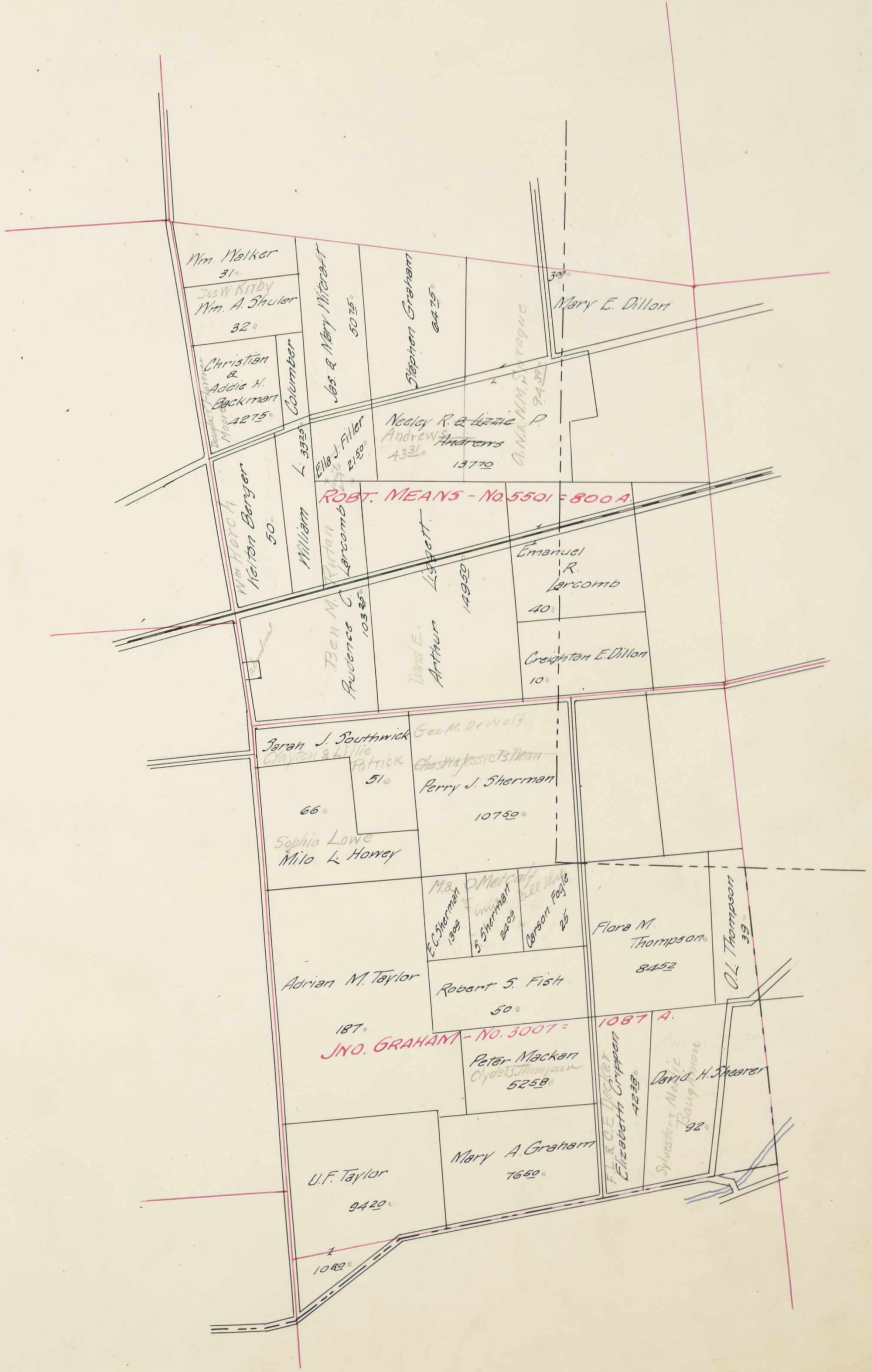
Survey for Everett Bump et al
 Dover Twp., V.M.S. # 5135 D.R. 192/71
 References D.R. 16/384 & Railroad Plans
 By J. Donald Hart, Reg. Surveyor # 3802
 November 11, 1965 --- Scale 1" = 60'
 o - iron pins
 Recorded S.R. Vol. 7, Page 199

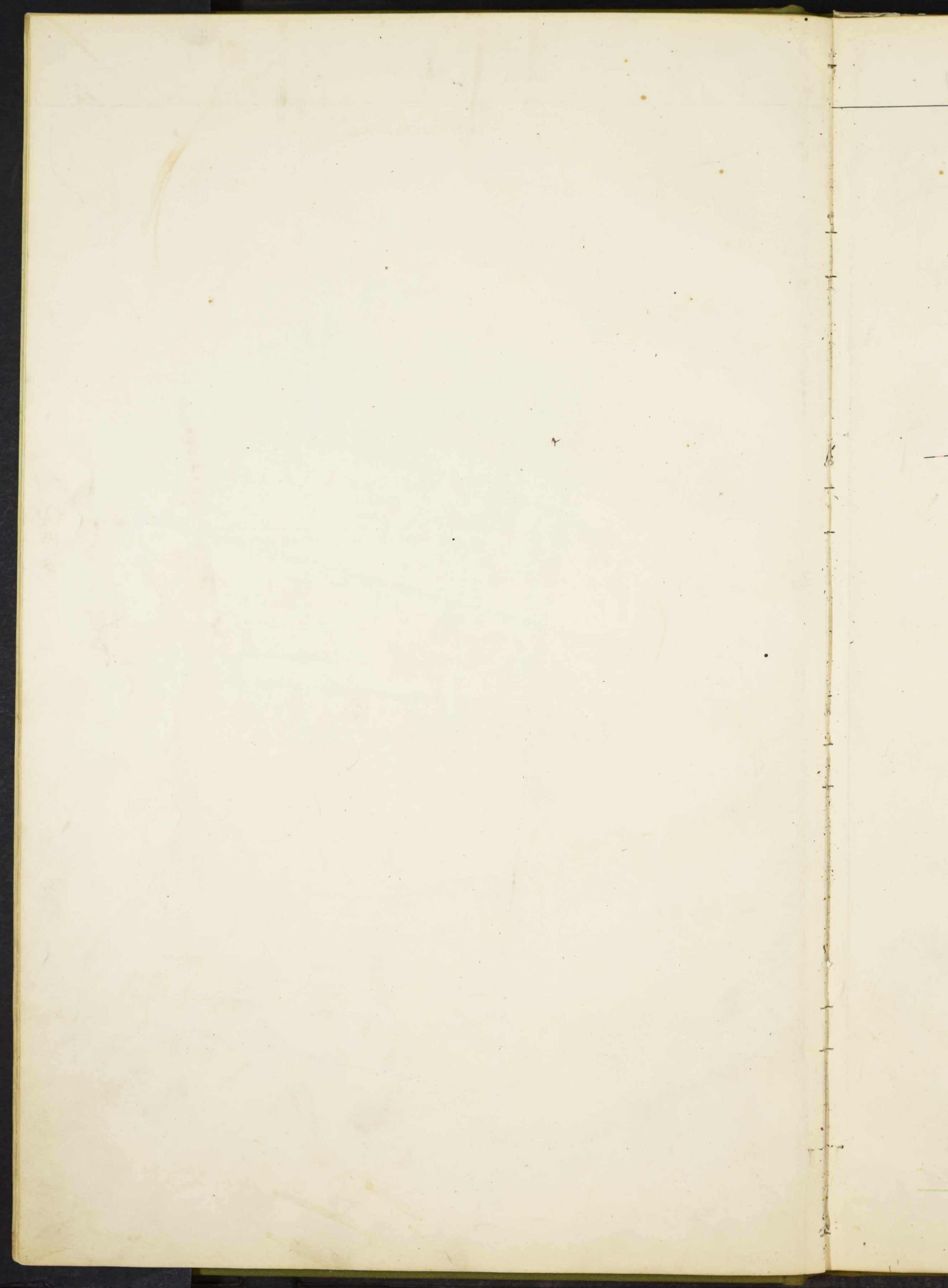
SCALE, 80 POLES TO AN INCH.





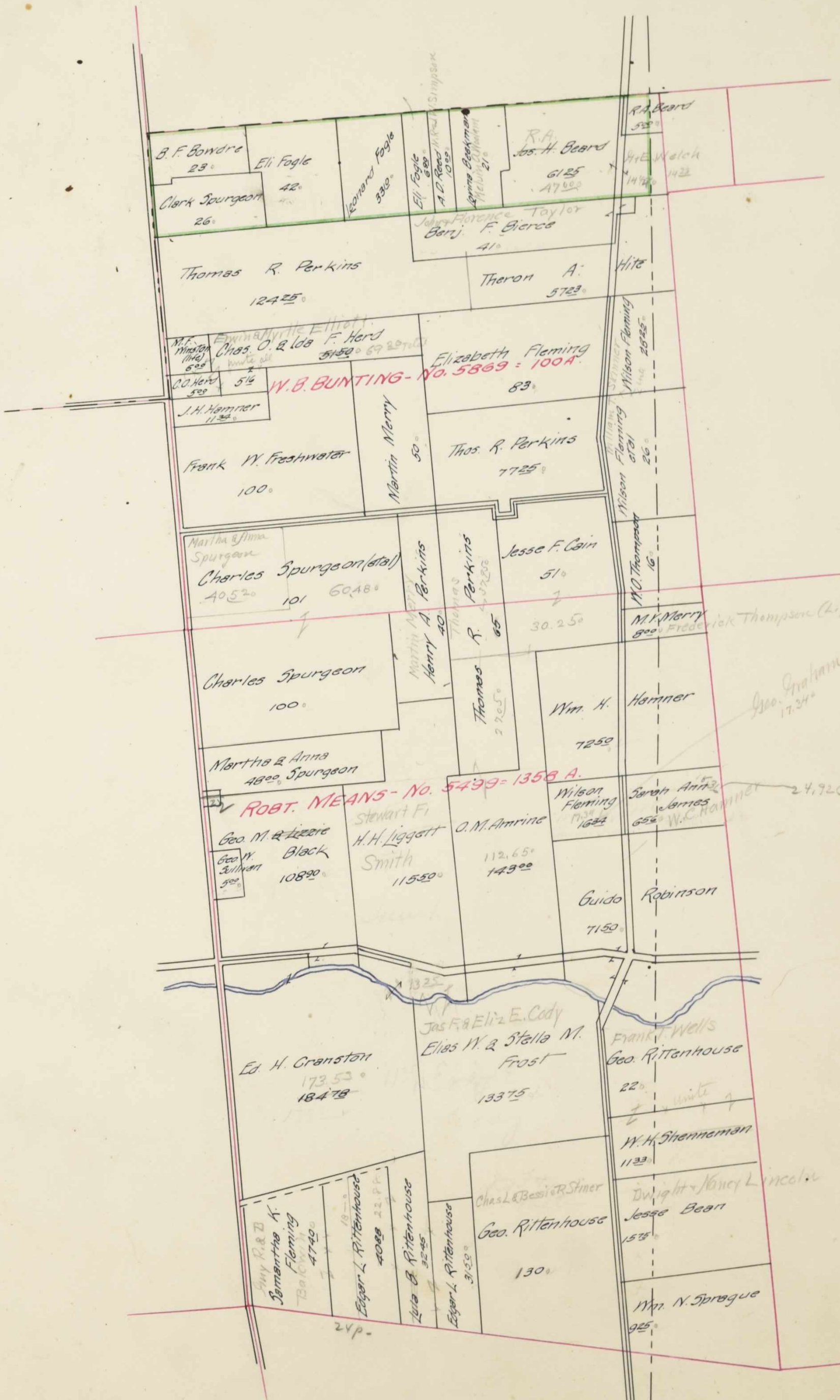
SCALE, 80 POLES TO AN INCH.





SURVEY No. 5869-5499.

SCALE, 80 POLES TO AN INCH.



Leesburg Sch. Dist.

SCALE, 10. POLES TO AN INCH.



J.K. & H.E. Norris
 Juliet E. Hann (life)
 12⁰⁰

David Black
 39⁰⁰

Jno. PRIDE
No. 5135 = 1000 A.

MARYSVILLE DOVER RAIL ROAD

DELaware GRAVEL ROAD

Thomas Gault
 6⁰⁰

John Gault
 36⁰⁰

Grace & Fuller
 2⁰⁰

Jonas Vining
 Thomas Gault
 6⁰⁰

C.C. Williams
 4⁰⁰

Mary L. Edelblute
 13⁰⁰

Millie Thompson
 4⁰⁰

Clark D. Rogers
 Jas. I. Myers
 15⁰⁰

JOHN OVERTON - No. 4065 = 1000 A.

John Gault
 13⁷⁵

Harold Denver Baker
 1⁰⁰

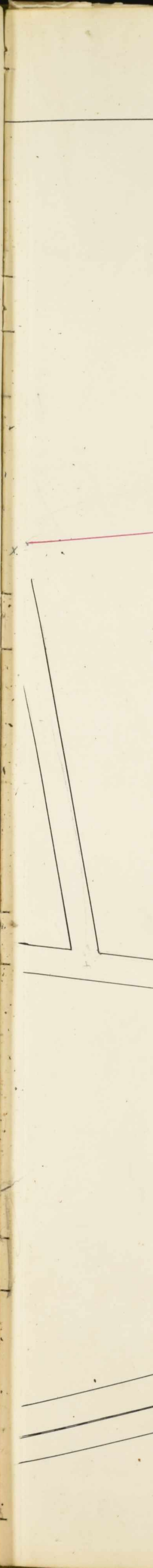
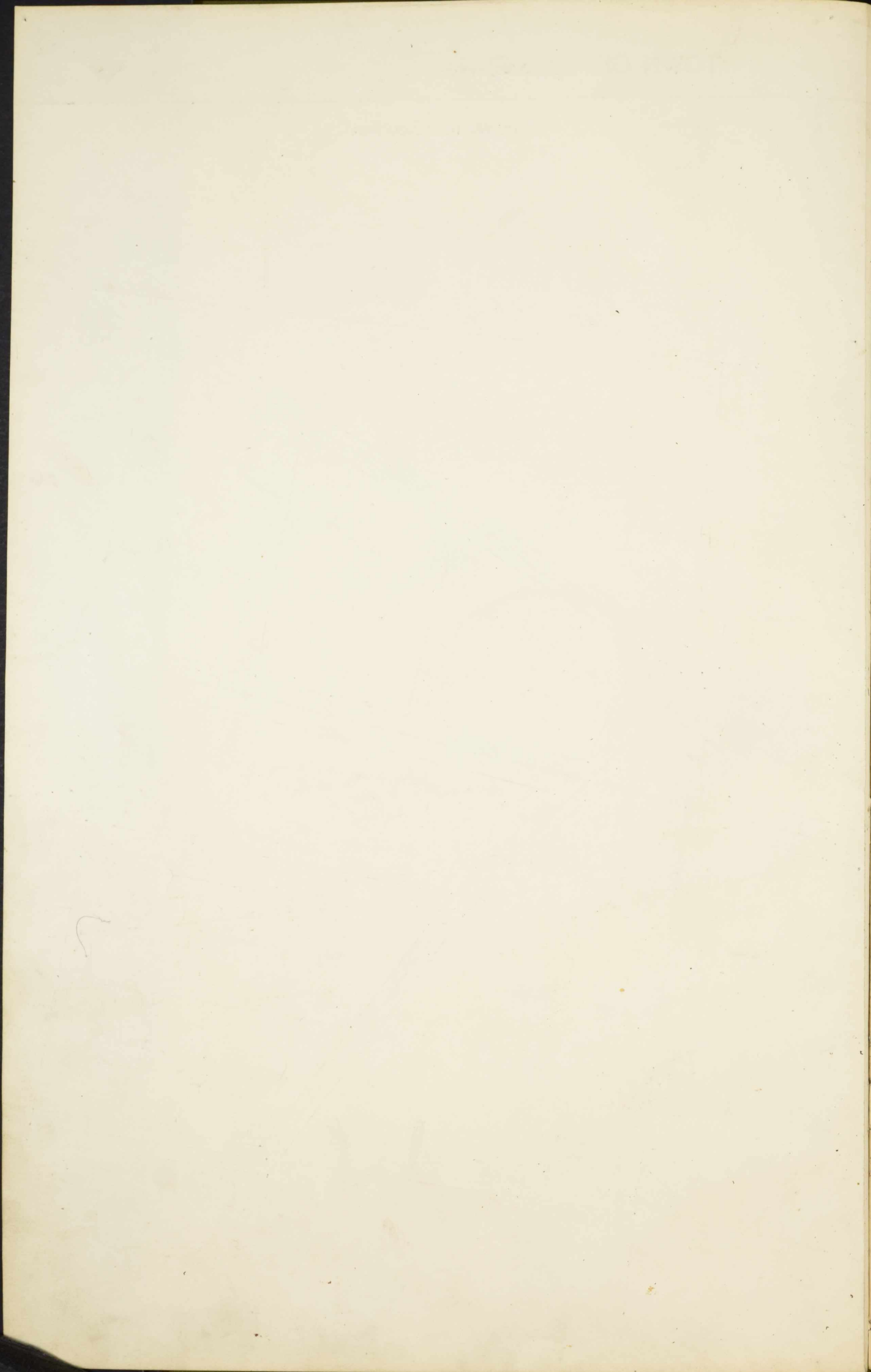
Mary L. Edelblute
 3⁷⁵

Samuel Hall (State)

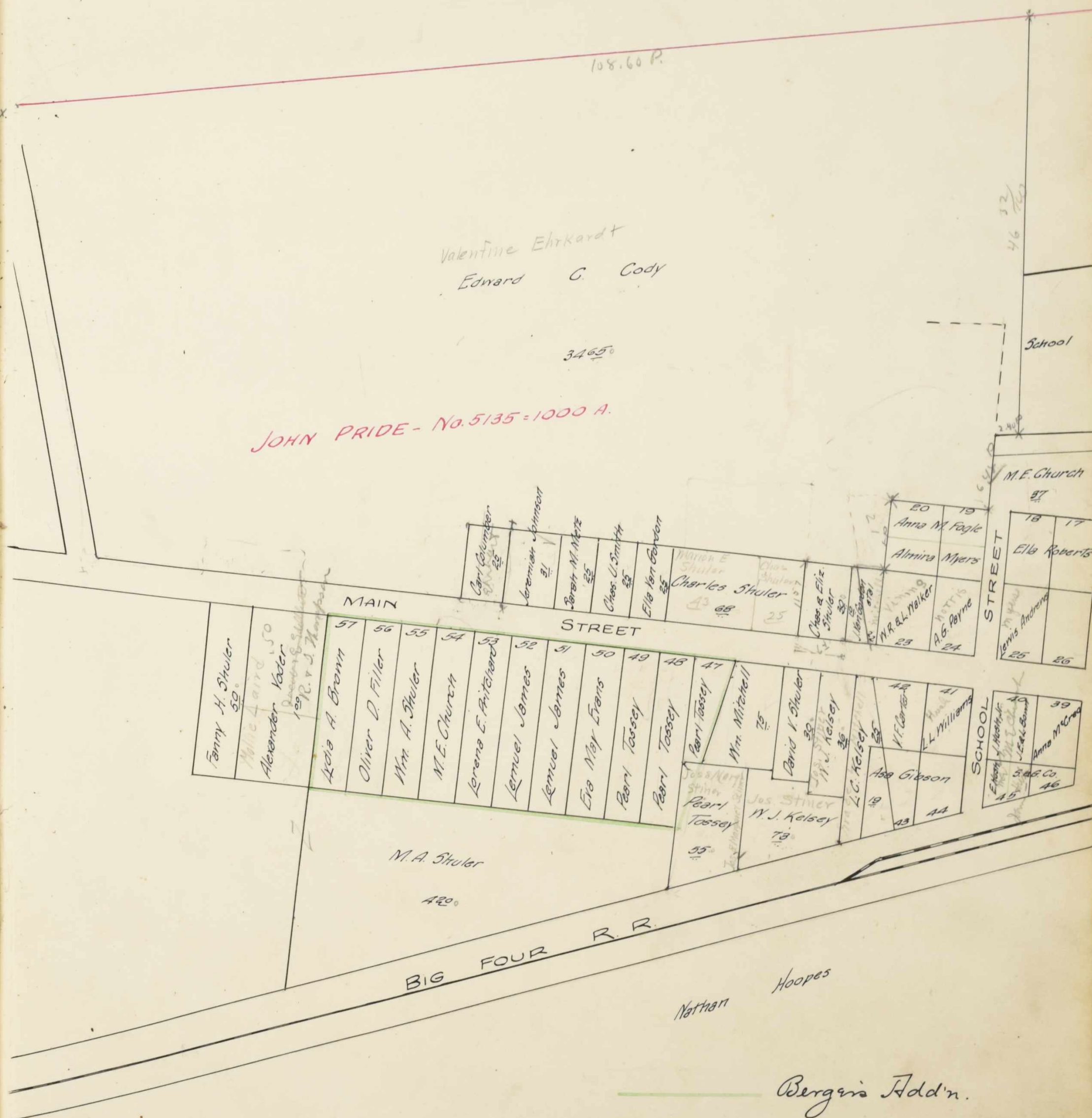
CO LINE ROAD

BIG FOUR ROAD

104



SCALE, 15 POLES TO AN INCH.





WARREN G. SUTTON, AUDITOR
 Phone 642-4881
 OFFICE OF
THE COUNTY AUDITOR
 UNION COUNTY COURT HOUSE
 MARYSVILLE, OHIO 43040
 August 21, 1975



NEW DOVER RESEARCH ON METHODIST CHURCHES

1867 Nathan Kelsey sold .50 acres North of Lots 16 & 15 to the Methodist Church
 1900 The Methodist Church sold the .50 to Mary Hush and was put on the tax Duplicate in 1901
 1904 From Mary Hush to John Hush, Jr.
 1937 From John Hush, Jr. to Dwight Hush & Hazel Bonnett
 1942 From Dwight & Hazel to Everett & Elsie Bump
 1948 Sold to Leo & Helen Davis
 Sold to Ruth Snodgrass
 1954 Sold to Frank Faye & Ann F. Rausch - present owner

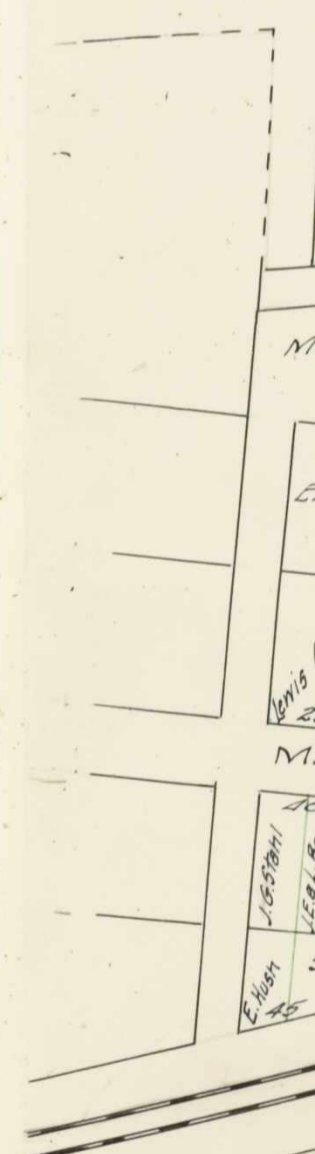
1868 1/8 acre from Solomon Butz to Methodist Church
 1898 .37 acre (deed says 1/2 acre) from Ella Roberts to Trustees of the Methodist Church. North of lots 18 & 17
 Was made tax exempt. Still is on tax exempt book.

1906 Lot 54 sold to Methodist Church (Used for parsonage and is on the tax duplicate - was never exempt)

1920 Lots 40 & 45 to Trustees of the Methodist Episcopal Church (Trustees were W. L. Bennett, John Easton, Pearl Tossey, Watt Sharp & Watt Hodges)
 Was never tax exempt
 1950 Sold to Blanch Low
 1964 Sold to Lewis & Davie McLemore - present owners

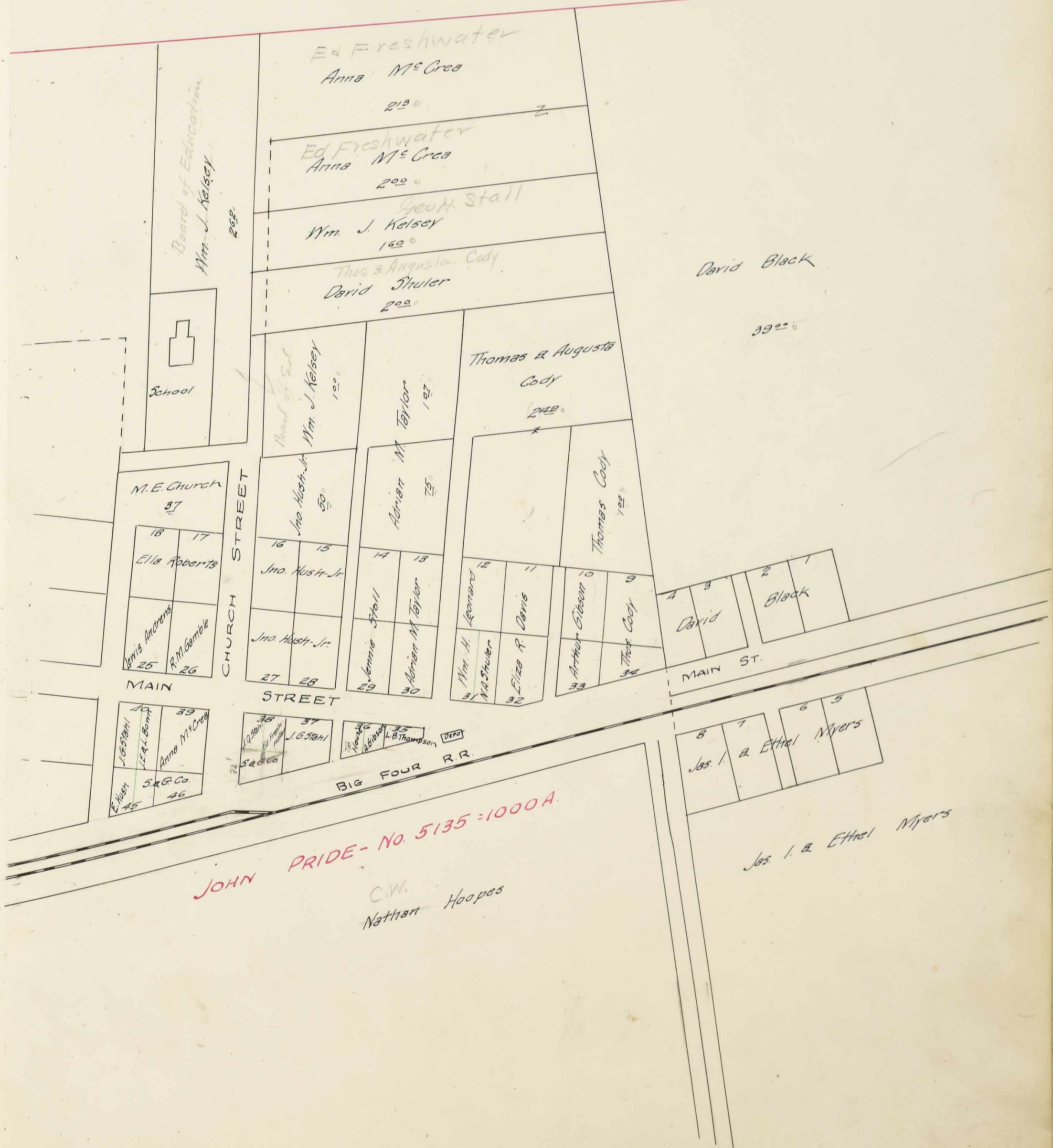
This research was made after it came to our attention Lots 40 & 45 were listed on the tax exempt records since 1920, in error. It should have been the .37 the deed calls .50

M. E. Chaney



TOWN OF *New Dover*

SCALE, 15 POLES TO AN INCH.



Assessment of Real Property in *Dover* Township,

Union County, Ohio, for the Year 1910.

Main assessment table with columns: IN WHOSE NAME ASSESSED, No. of Entry, No. ACRES LAND CLASSIFIED (Arable and Plow Land, Meadow and Pasture Land, Uncultivated and Wood Land, TOTAL ACRES), Value per Acre Excluding Buildings, Total Value Land Excluding Buildings, VALUE OF ALL BUILDINGS (House, House, Mills, Barns and other Build'gs, Total Value Land and Buildings), Changed by County Board of Equalization, Total Value as Equalized by County Board, Deduct Value Roads, Balance, Changed by State Board, Total Dup. Value as Equalized, Plat Page, TRANSFERRED TO, DATE TRANSFERRED, DUP. OF WHAT YEAR (09, 10, 11, 12, 13), REMARKS.

Corrected to Sept. 21 1911.
County Board adds 15% to taxes only. State Board adds 37% to the total so produced.

l. m. m. m. m. m. m. m.

24

Assessment of Real Property in Town of *Town* Township,

Union County, Ohio, for the Year 1910.

Table with multiple columns including: IN WHOSE NAME ASSESSED, No. of Entry, No. ACRES LAND CLASSIFIED, VALUE OF ALL BUILDINGS, Total Value as Equalized by County Board, TRANSFERRED TO, DATE TRANSFERRED, and REMARKS. The table contains numerous rows of property records with handwritten values and dates.

750 17759 6421 675 1726 56 67760 5976 41 00 77835 10105 57990 86650 1340 8720 32060 11870

Assessment of Real Property in *Dorvil* Township,

IN WHOSE NAME ASSESSED	No. of Entry	No. ACRES LAND CLASSIFIED						TOTAL ACRES		Value per Acre Excluding Buildings		VALUE OF ALL BUILDINGS				Total Value Lands and Buildings	Changed by County Board of Equalization	
		Arable and Plow Land		Meadow and Pasture Land		Uncultivated and Wood Land		Acres	H.	Dolls.	Cts.	Dollars	Dollars	Dollars	Dollars		Dollars	Add
		Acres	H.	Acres	H.	Acres	H.									House		
<i>Nankorden Jennie et al.</i>	5135			10				10	80			10	200		210			
<i>Nankorden Ella.</i>	"			25				25	80			20	100		120			
<i>Uning Jonas W.</i>	4065			6				6	43			258	150		488	42		
<i>Mackey Wm</i>	5501	31						31	38			1178	100		1278	172		
<i>Mitt Chas D.</i>	2956	38	81	12		13		62	81	44		2307	100		100	3007	453	
<i>Same.</i>	4065	24	34					24	24	43		1046			1046	154		
<i>Miller John.</i>	3355	25		50		25		100	43			4300		200	4500	640		
<i>Same</i>	5135			32		50		32	50	43		1397	400	200	200	2197	213	
<i>Same</i>	"	58	20					58	20	43		2502			2502	378		
<i>White Arana D.</i>	5498			2				2	36			72	400		472	8		
<i>Williams G.B.</i>	4065			25				25	43			10			10			
<i>Million Rachel B.</i>	9028	50		32		14		96	40			3840	100	100	4040	580		
<i>Miston Maria F. (Life)</i>	5869			6				6	41			246	250		496	54		
<i>Mitcraft James & Mary.</i>	5501	15	75	20		15		50	75	37		1877	250		2127	285		
<i>Yoder Alexander.</i>	5135			1				1	80			80	150		230			
<i>b.b. & H. L. R.R. Co</i>																		

Total Value as Equalized by County Board	Deduct Value Roads	Balance	Changed by State Board		Total Dup. Value as Equalized	Plat Page	TRANSFERRED TO	DATE TRANSFERRED	DUP. OF WHAT YEAR					REMARKS	
			Added	Deduct					'09	'10	'11	'12	'13		
															Page
210		210	80		290	12	<i>Mary E. Miller</i>	7/23/04						107	
120		120	40		160	12	✓								
450	14	430	160		590	11	✓								
1450	30	1420	330		1950	6	✓								
3450	66	3370	1250		4620	3	<i>W. E. A. Gladman</i>	7/3/10						107	
1200	40	1200	446		1640	3	<i>W. E. A. Gladman</i>	7/3/10						107	
5140	140	5000	1890		6990	4	✓								
2410	140	2270	840		3110	5	✓								
2880	20	2860	1060		3920	5	✓								
400	20	460	170		630	2	✓								
10		10			10	11	✓								
4620	50	4570	1690		6260	5	<i>W. E. A. Gladman</i>	7/3/10						107	
550	30	520	190		690	7	✓								
2410	20	2390	880		3270	6	✓								
240		240	90		330	5	✓								

243 10 162 10 67 472 20 196 43 2200 200 600 22643 2997

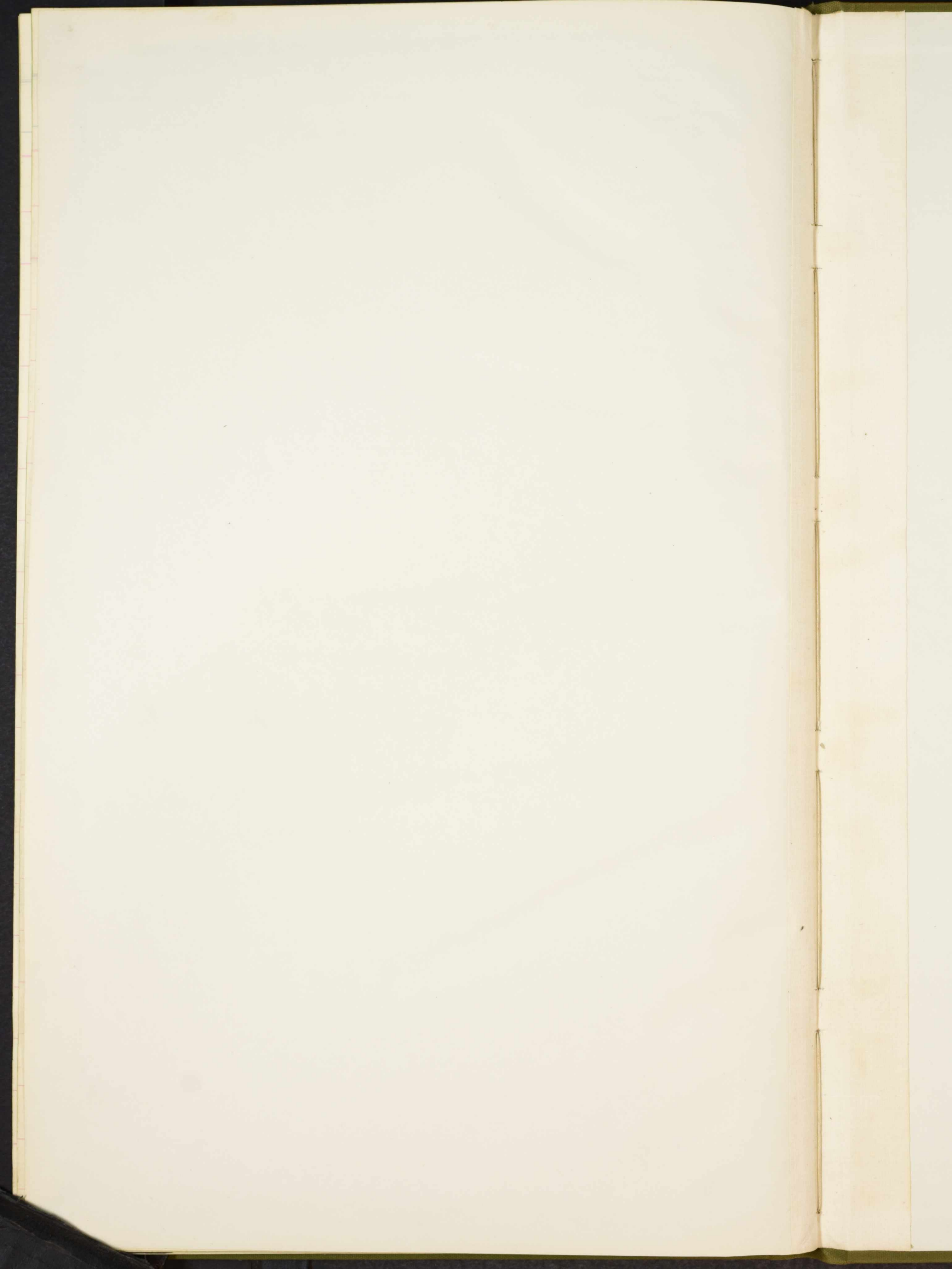
25580 490 25150 9310 34460

IN WHOSE NAME ASSESSED	No. of Entry	No. ACRES LAND CLASSIFIED						TOTAL ACRES		Value per Acre Excluding Buildings				Total Value Land Excluding Buildings				VALUE OF ALL BUILDINGS				Total Value Lands and Buildings		Changed by County Board of Equalization		Total Value as Equalized by County Board	Deduct Value Roads	Balance	Changed by State Board		Total Dup. Value as Equalized	Paid Page	TRANSFERRED TO	DATE TRANSFERRED	DUP. OF WHAT YEAR					REMARKS
		Arable and Plow Land		Meadow and Pasture Land		Uncultivated and Wood Land		Acres	H.	Dolls.	Cts.	Dollars	House	House	Mills	Barns and other Build'gs	Dollars	Dollars	Dollars	Dollars	Dollars	Added	Deduct	Dollars	'09				'10	'11					'12	'13				
		Acres	H.	Acres	H.	Acres	H.	Acres	H.	Dollars	Cts.	Dollars	Dollars	Dollars	Dollars	Dollars	Dollars	Dollars	Dollars	Dollars	Dollars	Dollars	Dollars	Page	Page				Page	Page					Page					
Beard Joseph H.	5869	36	25	25		61	25	38		2327					2327	355					2680	2	76	2590	960	3550	7	✓												
Bard R. F.	"	3		2		5		38		190	400			390	50						620	1/4	9	610	230	840	7	✓												
Bushman Louisa	"		21			21		38		798				798	122						920	1/4	9	910	340	1250	7	✓												
Bowdre Benj. F.	"	13	6	4		23		39		897	200		200	1297	153						1450	1	50	1400	520	1920	7	✓												
Fogle Eli	5869	22	12	8		42		38		1396	200		150	1946	244						2190	1/2	20	2170	800	2970	7	✓												
Same	"	6	90			6		90	38	262				262	58						500			300	110	410	7	✓												
Fogle Leonard	"	18	10	15		33		10	38	1257				1257	195						1450			1450	540	1990	7	✓												
Hammes Saml N.	5505	46	35	40	15	96	40	41		3932	600		600	5152	588						5740	23	110	5630	2050	7710	2	✓												
Reed Alexander D.	5869	10				10		38		380				380	60						440			440	160	600	7	✓												
Spurgeon Clark	5869	13	13			26		40		1040	200		100	1340	160						1500	1/2	30	1470	540	2010	7	✓												
		168		26		12		40		54		324		65		12699		16 00		1050		15349		1941		17290		320		16970		6280		23250						

IN WHOSE NAME ASSESSED	No. of Entry	No. ACRES LAND CLASSIFIED						VALUE OF ALL BUILDINGS						Total Value Lands and Buildings	Changed by County Board of Equalization	
		Arable and Plow Land		Meadow and Pasture Land		Uncultivated and Wood Land		House		Mills	Barns and other Build'gs					
		Acres	H.	Acres	H.	Acres	H.	Dollars	Dollars			Dollars	Dollars			
Springdale Baptist Church							1		36				36		1836	
New Haven M. E. Church							25		20				20		1520	
Buxton Cemetery							1		40				40		40	
Mt. Hermon Cemetery							1		42				42		42	
Schools																
No 1							1		45				45		1045	
.. 2							1		40				40		240	
.. 3							1		38				38		280	
.. 4							1		34				34		236	
.. 5							1		40				40		220	
.. 6							1		40				40		190	
.. 7							78		30				30		230	
.. 8							60		21				21		221	

Total Value as Equalized by County Board	Deduct Value Roads	Balance	Changed by State Board	Total Dup. Value as Equalized	Plate Page	TRANSFERRED TO	DATE TRANSFERRED	DUP. OF WHAT YEAR					REMARKS		
								'09	'10	'11	'12	'13			
														Page	Page
Dollars	Acres	Dollars	Dollars	Dollars											
Total balance of Farm land															
						Acres	land		land & Buildings						
						Page No 1	1684 58	63680		72140					
						.. 2	1778 88	70895		81370					
						.. 3	1483 00	57620		66040					
						.. 4	1722 52	66914		76989					
						.. 5	1563	61038		69363					
						.. 6	1972 23	78600		91150					
						.. 7	1741 02	69317		78437					
						.. 8	1528 31	61569		70584					
						.. 9	372 20	19641		22441					
						.. 10	324 45	12703		15253					
							14171.94	\$361969		\$643767					

illage of Hovers 2x8 10560
Grand Total \$454327



**DOVER TP.
UNION COUNTY
1910**