

**DARBY TP.
UNION COUNTY
1910**

DARBY

1910

**DARBY TP.
UNION COUNTY
1910**

UNION

To *G.*

ITEMIZED ST
IN

14 day of
17 day of
18 day of
22 day of
25 day of
2 day of
3 day of
7 day of
8 day of
15 day of
23 day of
24 day of
25 day of
16 day of
23 day of
24 day of
29 day of
30 day of
31 day of
6 day of
17 day of
12 day of
13 day of
15 day of
16 day of
20 day of
22 day of
23 day of
26 day of
26 day of
27 day of
28 day of
29 day of
2 day of
3 day of
5 day of
12 day of
13 day of
14 day of
17 day of
18 day of
2 day of
3 day of
4 day of
7 day of
8 day of
9 day of
10 day of
11 day of
13 day of

Darby

APPRAISER'S ACCOUNT.

UNION COUNTY

To *G. F. Scheiderer* Land Appraiser of *Darby Township* Dr.

ITEMIZED STATEMENT OF DAYS ACTUALLY EMPLOYED IN MAKING SAID APPRAISEMENT.	
14 day of <i>January</i>	14 th day of <i>June</i>
17 day of "	17 day of "
18 day of "	18 day of "
22 day of "	20 day of "
25 day of "	21 day of "
2 day of <i>February</i>	22 day of "
3 day of "	day of "
7 day of "	day of "
8 day of "	day of "
15 day of "	day of "
23 day of "	day of "
24 day of "	day of "
25 day of "	day of "
16 day of <i>March</i>	day of "
23 day of "	day of "
24 day of "	day of "
29 day of "	day of "
30 day of "	day of "
31 day of "	day of "
6 day of <i>April</i>	day of "
7 day of "	day of "
12 day of "	day of "
13 day of "	day of "
15 day of "	day of "
16 day of "	day of "
20 day of "	day of "
22 day of "	day of "
23 day of "	day of "
26 day of "	day of "
26 day of "	day of "
27 day of "	day of "
28 day of "	day of "
29 day of "	day of "
2 day of <i>May</i>	day of "
3 day of "	day of "
5 day of "	day of "
12 day of "	day of "
13 day of "	day of "
14 day of "	day of "
17 day of "	day of "
18 day of "	day of "
2 day of <i>June</i>	day of "
3 day of "	day of "
4 day of "	day of "
7 day of "	day of "
8 day of "	day of "
9 day of "	day of "
10 day of "	day of "
11 day of "	day of "
13 day of "	day of "

For services rendered in appraising the Real Estate of said
Township, for the year 1910, occupying *56*
 days, between the *14th* day of *January*, and the
22nd day of *June*, at \$ *3⁵⁰* per day,
 \$ *196⁰⁰*.

And the said *G. F. Scheiderer*
 being duly sworn, solemnly declares that the number of days herein
 stated were necessarily occupied in the appraisement of said
Township, and that this account is in all respects
 just and true.

(Signed) *G. F. Scheiderer*
 Appraiser.

Sworn to and subscribed before me, this *22nd* day of
June, 1910.

(Signed) *Harold Dey*
 Deputy Auditor of said County.

The above account is hereby approved this _____ day of
 _____, 1910.

L. M. Cline
E. J. Jones
A. R. With }
 Commissioners,
 Union County,
 Ohio.

Received _____, 1910, of the Auditor of
 Union County, an order on the Treasurer of said County, for
 _____ Dollars
 and _____ Cents, in full of the above account.

(Signed) _____
 Appraiser.

\$

STATEMENT OF SURVEYS.

S. H. STANGE & CO., CHICAGO.

No. OF ORIGINAL SURVEY	Original Quantity	ORIGINAL PROPRIETORS	WATER COURSE	PAGE	No. OF ORIGINAL SURVEY
2671	1000	Richard Stephenson	Darby Creek.	6	
2675	1000	Lucas Sullivant	Darby Creek	2	706
2879	1000	Lucas Sullivant.	Darby Creek	3 & 5	721
2977	600	Samuel Robinson	Darby Creek.	8	724
					738
3162	640	Lucas Sullivant	Darby Creek	12	739
3272	100	Lucas Sullivant	Darby Creek	11	739
3311	200	Lucas Sullivant	Darby Creek	5	739
3312	122	Lucas Sullivant	Darby Creek	5	740
3312	151	Lucas Sullivant	Darby Creek	5	775
3482	566 ² / ₃	Richard Stephenson	Darby Creek	7	775
3483	450	Richard Stephenson	Darby Creek	2	791
3484	800	Lucas Sullivant	Darby Creek	8	
3682	310 ² / ₃	R. Power & L. Sullivant	Darby Creek	8	816
3687	548 ² / ₃	John Scott.	Darby Creek	7	850
3881	344 ¹ / ₂	John Knight.	Darby Creek.	8	858
					876
4067	1120	Elizabeth Rickman	Mill Creek	3	
4903	100	William Petty.	Darby Creek	4	900
4982	100	Balzer King	Darby Creek	9	900
4998	350	Peter Manifold	Darby Creek	2	
					107
5005	200	Richard Smyth	Darby Creek	7	108
5008	657	Hugh Woodson	Darby Creek	4	109
5009	265	Hugh Woodson	Darby Creek	2	
5053	42	Peter Manifold	Darby Creek	2	1101
5111	80	Lucas Sullivant	Darby Creek	11	
5122	100	Minor Smith	Darby Creek	2	1207
5124	400	James Galloway Jr.	Darby Creek	6	121
5137-7964 ² / ₄ 7218	654 ¹ / ₂	James Galloway Jr.	Darby Creek	3	122
5139	1000	Richard L. Anderson.	Darby Creek.	4	122
5141	100	William Steel	Mill Creek	4	122
5142	200	John Arnold.	Mill Creek	4	122
5236	100	Lucas Sullivant	Darby Creek	11	129
5743	200	James Galloway Jr.	Darby Creek.	9	
					144
6233	100	Tuttle Hudson.	Treadles Creek	9	153
6602	683	James Galloway Jr.	Darby & Treadles Creek	9	
6973	100	James Galloway Jr.	Darby Creek.	11	

STATEMENT OF SURVEYS.

PAGE	No. OF ORIGINAL SURVEY	Original Quantity	ORIGINAL PROPRIETORS	WATER COURSE	PAGE
6					
2	7063	60	James Galloway Jr.	Darby Creek	12
3 & 5	7218	592 1/2	Benjamin W. Ladd.	Darby Creek.	6
8	7245	543	J. Johnston and J. Graham	Darby Creek.	5 & 10
	7388	91	John Graham	Darby Creek.	12
12	7393	313	John Graham	Darby Creek.	10
11	7397	100	James Johnston	Darby Creek	9
5	7399	86 1/3	Joseph Chambers.	Darby Creek	9
5	7400	100	Joseph Chambers.	Darby Creek	9
5	7751 and 7774.	447	Walter Dun.	Darby Creek	12
7	7759	90	Gross Scruggs.	Darby Creek	12
2	7916	800	J. Johnston and J. Graham.	Darby Creek.	9
8					
8	8167	100	Walter Dun	Darby Creek	11
7	8508	80	Walter Dun	Darby Creek	11 & 12
8	8586 & 8698	441	Walter Dun and John Graham.	Darby Creek	10
	8783	350	Walter Dun.	Darby Creek.	11
3					
4	9003	80	Joseph Ladd and others	Mill Creek.	4
9	9005	13.	Same.	Darby Creek.	2
2					
	10793	200	David Chapman.	Darby Creek	11
7	10810	75	Walter Dun.	Darby Creek	12
4	10987 and 12170	153	David Chapman.	Darby Creek.	10
2					
2	11012	120	Walter Dun	Darby Creek.	11
11					
2	12075	55	Hugh Woodson.	Darby Creek.	9
6	12169	200	Samuel Smith.	Darby Creek	9
3	12240 and 12877	258	W. Schooler and Walter Dun.	Darby Creek.	11
4	12269	130	Thomas Lucas	Darby Creek.	11
4	12269	12	Thomas Lucas.	Darby Creek.	11
4	12270	250	Thomas Lucas	Darby Creek	10
11	12927	40	Joseph Spencer.	Darby Creek	9
9					
	14437	40	Michael Sager.	Darby Creek	11
9	15310	80	James Galloway.	Darby Creek.	3
9					
11					

Peter M
No. 4998
Page 2

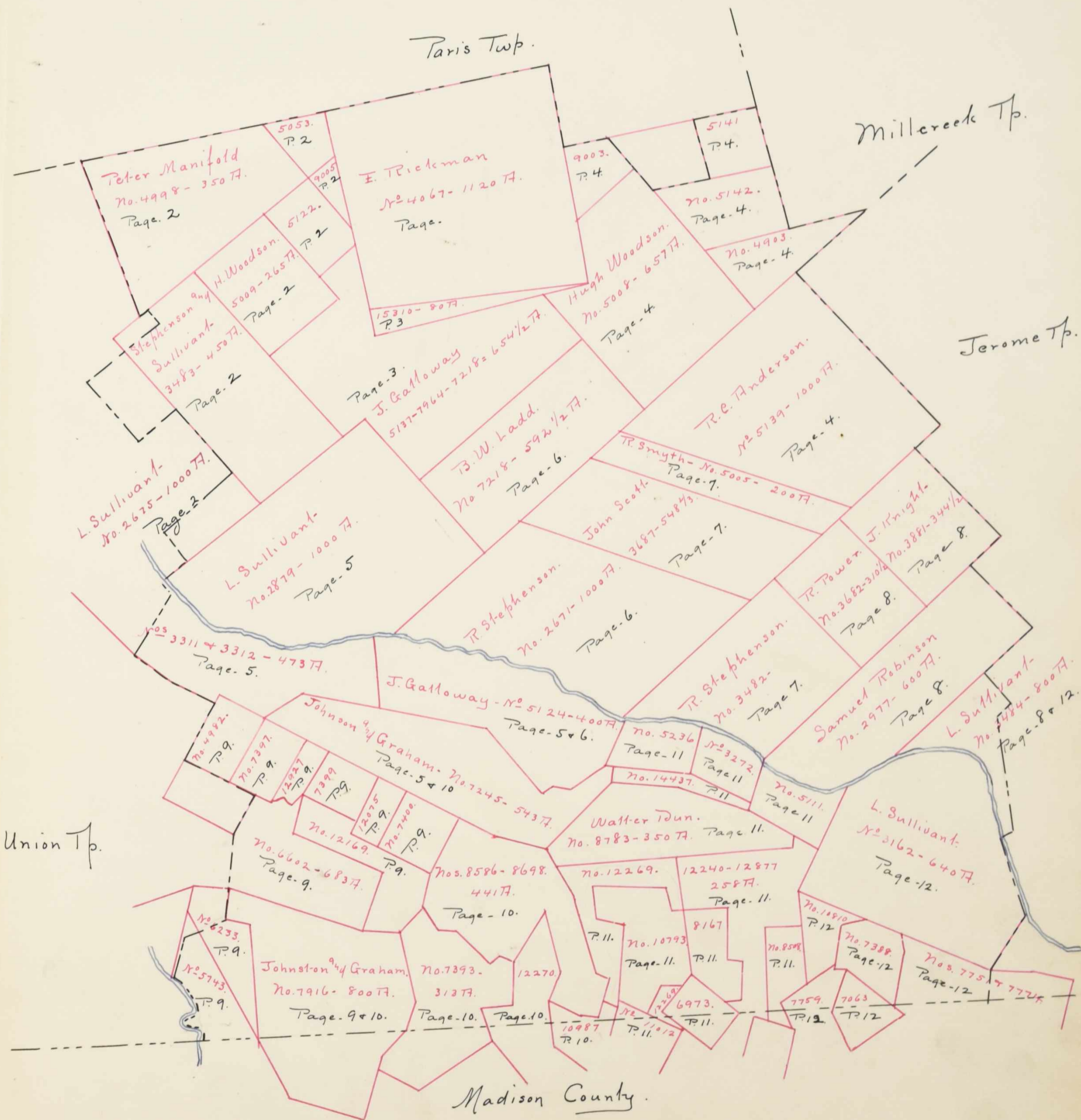
Stephens
Sull
34

L. Sullivan
No. 2675-100
Page

nos 3

Union Tp.

SCALE, 80 POLES TO AN INCH.



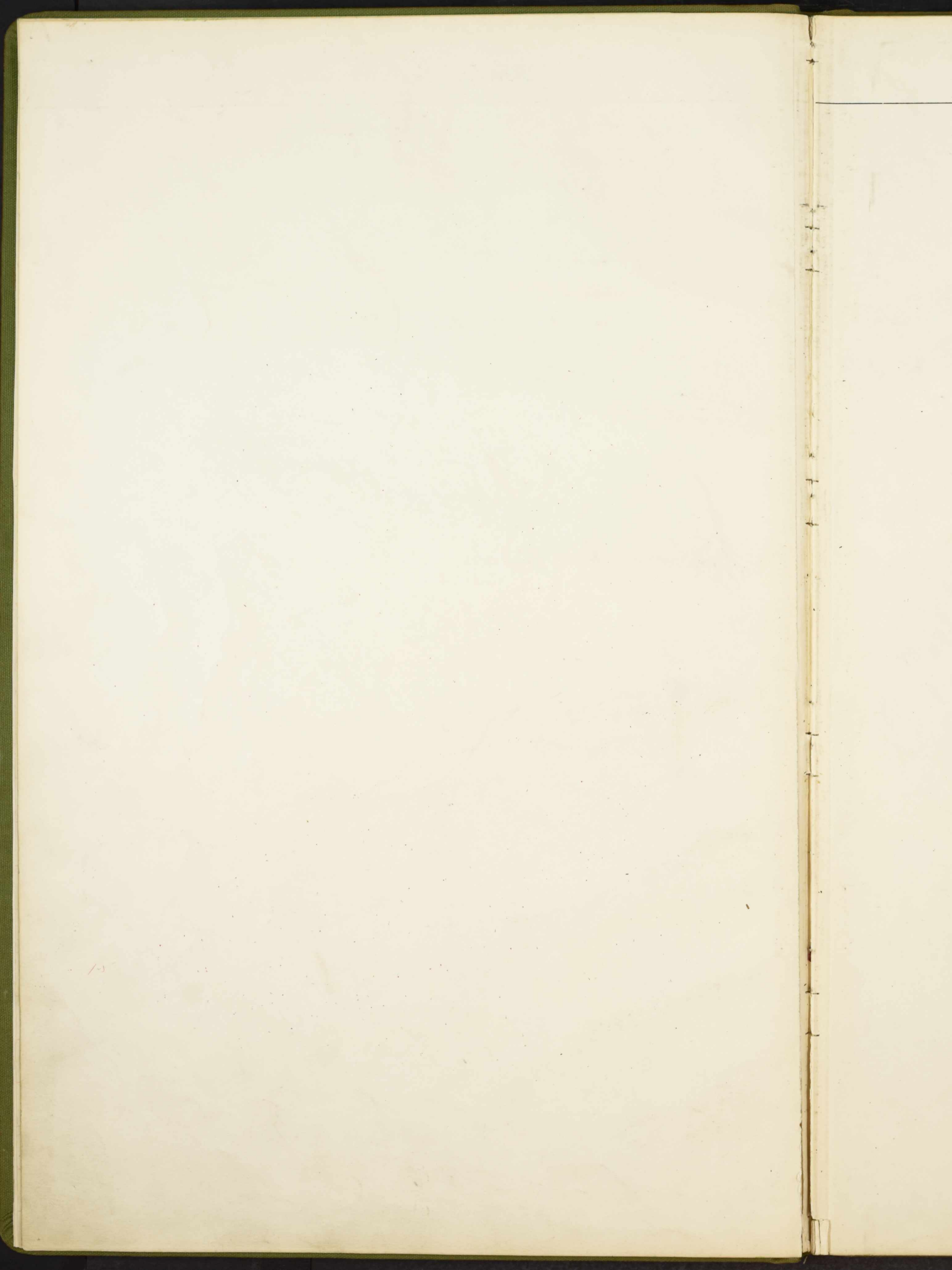
Union Tp.

Paris Twp.

Millcreek Tp.

Jerome Tp.

Madison County.

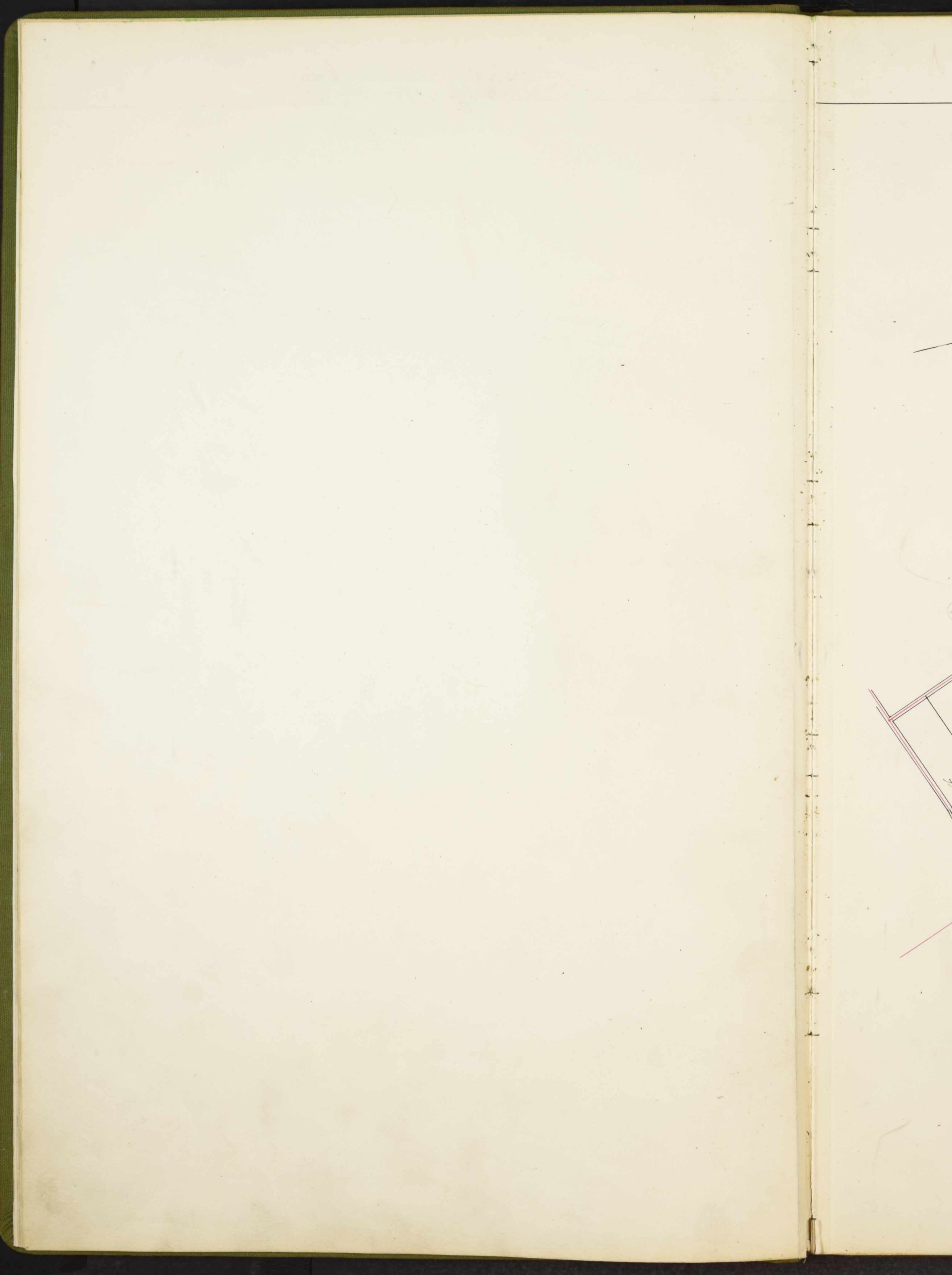


SURVEY No. 5053-9005-

5122-4998-5009-3483-2675.

SCALE, 80 POLES TO AN INCH.





SURVEY No. 4067 *EJ*-

5053-9005-15310-5137-2879.

SCALE, 80 POLES TO AN INCH.



Edwin
Martin R
655
LADD & L
No. 9003

Conra

5133

Louis
Geo. Dellinger
5175

HUGH W

1825
Jno. George

5212

Louis

Austin Henry

Fred
Andrew

SURVEY No. 5139 *and*

9003 - 5141 - 5142 - 4903 - 5008 - 5005.

SCALE, 80 POLES TO AN INCH.



*John Mill Creek Special School
 Includes 200 acres only viz
 Greenwood 1130 and Mathias Flatt 532
 Balance returned to Zandy T. S. Taylor
 L.S.M.*

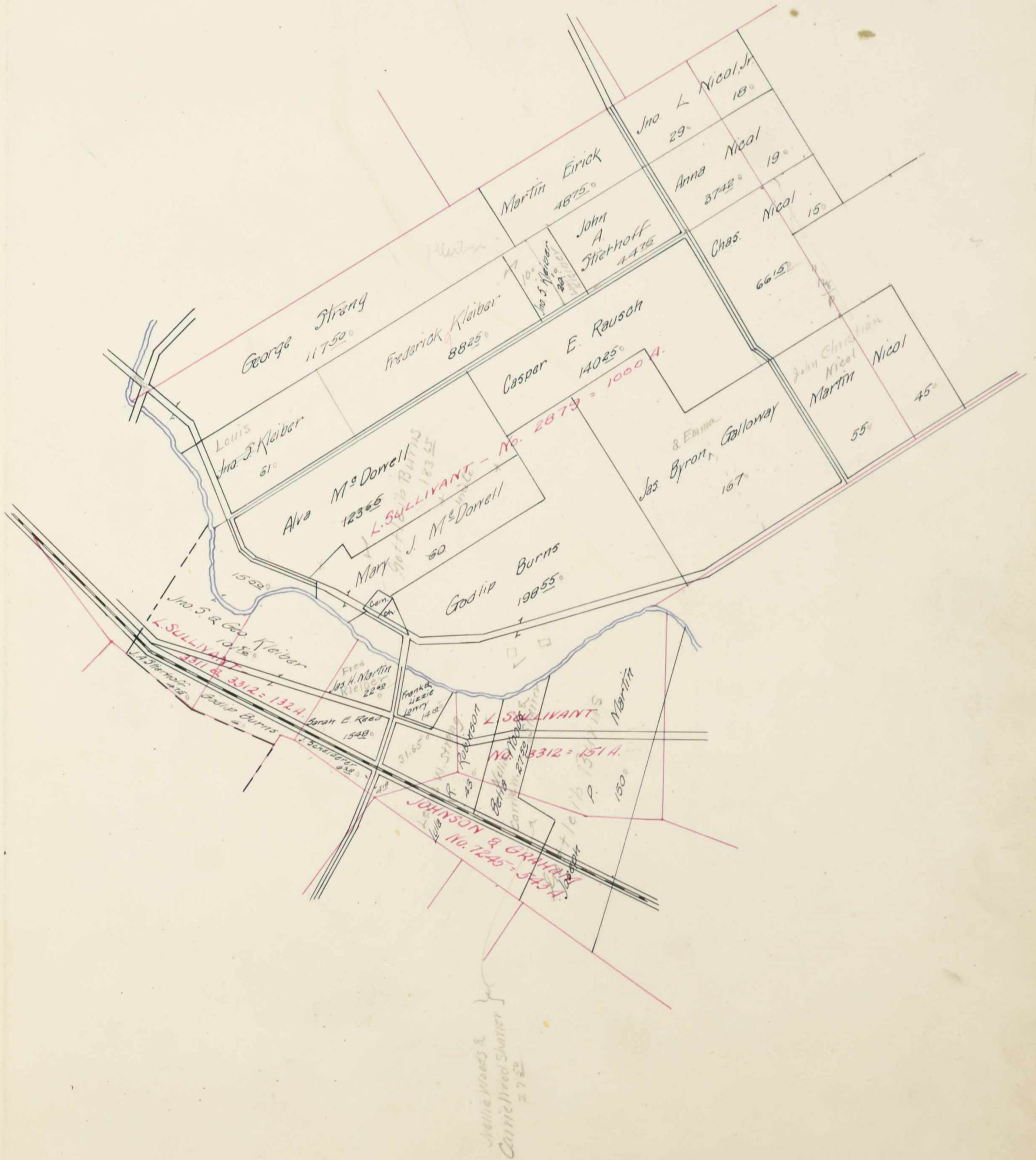
*106.75
 24
 130.75*

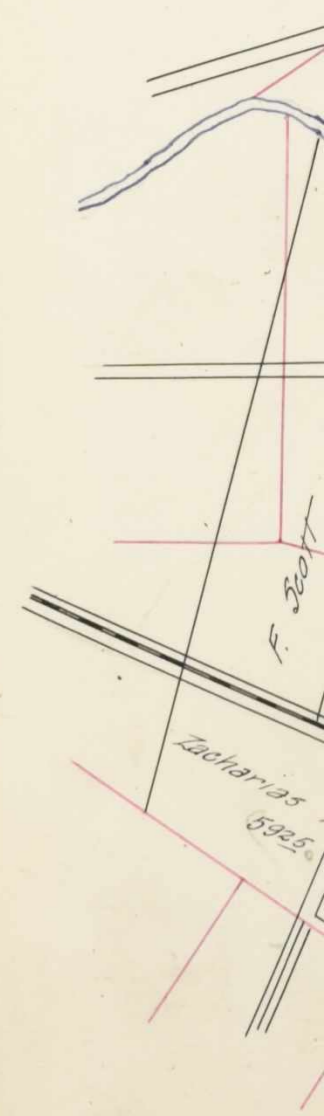
*Mill Creek Sch. Dist.
 Jerome Sch. Dist.*



SURVEY No. 2879-3311-3312-7245.

SCALE, 80 POLES TO AN INCH.





SURVEY No. 7218-3687-2671-5124.

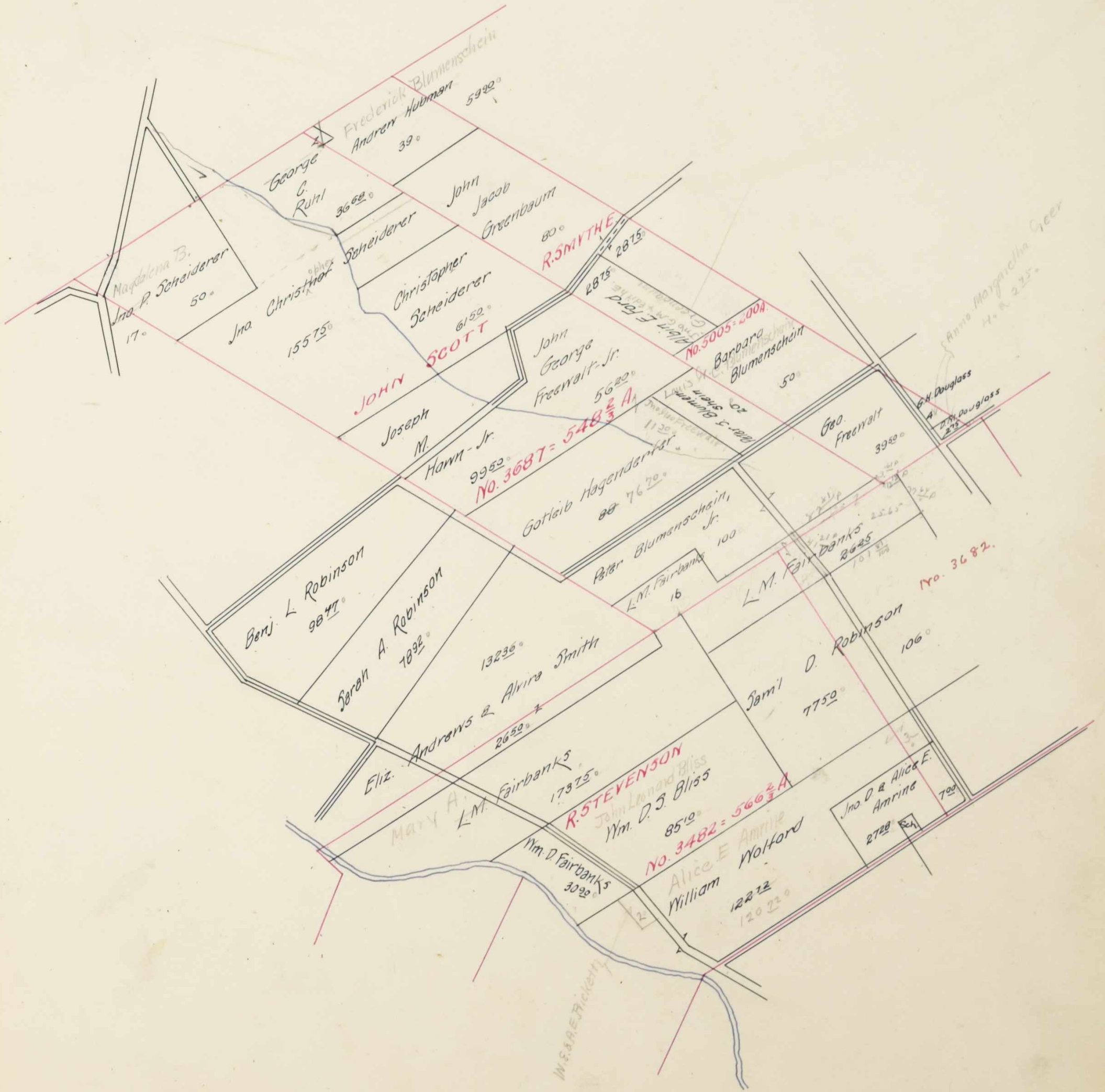
SCALE, 80 POLES TO AN INCH.





SURVEY No. 5005-3687-3482.

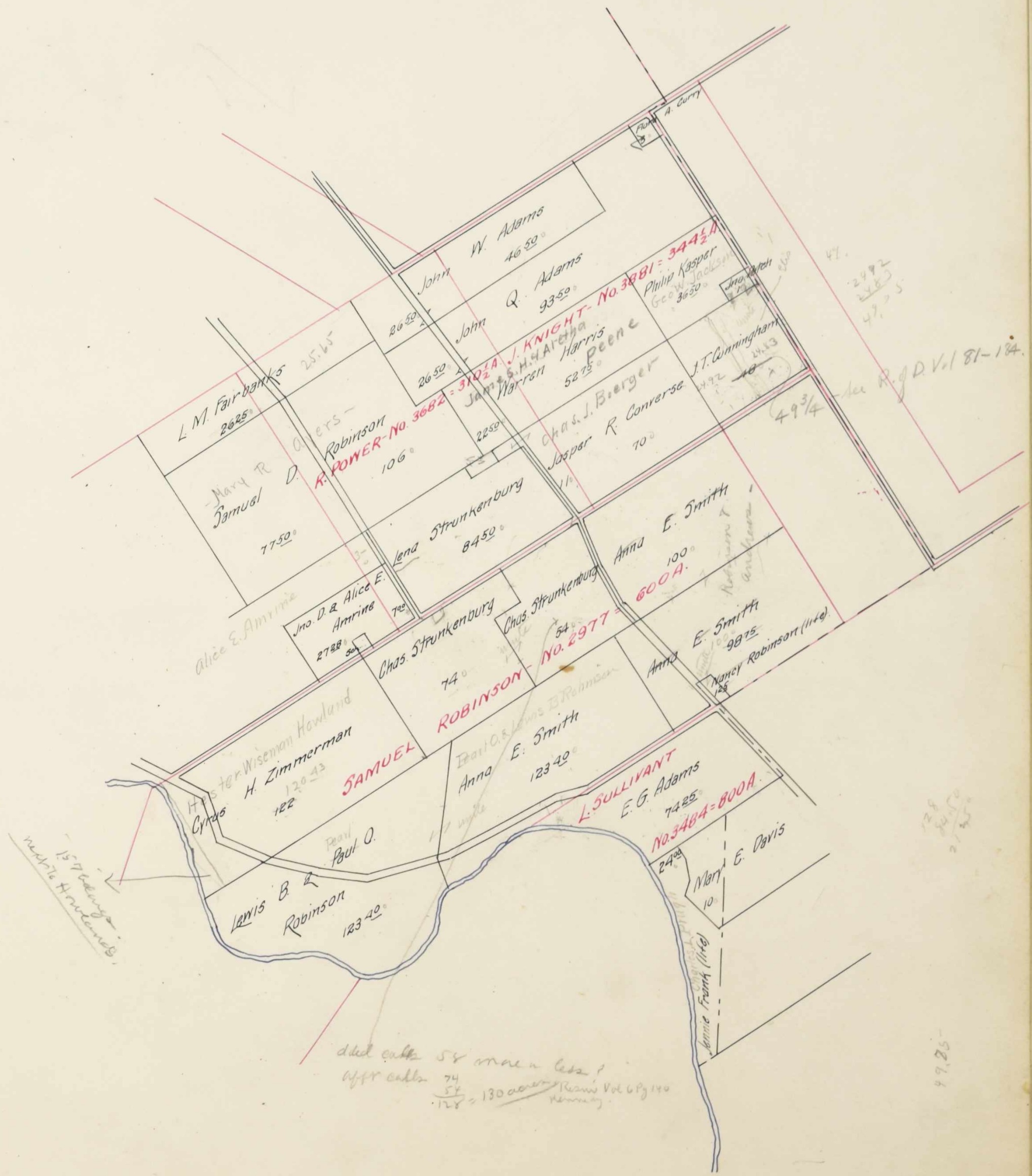
SCALE, 80 POLES TO AN INCH.



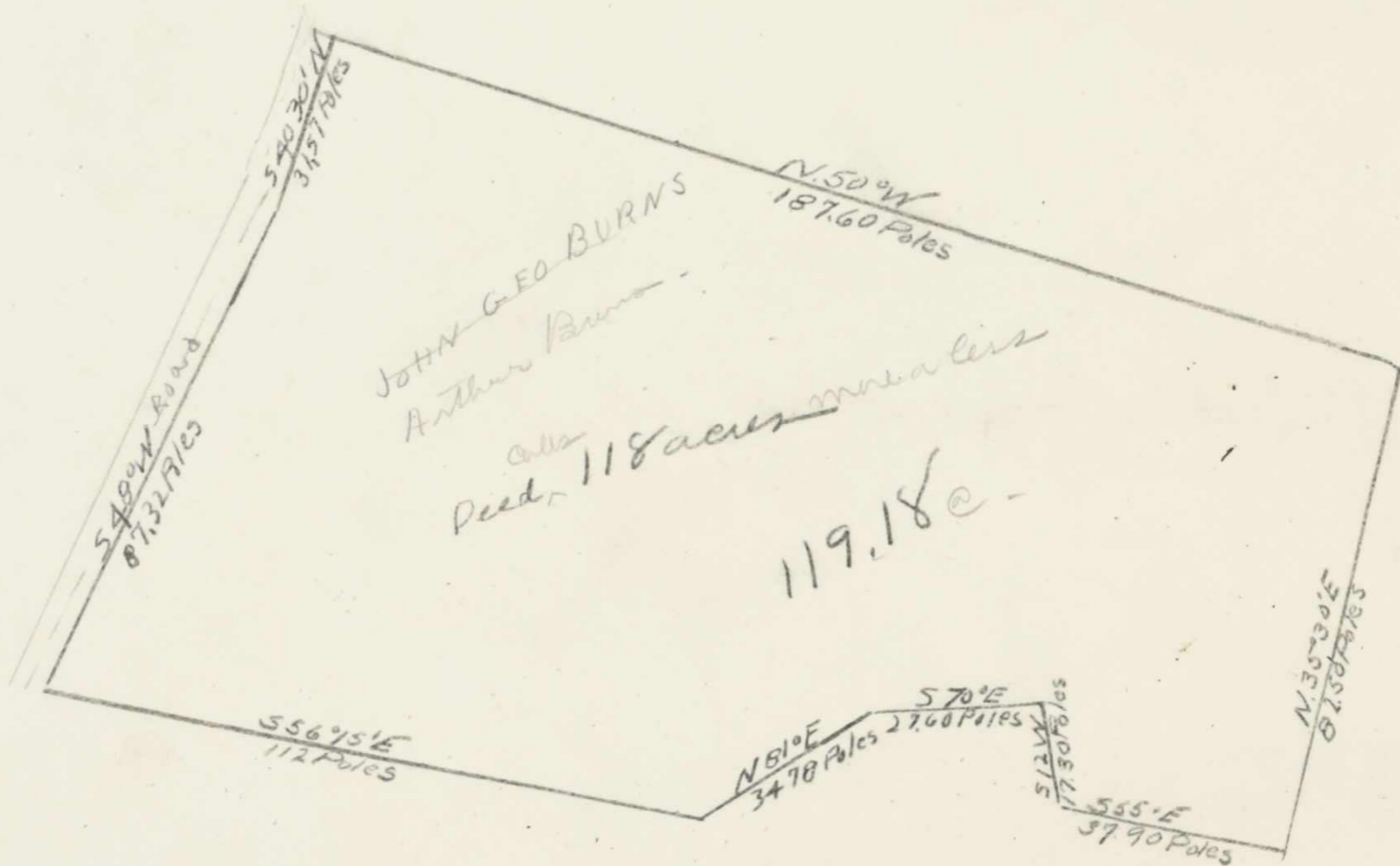
157
Mud's House

SURVEY No. 3881-3682-2977-3484.

SCALE, 80 POLES TO AN INCH.



d'd call 54 main call
 w/pt call 74
 54
 128 = 130 acres
 Ream's Vol 6 Pg 140
 99.25

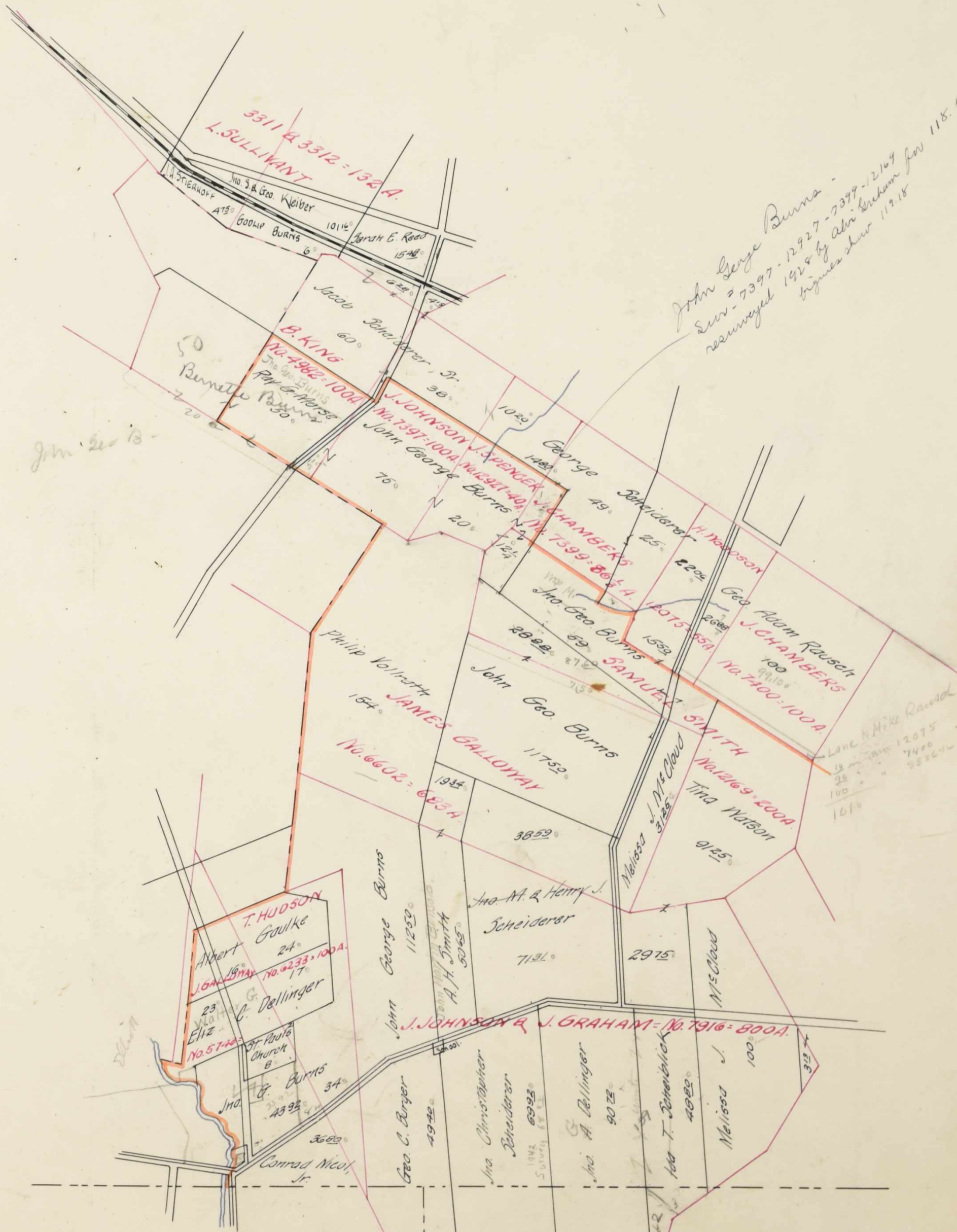


John Geo.

SURVEY No. 7916 and -

4982-7397-12927-7399-12075-7400-12169-6602-6233-5743.

SCALE, 80 POLES TO AN INCH.



Jan 20 13

John

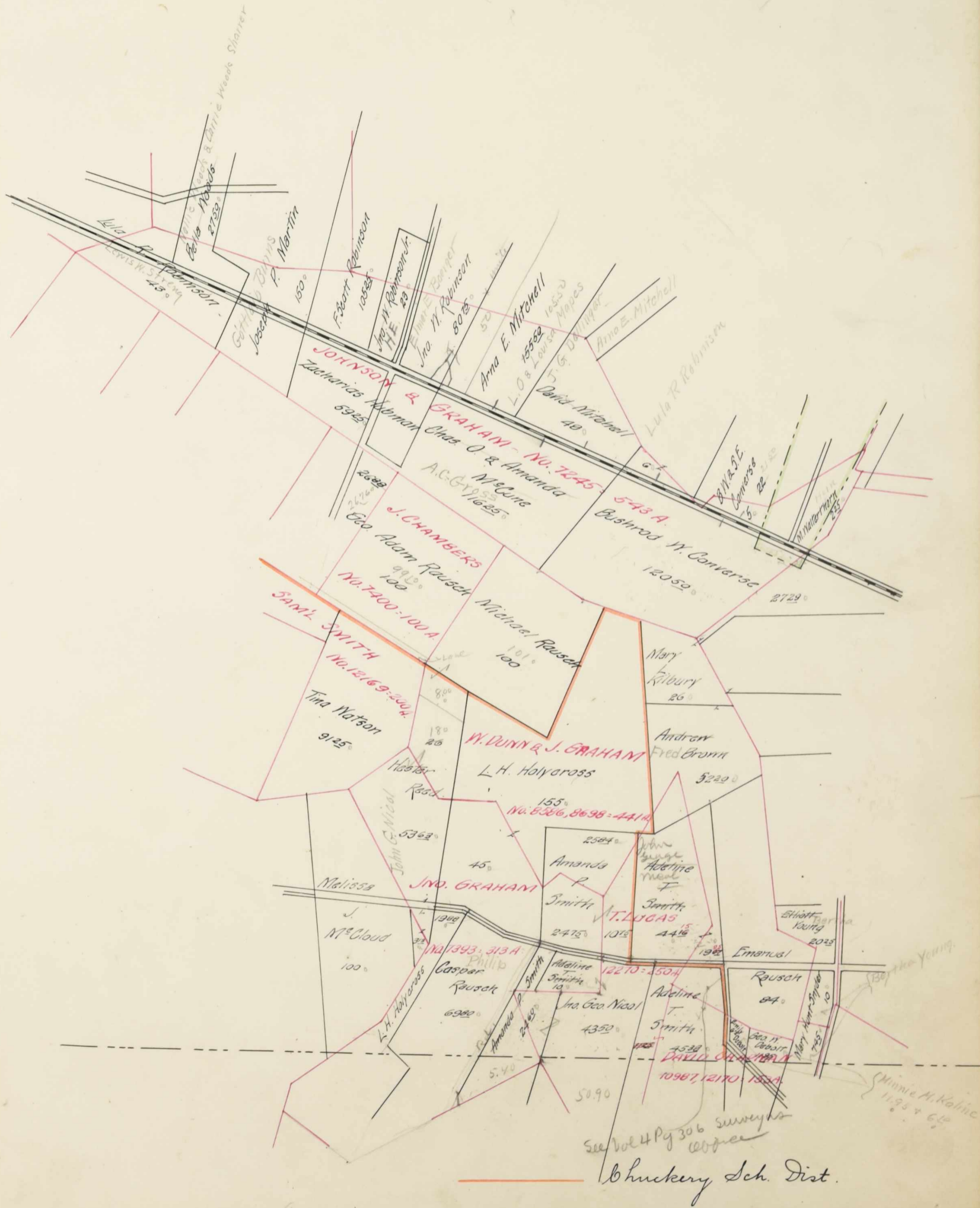
Chuckery Sch. Dist.



SURVEY No. 7245-8586+8698-7916-7393-12270.

7400

SCALE, 80 POLES TO AN INCH.



7

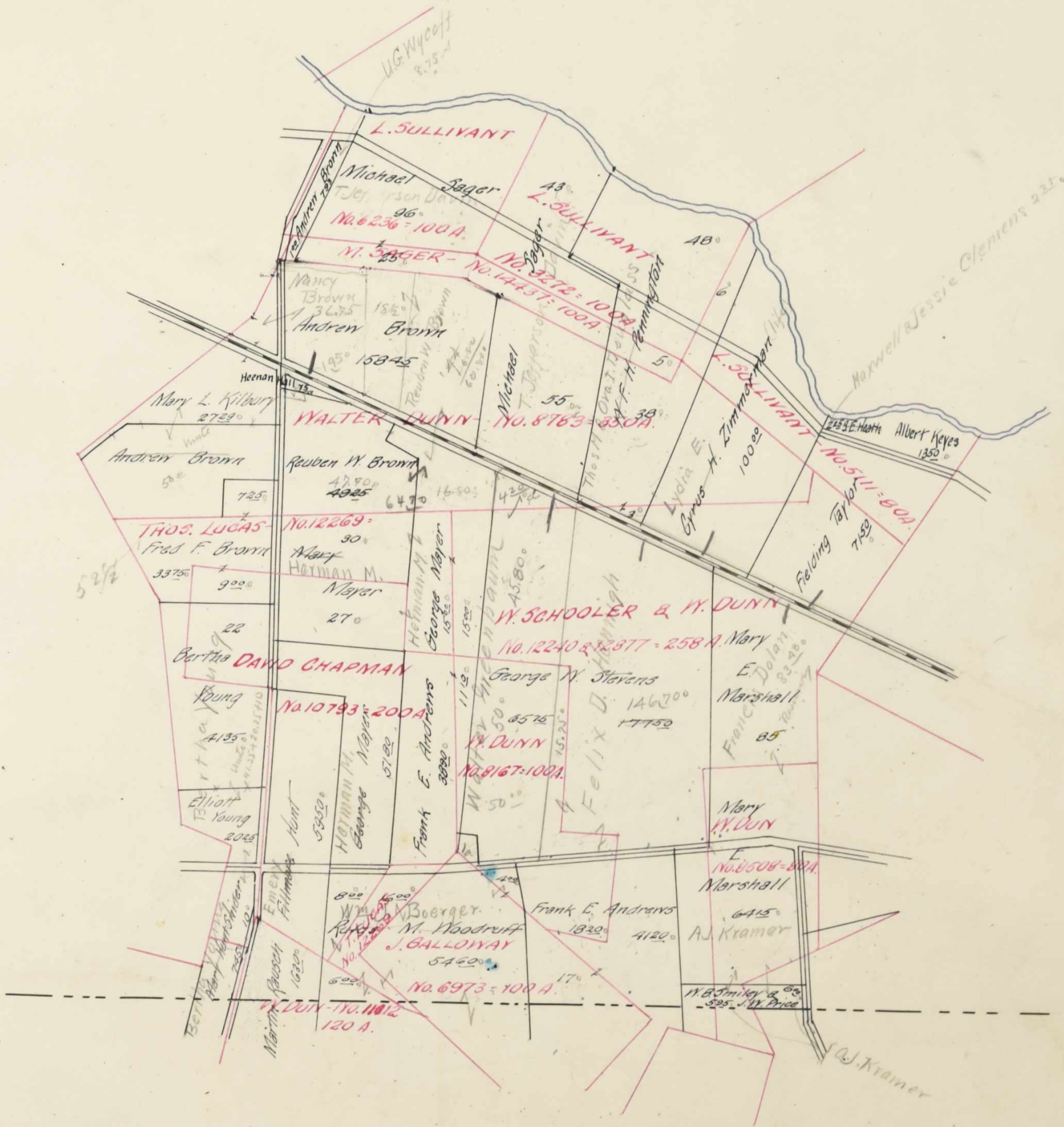
M

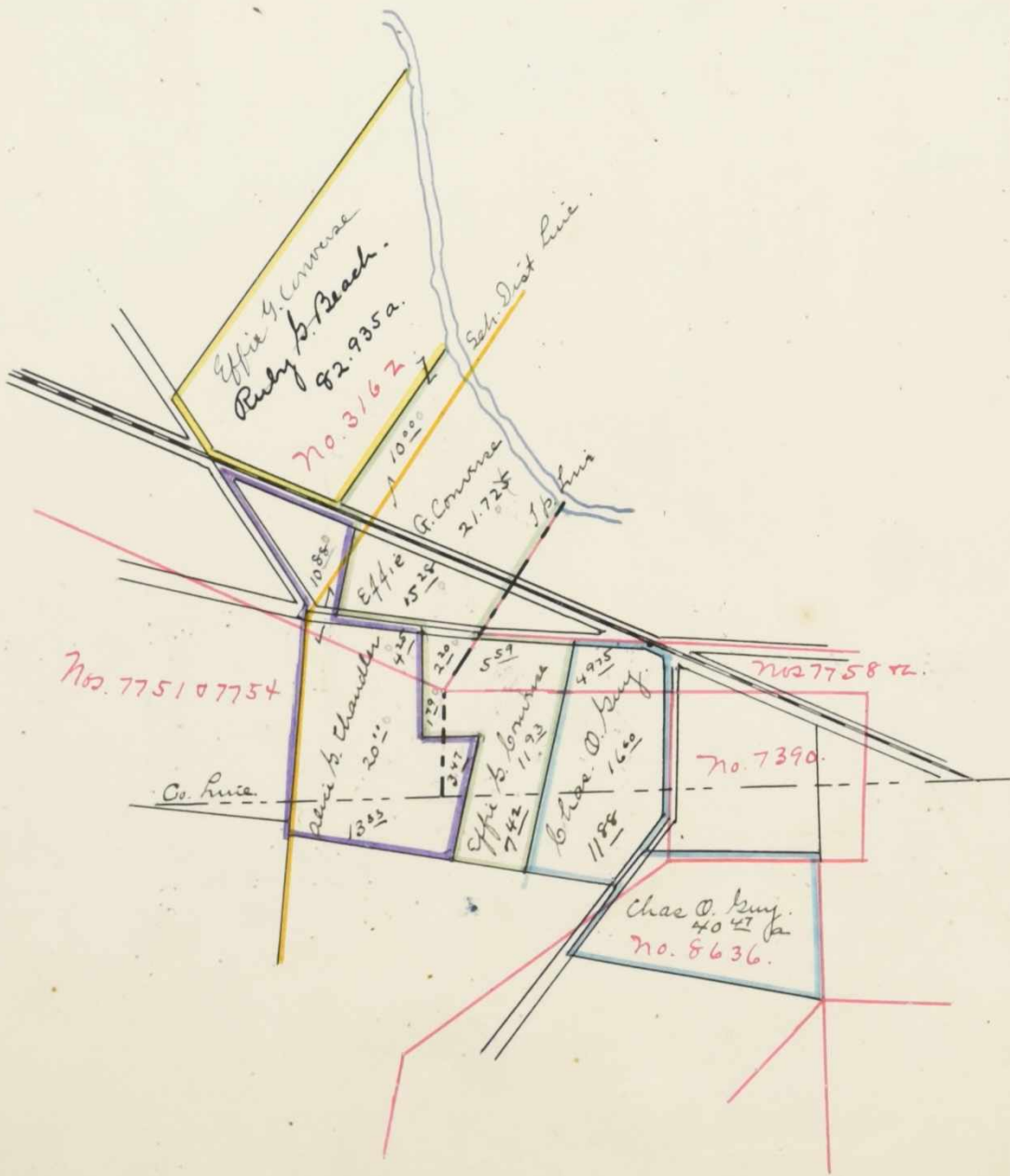
5 2/2

SURVEY No. 5236-3272-14437-8783-

12269-10793-12240 & 12877-8167-6973-11012-8508.

SCALE, 80 POLES TO AN INCH.





11.93
7.42
17.35

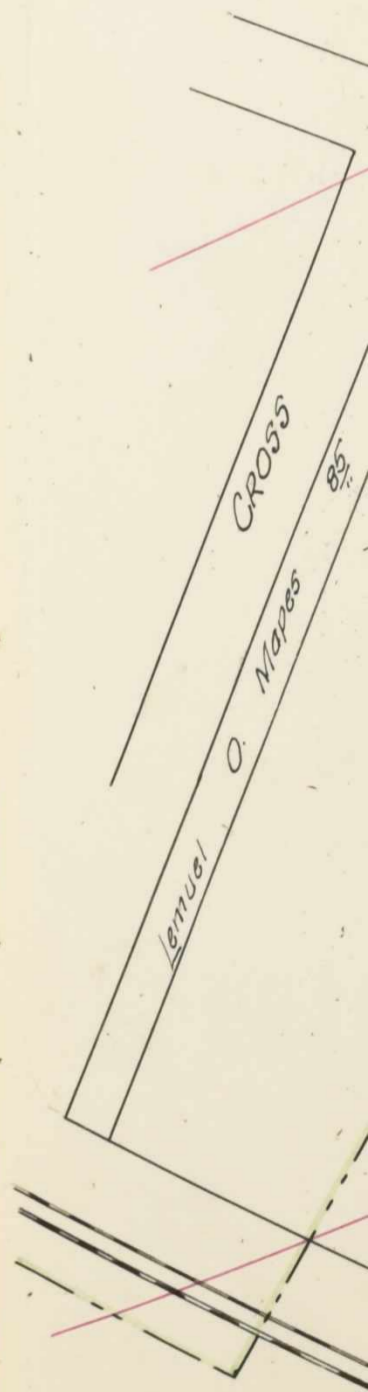
SURVEY No. 3162-10810-7388-

7751+7774-7063-8508-7759.

SCALE, 80 POLES TO AN INCH.



Plain City Sch. Dis.



SURVEY No. 5236-14437-7245-8783.

SCALE, 80 POLES TO AN INCH.



Assessment of Real Property in *Darby* Township,

IN WHOSE NAME ASSESSED	No. of Entry	No. ACRES LAND CLASSIFIED						TOTAL ACRES		Value per Acre Excluding Buildings		VALUE OF ALL BUILDINGS					Total Value Land and Buildings	Changed by County Board of Equalization	
		Arable and Plow Land		Meadow and Pasture Land		Uncultivated and Wood Land		Dollars	Cts.	Dollars	Dollars	Dollars	Dollars	Dollars	Dollars	Add		Deduct	
		Acres	H.	Acres	H.	Acres	H.												
Adams Albert	5139	8		30		19		57		40		2280	800	150	3280				
Adams E. G.	3484	34	25			40		74	25	38		2520			2820				
Adams John D.	3682	11	50	15				26	50	40		1060	150	100	1310				
Same	3881	34		24		35	50	73	50	38		3555			3555				
Adams John W.	"	14		18		14	50	46	50	40		1860			1860				
Same	3682	26	50					26	50	40		1060			1060				
Allen Miranda E.	5139	1						1		25		25			25				
Annine Mrs. D & Alice E.	3482	10				17	28	27	28	45		1225			1225				
Same	3682					7		7		40		280			280				
Andrew E & J. Smith	3482			26	50			26	50	45		1190			1190				
Same	2671	62		60		10	34	132	36	50		8425	1000	100	9725				
Andrew Frank E.	6973			17				17		75		1275			1275				
Same	12240	20		21	20			41	20	75		3075			3075				
Same	8176			18	20			18	20	75		1350	700	300	2350				
Same	8167	6	10			5		11	10	75		825			825				
Same	10793	19	50			19		38	90	70		2730			2730				

Total Value as Equalized by County Board	Deduct Value Roads	Balance	Changed by State Board		Total Dup. Value as Equalized	Plat Page	TRANSFERRED TO	DATE TRANSFERRED	DUP. OF WHAT YEAR					REMARKS			
			Added	Deduct					'09	'10	'11	'12	'13				
															Dollars	Acres	Dollars
3280	150	3200	1310	4510	4	✓											
2820		2765	1171	8940	12	✓											
1310		1290	580	1880	8	✓											
3555		3534	1514	5050	8	✓											
1860		1810	770	2680	8	✓											
1060		1020	480	1450	8	✓											
25		22	8	30	4	✓											
1225		1192	504	1700	7	✓											
280		267	113	380	8	✓											
1190		1181	501	1690	7	✓											
9725	100	7639	9201	10840	6	✓											
1275		1275	545	1820	11	✓											
3075		3050	1300	4850	11	✓											
2350		2295	915	3210	11	✓											
825		825	355	1180	11	✓											
2730		2730	1170	3900	11	✓											

connected to 2/23/11
reduce 700 reference
Jessie School Dist.
5% of County
Dec. 200 on same
36% State

4927 1/2 of same Sch. Dist.

65005 (pl 3 73378 581643 161009 85248 6050 1950 93148

25 1/2 1576 1993 38947 182940

IN WHOSE NAME ASSESSED	No. of Entry	No. ACRES LAND CLASSIFIED						TOTAL ACRES		Value per Acre Excluding Buildings		VALUE OF ALL BUILDINGS				Total Value Lands and Buildings		Changed by County Board of Equalization			
		Arable and Plow Land		Meadow and Pasture Land		Uncultivated and Wood Land		Acres	H.	Dolls.	Cts.	Dollars	Dollars	Dollars	Dollars	Dollars	Add	Deduct			
		Acres	H.	Acres	H.	Acres	H.														
Galloway James Byron	2879	62	60	45			167	40	6680	200				6880							
Hace J. George	2675	22	25	20			42	25	44	1690				1690							
Graham John & Son	4998	35	64	30	10		109	50	90	4380	200		150	4730							
Grenbaum Jacob	5139	28	35				28	35	40	1130	800		200	2130							
Grenbaum John	"	7	93	15	3		25	93	45	1170				1170							
Same	4903	40	30	25	5		70	25	45	3160	600			3760							
Same	5008	13	08	20			33	08	45	1485				1485							
Grenbaum John Jacob	5005	35	35	10			80	30	30	2400				2400							
Same	"		28	75			28	75	25	720				720							
Grenbaum L. Pr.	5139	28	60	25			51	60	42	2165				2165							
Grenbaum Louis Pr.	"	25	25				50	42	42	2100	200		200	2500							
King Marshall P.	3162	53	09		50		103	09	65	6895				6895							
Glendonfer Gottlieb	3687	65	15	8			88	40	80	3520	350		150	4020							
Hall Heman	8783			75			75	80	60	1500	1560			1560							
Harris Warren	3682	11	50	11			22	50	40	900				900							
Same	3881	27	8	75	17		52	75	40	2110				2110							
Hawn Joseph M. Jr.	2687	75	15	9	50		99	50	42	4150	400		200	4750							
Heath Edmond & Minnie M.	3162	40	20				60	65	60	3900			150	4050							
Heath Sarah E.	5111		2	25			2	25	60	135	125			260							
Hilbert Michael	5139	91			9		100	35	35	3500	500		150	4150							
Holycross Forest F.	2671	2	3				5	50	50	250				250							
Same	"	3	75	3			6	75	50	335				335							
Hon M. Walter	7245	2	25				2	25	80	180				180							
Hubman Andrew	5139	25	24	10	90		59	90	30	1800				1800							
Same	5005	19	15	5			39	25	25	975				975							
Hubman Zacharias	7245	30	29	25			59	25	72	4265	400		150	4815							
Hunt Filmore	10793	29	50	30			59	50	75	4460	600		100	5060							
Habnie Frederike	5124	15	25				15	25	50	760	100			860							
Kasper Philip	3881	15	15	6	50		36	50	35	1275				1275							
Keyes Albert	3162	22	81	27			49	81	62	3050	200		100	3350							
Same	5111	13	50				13	50	62	835				835							
Keyes Jessie	3162	2	1	60			2	60	60	210				210							
Albany Arthur E.	2671	3	50				3	50	50	175	700			875							
Hilbury John	3162	32	30	8	75		70	75	65	4595	100			4695							
										873365	74	10192	65	1640	11	607	75	245	5	475	305083800

Total Value as Equalized by County Board	Deduct Value Roads	Balance	Changed by State Board	Total Dup. Value as Equalized	Plat Page	TRANSFERRED TO	DATE TRANSFERRED	DUP. OF WHAT YEAR					REMARKS								
								'09	'10	'11	'12	'13									
								Page	Page	Page	Page	Page									
13/70	6810	2900	457833	9710	5																
3/24	1666	714		2380	2																
	4750	2000		6730	2																
	2130	860		2980	4																
3/8	17	1153	497	1650	4																
7/4	33	3727	1683	5410	4																
1/4	11	1474	636	2110	4																
1/2	15	2325	995	3380	7																
1/4	9	714	806	1020	7																
2/5	16	2149	921	3070	4																
3/4	30	2440	1020	3490	4																
3/4	48	6647	2843	9490	12																
1/8	45	3975	165	5640	7																
1/10	8	1552	568	2120	11																
3/5	24	876	371	1250	8																
		2110	900	3010	8																
1/4	72	4708	1482	6690	7																
3/5	59	4011	1719	5730	12																
1/5	12	248	92	340	11																
		4150	1740	5890	4																
		250	90	340	6																
		335	145	480	6																
		180	80	260	13																
		1800	770	2570	4																
		975	415	1390	7																
1/3	96	4719	1881	6700	5																
2 1/2	180	4972	2088	7030	11																
1/4	12	848	362	1210	6																
1/3	12	1263	547	1810	8																
1	62	3318	1402	4720	12																
3/4	45	790	340	1130	11																
		210	90	300	12																
1/2	25	850	320	1170	6																
1	65	4830	1440	6570	12																
18 1/2	975	82825	34945	11770																	

sent to Jerome John Diet

to R.M. Brown

E. J. Hunt

J. B. Pugh

IN WHOSE NAME ASSESSED	No. of Entry	No. ACRES LAND CLASSIFIED						TOTAL ACRES		Value per Acre Excluding Buildings		VALUE OF ALL BUILDINGS				Total Value Lands and Buildings	Changed by County Board of Equalization	Total Value as Equalized by County Board	Deduct Value Roads	Balance	Changed by State Board	Total Dup. Value as Equalized	Page	TRANSFERRED TO	DATE TRANSFERRED	DUP. OF WHAT YEAR					REMARKS	
		Arable and Plow Land		Meadow and Pasture Land		Uncultivated and Wood Land		Acres	H.	Dollars	Cts.	Dollars	Dollars	Dollars	Mills											Barns and other Build'gs	'09	'10	'11	'12		'13
		Acres	H.	Acres	H.	Acres	H.	Acres	H.	Dollars	Cts.	Dollars	Dollars	Dollars	Dollars	Dollars	Dollars	Add	Deduct	Dollars	Dollars	Dollars	Dollars	Page	Page	Page	Page	Page				
Kilbury Mary L.	1783	23		4	25	27	29	78		2125	200			200	2525			1/4	20	2505	1045	3550	11	✓								
Same	1786	11		11		4	26	78		2025				2025						2025	875	2900	10	✓								
Kilbury Melva	5139		6				6	25		150	200			350				1/5	5	345	185	480	4	✓								
Kilbury Millard F.	3162	52		52		50	40	65		10075	800			100	10975			3/5	39	10884	4604	15490	12	✓								
Kleiber Fredericks	2879	48		40	25		88	25		40	3530	300		150	3980			1/2	60	3920	1660	5580	5	✓								
Kleiber John S.	"	30		30		21	81	55		4455	400			150	5005			2/4	123	4882	2058	6940	5	✓								
Kleiber John & George	"			15	50	15	50	40		620					620			2/5	27	593	247	840	5	✓								
Same	3312	91	14			10	101	16		5555	600			300	6455			2/4	123	6332	2638	5940	5	✓								
(see below)																																
Lovry Frank & Rizzie	3312	4		10	10		14	10		25	350			350				3/4	18	332	148	480	5									
Mabine Chae Amanda	7245	11	25				11	25		75	8720			200	8920					8920	3810	12730	5	✓								
M ^{rs} Dorell Alva	2879	43	65	50		30	123	65		50	6175	200			6375			2	100	6275	2675	8950	5	✓	Mr. B. B. B. B. B.	4/11			75			
M ^{rs} Dorell Mary J.	"			60			60			40	2400				2400			1	40	2360	1010	3370	5	✓								
Marshall Mary E.	12240	65		20			85	75		6375	150			6525						6525	2175	9300	11	✓	J. M. Dorell	3/11				75		
Same	12877	44	15			20	64	15		70	4450				4450			15	122	4354	1872	6230	11	✓	J. M. Dorell	3/11				75		
Martin James H.	3312			22	60		22	60		50	1125				1125			1	50	1075	465	1540	5	✓								
Martin Joseph P.	5124	82		38		30	150	65		9750	600			200	10550			2	130	10420	440	14840	10	✓								
Mayer George	10793	28		20		3	30	51	80	75	3860	400			4260			2/5	50	4610	1960	6570	11	✓								
Same	12269	15					15			75	1125				1125					1125	475	1600	11	✓								
Same	12240	15					15			75	1125				1125					1125	475	1600	11	✓								
Mayer Mary	12269	15		15			30	75		2250					2250			1/3	25	2225	455	3180	11	✓								
Same	10793	15		12			27	75		2025					2025			1/3	25	2000	860	2860	11	✓								
Miller Lafayette	7751	64	60			10	74	60		70	5215			350	5565			1	70	5495	2335	7830	12	✓								
Mitchell Fena E.	5124	100		41		74	50	155	50	65	10105	1500		200	11505			1/4	113	11692	4898	16590	6	✓	592 to J. M. Robinson Jr.	7/11				75		
Mitchell David	"	12	50			30	42	50		65	2760	150		100	3010			3/4	48	2962	1258	4220	6	✓								
Same	7245	28		20			48			65	3120				3120					3120	1840	4460	5	✓								
Moders Conrad	5008	55		42		20	25	117	25	40	4690	300		300	5290			2/4	90	5200	2200	7400	4	✓								
Same	9003	3	25				3	25		40	130				130			1/4	10	120	60	180	4	✓								
Moders George	5137	53		40		20	113	45		5085	300			200	5585			3/4	33	5552	2348	7900	3	✓								
Knock Mary F.	2671	27		30		25	25	82	25	35	2880	200		150	3230					3230	1350	4580	6	✓								
Knock Mary E.	5236	2	60				2	60		60	150				150			1/8	7	143	57	200	11	✓								
Kramer E. L.	5139	14					14			35	490				490			1/4	9	481	207	690	4	✓	J. M. Robinson Jr.	4/11				87		
Kuhlman John L.	4067	65		65		30	160	44		44	6400	200		6600				1/2	60	6540	2790	9330	3	✓								
(see below)	1125	14		62	45	338	99	208	7	182	11927	6700		2500	12677			2/4	139	12737	5427	18400										

J. M. Robinson Jr.
 Andrew J. Bradfield

IN WHOSE NAME ASSESSED	No. of Entry	No. ACRES LAND CLASSIFIED						TOTAL ACRES	Value per Acre Excluding Buildings	Total Value Land Excluding Buildings	VALUE OF ALL BUILDINGS					Total Value Lands and Buildings	Changed by County Board of Equalization		Total Value as Equalized by County Board	Deduct Value Roads	Balance	Changed by State Board		Total Dup. Value as Equalized	Plat Page	TRANSFERRED TO	DATE TRANSFERRED	DUP. OF WHAT YEAR					REMARKS	
		Arable and Plow Land		Meadow and Pasture Land		Uncultivated and Wood Land					House	House	Mills	Barns and other Build'gs	Add		Deduct	Add				Deduct	'09					'10	'11	'12	'13			
		Acres	H.	Acres	H.	Acres	H.				Dollars	Cts.	Dollars	Dollars	Dollars		Dollars	Dollars				Dollars	Dollars					Acres	Dollars	Dollars	Dollars	Dollars		Page
Burger Geo. C.	7916	24	15	10	40	49	40	3460	250			200	3910					3/4	52	3858	1622	5480	9	✓										
Burns John B.	5743	16	27	92		43	92	2890	300			150	3090					1/4	75	3015	1265	4280	9	✓										
Same	6233	12	12	10		34	70	2380					2380					1/4	18	2392	1008	3370	9	✓										
Same	7916	62	50	50		112	50	8435	250			250	8685					3/4	54	8881	3764	12650	9	✓										
Same	6602	22	20	75	50	117	50	8810	600			150	9410					1	75	9485	4005	13490	9	✓										
Same	12169	30	29			59	75	4425					4425					1/2	37	4388	1482	6270	9	✓										
Same	"	14	88	14		28	88	2155					2155							2155	915	3070	9	✓										
Same	7399	12	25			12	25	920					920							920	400	1320	9	✓										
Same	12927	10	10			20	75	1500					1500							1500	680	2180	9	✓										
Same	7397	40	35			75	75	5625					5625					1/2	38	5587	2893	7980	9	✓										
Same	4982	5				5	75	375	1500			500	2375					1/2	38	2337	873	3210	9	✓										
Dellinger Elizabeth C.	5743	23				23	70	1610	200				1810					3/5	42	1768	742	2510	9	✓										
Same	6233		17			17	60	1020					1020							1020	430	1450	9	✓										
Dellinger John B.	7916	42	40	8	72	90	72	6800	500			125	7425					3/4	55	7370	3120	10490	9	✓										
Hauke Albert.	5743	16				16	65	1040	500			100	1640					1	65	1475	645	2220	9	✓										
Same	6233	21		3		24	70	1680					1680							1680	710	2390	9	✓										
Holycross L. H.	7393	35		10		45	75	3375	1400			1200	5575					1	75	5500	2200	7700	10	✓										
Same	"	19	88			19	88	1480					1480					1/4	19	1461	624	2090	10	✓										
Same	8862	95	30	30		155	75	11625					11625							11625	4975	16600	10	✓										
Mabloud Melissa J.	7916	100				100	75	7500				100	7600					1/2	112	7488	3202	10690	9	✓										
Same	6602			31	25	31	25	2185					2185					1/2	105	2080	900	2980	9	✓										
Moss Ray G.	4982	50				50	70	3500	150				3650					3/4	52	3598	1632	5130	9	✓										
Miel Conrad Jr.	5743	36	50			36	80	2645	600			100	3345					1/8	81	3264	1846	4610	9	✓										
Miel John George.	12270	28	50	15		43	50	3260	1200			165	4585					1/2	37	4548	1862	6410	10	✓										
		715	81	300	42	193	87	1209	60	1727			38445	7050				142	1030	97465	41055	138220												

J. S. Burns. 81

Darby

IN WHOSE NAME ASSESSED	No. of Entry	No. ACRES LAND CLASSIFIED						TOTAL ACRES		Value per Acre Excluding Buildings	Total Value Land Excluding Buildings	VALUE OF ALL BUILDINGS					Total Value Lands and Buildings	Changed by County Board of Equalization		Total Value as Equalized by County Board	Deduct Value Roads	Balance	Changed by State Board			Total Dup. Value as Equalized	Plat Page	TRANSFERRED TO	DATE TRANSFERRED	DUP. OF WHAT YEAR					REMARKS					
		Arable and Plow Land		Meadow and Pasture Land		Uncultivated and Wood Land		House	House			Mills	Barns and other Build'gs	Add	Deduct	Dollars		Acres	Dolls.				Dollars	Added	Deduct					Dollars	Page	Page	Page	Page		Page				
		Acres	H.	Acres	H.	Acres	H.																														Acres	H.	Dolls.	Cts.
<i>King Marshall P.</i>	<i>7751 re.</i>					<i>21</i>		<i>21</i>		<i>65</i>	<i>1365</i>					<i>1365</i>																								
<i>do Same</i>	<i>2164</i>	<i>37</i>						<i>27</i>		<i>70</i>	<i>2590</i>	<i>1000</i>			<i>150</i>	<i>3740</i>																								
	<i>37</i>					<i>21</i>		<i>58</i>		<i>135</i>	<i>3953</i>	<i>1000</i>			<i>150</i>	<i>5105</i>																								
<i>R.R. St. L.R.R. Co.</i>																																								

IN WHOSE NAME ASSESSED	No. of Entry	No. ACRES LAND CLASSIFIED						TOTAL ACRES		Value per Acre Excluding Buildings		VALUE OF ALL BUILDINGS					Total Value Lands and Buildings		Changed by County Board of Equalization		Total Value as Equalized by County Board	Deduct Value Roads	Balance	36% Changed by State Board + 5% County Board	Total Dup. Value as Equalized	Plat Page	TRANSFERRED TO	DATE TRANSFERRED	DUP. OF WHAT YEAR					REMARKS							
		Arable and Plow Land		Meadow and Pasture Land		Uncultivated and Wood Land		Dollars	Cts.	Dollars	House	House	Mills	Barns and other Build'gs	Dollars	Adit	Deduct	Dollars	Acres	Dollars									Dollars	Added	Deduct	Dollars	'09		'10	'11	'12	'13			
		Acres	H.	Acres	H.	Acres	H.																																Acres	H.	Dollars
Darby Township	1	650	85	613	73	378	581	443	16	1009	357	48	4050	1950	93148	254	1155	91993	38947	180940																					
"	2	623	08	462	77	190	80	1294	65	1571	472	60	4700	150	1775	73905	194	952	72953	31017	103970																				
"	3	641	19	405	62	231	85	1278	82	1439	58	690	4400	300	2075	62865	196	527	64838	27362	92200																				
"	4	873	34	574	10	192	85	1640	11	607	752	75	5475		3050	83800	184	975	52825	34415	117770																				
"	5	1123	16	624	95	338	99	2087	10	1821	119	270	6700		2800	128720	26	1337	127373	54987	181400																				
"	6	798	12	648	17	289	46	1735	69	1534	75	415	5400		1900	82725	216	535	81760	84530	116290																				
"	7	1258	11	613	35	326	18	2197	84	1838	104	475	6400		3050	118925	283	449	117424	49764	167180																				
"	8	995	21	694	44	282	2136	49	1833	94	930	6600	800		2525	104855	254	1130	103725	48775	147500																				
"	9	741	04	712	51	524	83	1950	10	1823	59	820	8100	1200	1700	110320	343	469	105867	45964	154620																				
"	10	564	70	306	82	149	22	1620	74	1155	52	283	2550	150	1850	46335	217	1087	55248	23442	78690																				
total for Darby Township		8298	80	5848	223	3069	48	17016	50	4633	6370	88	56575	2600	22175	916438	2447	11631	906807	383753	1290560																				
Chuckery school district	11	715	31	300	42	193	87	1209	60	1727	65	445	7050		3000	98495	142	1030	97465	41055	138520																				
"	12	587	49	185	44	105	81	878	74	1445	64	590	2100	150	1275	65115	82	614	67501	28619	96120																				
total for chuckery		1302	80	485	86	298	68	2088	34	3222	152	303	9150	150	4275	166610	23	1644	164966	69674	234640																				
Plain City District	13	37		21		58		135		3955	1000	150			150	5705	13	93	5012	2068	7080																				
Killcreek district	14	171	55	115	45	57	25	344	25	258	125	60	1600		300	14460	13	56	14404	6066	20470																				
total for Darby Township		8298	80	5848	223	3069	48	17016	50	4633	6370	88	56575	2600	22175	916438	2447	11631	906807	383753	1290560																				
total for chuckery District		1302	80	485	86	298	68	2088	34	3222	152	303	9150	150	4275	166610	23	1644	164966	69674	234640																				
total Plain City District		37		21		58		135		3955	1000	150			150	5705	13	93	5012	2068	7080																				
total Killcreek District		171	55	115	45	57	25	344	25	258	125	60	1600		300	14460	13	56	14404	6066	20470																				
total of all		9310	15	6249	93	3447	41	19507	89	8486	10066	38	6325	2750	26900	1104613	2646	13424	1091189	461361	1552750																				

Almaga 56.13 sq. Bsp.
 " 56.15 Mal. "

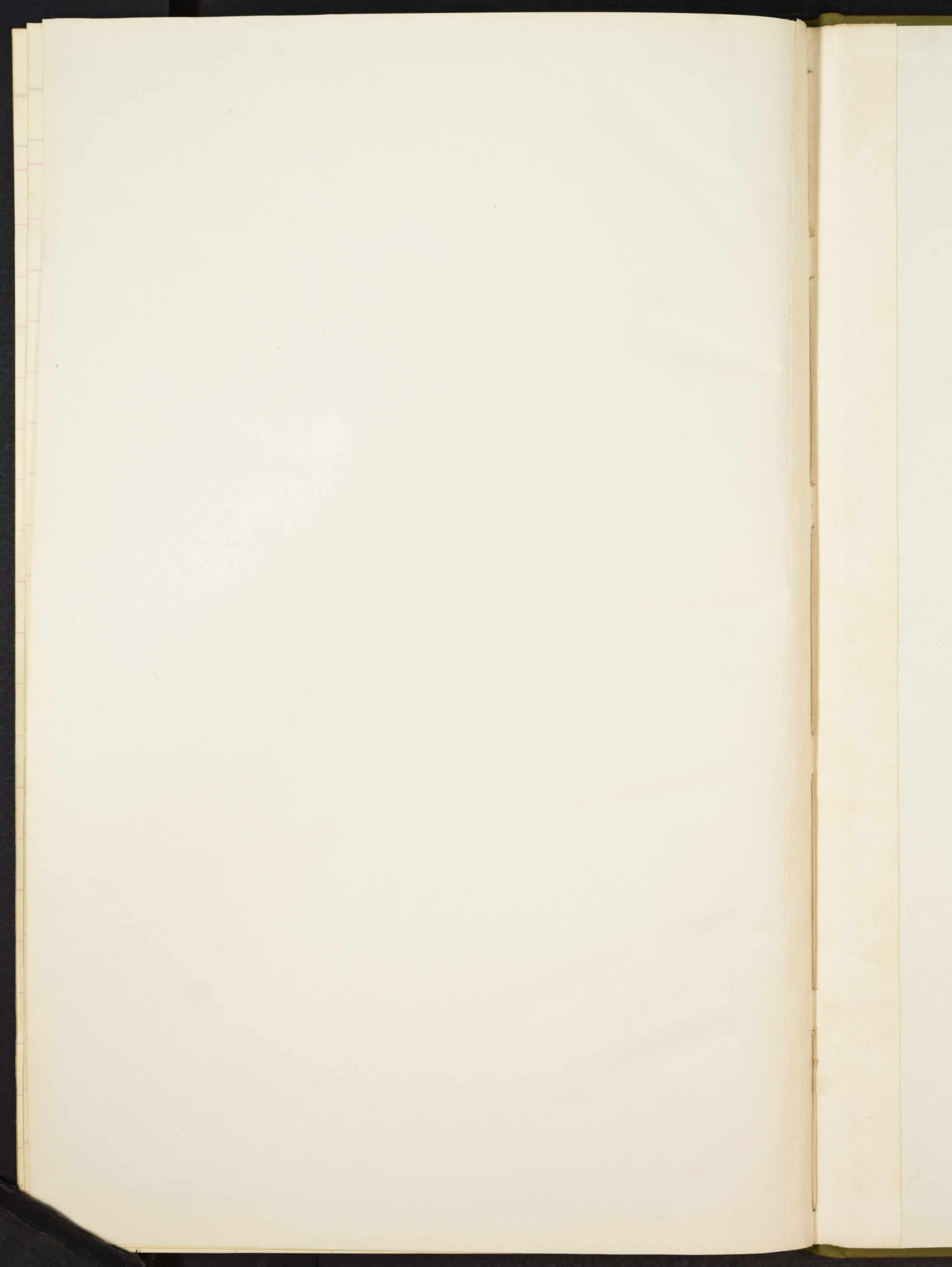
Assessment of Real Property in

Township,

Union County, Ohio, for the Year 1910.

W. H. STARBUCK & CO., CHICAGO, ILL.

IN WHOSE NAME ASSESSED	No. of Entry	No. ACRES LAND CLASSIFIED						TOTAL ACRES		Value per Acre Excluding Buildings		VALUE OF ALL BUILDINGS				Total Value Lands and Buildings	Changed by County Board of Equalization		Total Value as Equalized by County Board	Deduct Value Roads	Balance	Changed by State Board		Total Dup. Value as Equalized	Plat Page	TRANSFERRED TO	DATE TRANSFERRED	DUP. OF WHAT YEAR					REMARKS
		Arable and Plow Land		Meadow and Pasture Land		Uncultivated and Wood Land		Dollars	Cts.	Dollars	Dollars	Dollars	Dollars	Dollars	Add	Deduct	'09	'10				'11	'12					'13					
		Acres	H.	Acres	H.	Acres	H.	Acres	H.	Dollars	Cts.	Dollars	Dollars	Dollars	Dollars	Dollars	Add	Deduct				Dollars	Page					Page	Page	Page	Page		
<i>Darby Township</i>																																	



**DARBY TP.
UNION COUNTY
1910**