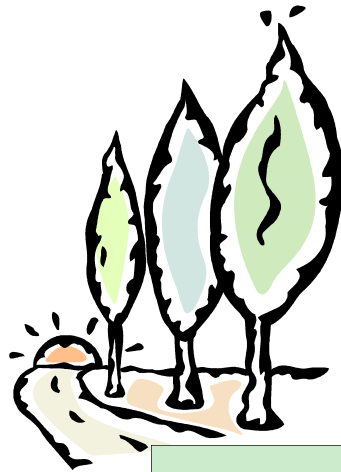


DRIVEWAY & PIPE STANDARDS

INSTALLING A
DRIVEWAY, DRIVEWAY
PIPE, OR ROADSIDE
PIPE?



ALL INSTALLATIONS
SHALL BE DONE IN
ACCORDANCE WITH
THESE STANDARD
SPECIFICATIONS
AND DRAWINGS

general design

DRIVE WIDTHS & RADII

minimum residential drive width is ten (10) feet [special drives, such as common access drives or multi-family drives may be wider, but should not exceed twenty four (24) feet; field drives may be wider than 24' to accommodate equipment]

min radius for each approach (adjacent to the road) **is twenty (20) feet**

DRIVEWAY MATERIAL (MINIMUMS)

field Drive—6" crushed aggregate base

residential drive—2" asphalt over 6" crushed aggregate base, or 8" crushed aggregate base, or 6" concrete (reinforcing recommended)

commercial, industrial, or multi-family drive—design shall be based on specific use requirements

common access drive—see CAD regulations

CONCRETE DRIVES

concrete drives on **uncurbed** county and township roads shall be terminated four (4) feet from the edge of pavement

the area between the drive and the pavement shall be filled with either 2" asphalt over 6" crushed aggregate base or 8" of crushed aggregate base

concrete drives on **uncurbed** township roads, in residential subdivisions with posted speed limits of 25 mph, shall be terminated as described above **or** can be brought to the edge of pavement **if the concrete drive is "held down" 1/4" lower than the road pavement**

INTERSECTION ANGLE

drives should intersect the road at an angle between 70° and 90° ; 90° is preferable

PROFILE

drives on **uncurbed** roads shall slope down and away from the edge of pavement for a minimum distance of four (4) feet

beyond four (4) feet the driveway may slope up or down, but at a slope no greater than ten percent (10%)

LOCATION ALONG PUBLIC ROADS

sight distance due to vertical or horizontal curves shall be no less than 495'

driveway spacing from other driveways or roads: local—250'

minor collector—360'

major collector—495'

(may be greater for commercial, industrial or multi-family drives)

VARIANCES

a variance may be granted for extreme situations where these standards can not be met

general design



CR 164

working to keep
your roads safe

UNION COUNTY ENGINEER

233 West Sixth Street
Marysville, Ohio 43040

937.645.3018

800.258.8278 inside Union Co. only

engineer@unioncountyohio.gov

Hours

730A—430P

Monday—Friday



INSTALLATION STANDARDS

PIPES—DRIVEWAY

pipe size (diameter) will be determined by county engineer staff

minimum diameter for residential & field drives is 10" (minimum diameter for all other drives is 12")

minimum pipe length is 30'

ALLOWABLE PIPE MATERIAL—DRIVEWAY

reinforced concrete pipe (RCP)

smooth wall high density polyethylene pipe (HDPE)

corrugated metal pipe (CMP)

COVER—DRIVEWAY

pipe must be covered by a minimum of eight (8) inches of material or as otherwise recommended by the manufacturer

PIPES—DITCH ENCLOSURE

pipe size (diameter) will be determined by county engineer staff (minimum 10")

pipe may be perforated or solid

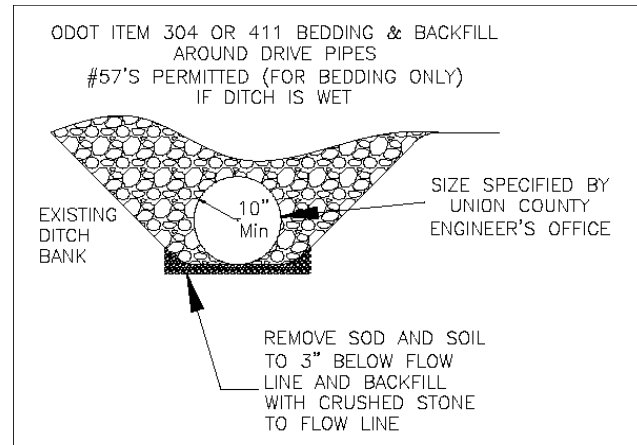
backfill may be granular material or soil

INLETS—DITCH ENCLOSURE

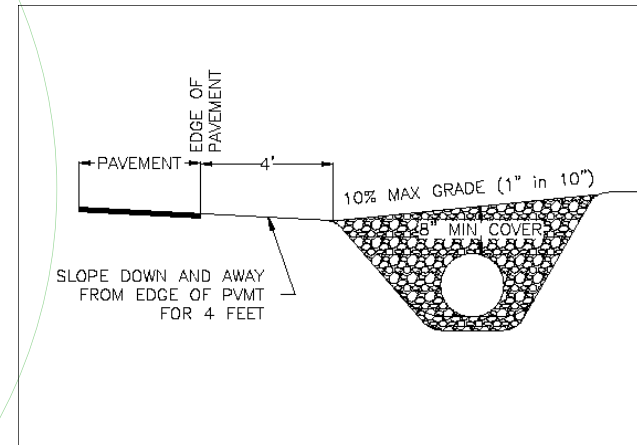
minimum 8" diameter drop inlet is required in residential subdivisions with storm sewer systems

must be installed on "high" or upstream side of driveway

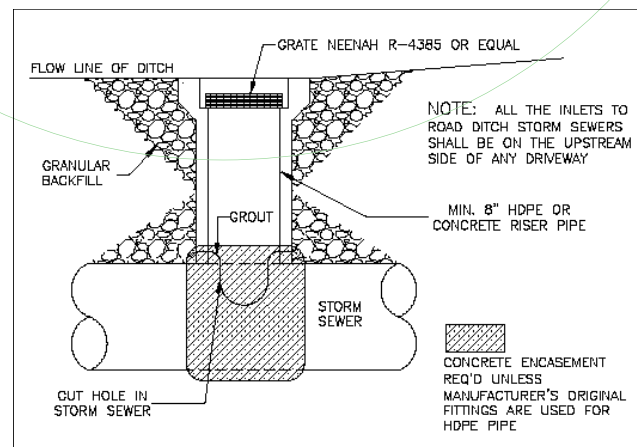
drops are also required every 200' along ditch enclosures, regardless of road type



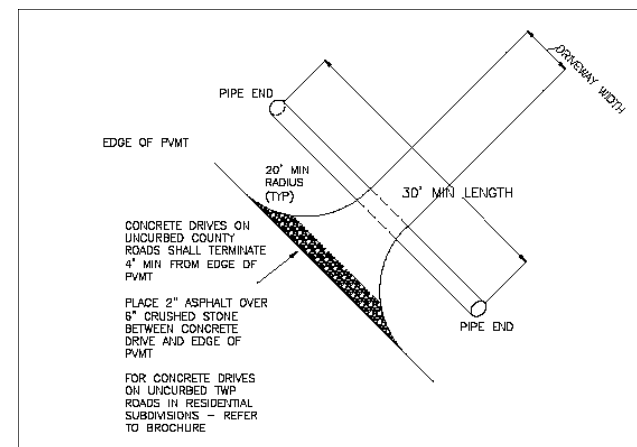
DRIVE PIPE DETAIL



DRIVEWAY PROFILE



DROP INLET DETAIL



DRIVEWAY LAYOUT

RESPONSIBILITY

when a new driveway is proposed, a property owner must fill out a driveway application, pay associated fees, and obtain a driveway permit prior to construction

property owners are responsible for purchase, installation, replacement, and repair of driveways, driveway pipe, and roadside pipe (ditch enclosure)

deficient drives or pipes shall be replaced by the owner within 30 days of notification by the county engineer

work not completed within 30 days of notification will be completed by the county engineer and the cost will be assessed to the property owner

PLEASE NOTE

these guidelines are intended for single drive use

additional standards may apply for commercial, industrial, multi-family, and common access drives